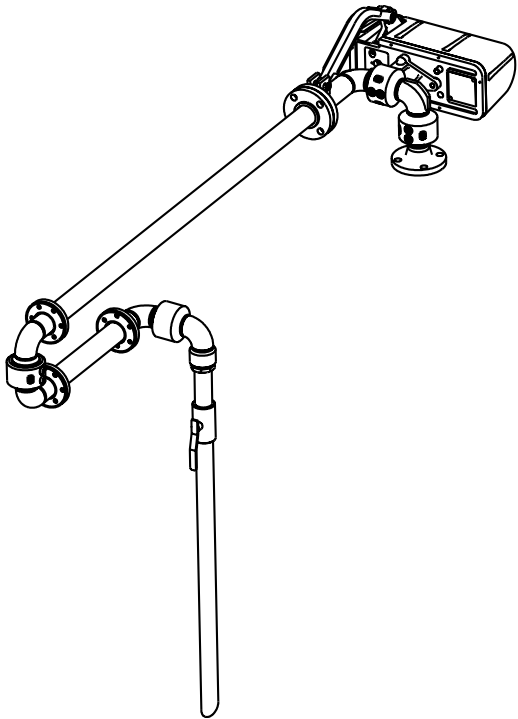
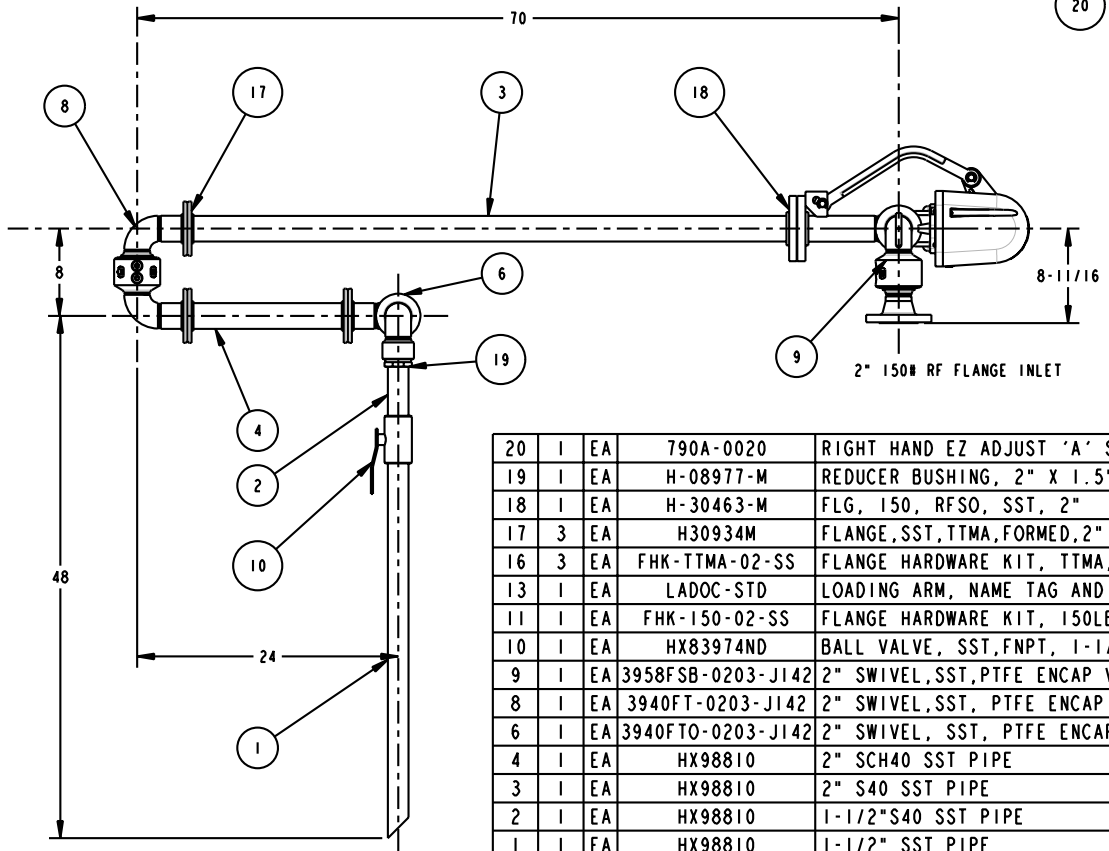
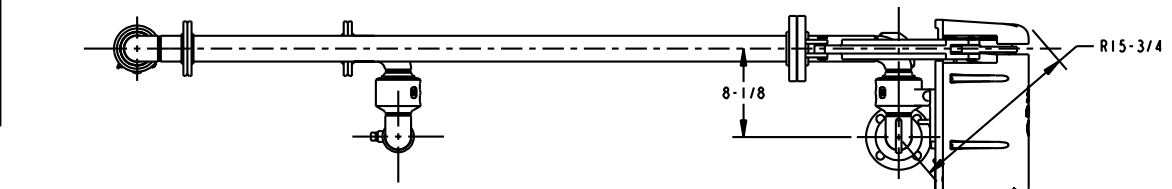


MATERIALS OF CONSTRUCTION	STAINLESS STEEL
SWIVEL JOINT SEALS	PTFE ENCAP VITON
PRODUCT	SOLVENTS AND MONOMERS
ESTIMATED WEIGHT	183 lbs.
MOMENT LOAD AT SPRING	4,980 inlbs.
MOMENT LOAD AT INLET	SAME
FLANGE GASKETS	KLINGER SIL 5400
TEST PRESSURE	90 psi
PRODUCT RETENTION	YES, UP TO THE BALL VALVE
WEIGHT BY OTHERS	NO

THIS DRAWING IS NOT TO BE SCALED. FOR ADDITIONAL INFORMATION, PLEASE CONTACT OUR ENGINEERING DEPT.

REVISIONS					
LTR	ECN #	DESCRIPTION	DRAWN	APPROVED	DATE
-	-	-	-	-	-



ITEM	QTY	UW	PART NUMBER	DESCRIPTION
20	1	EA	790A-0020	RIGHT HAND EZ ADJUST 'A' SPRING
19	1	EA	H-08977-M	REDUCER BUSHING, 2" X 1.5", SST
18	1	EA	H-30463-M	FLG, 150, RFSO, SST, 2"
17	3	EA	H30934M	FLANGE, SST, TTMA, FORMED, 2"
16	3	EA	FHK-TTMA-02-SS	FLANGE HARDWARE KIT, TTMA, SS, 2"
13	1	EA	LADOC-STD	LOADING ARM, NAME TAG AND HARDWARE
11	1	EA	FHK-150-02-SS	FLANGE HARDWARE KIT, 150LB, SS, 2"
10	1	EA	HX83974ND	BALL VALVE, SST, FNPT, 1-1/2"
9	1	EA	3958FSB-0203-J142	2" SWIVEL, SST, PTFE ENCAP VITON
8	1	EA	3940FT-0203-J142	2" SWIVEL, SST, PTFE ENCAP VITON
6	1	EA	3940FTO-0203-J142	2" SWIVEL, SST, PTFE ENCAP VITON
4	1	EA	HX98810	2" SCH40 SST PIPE
3	1	EA	HX98810	2" S40 SST PIPE
2	1	EA	HX98810	1-1/2" S40 SST PIPE
1	1	EA	HX98810	1-1/2" SST PIPE

CONFIDENTIAL THIS DOCUMENT CONTAINS INFORMATION WHICH IS PROPRIETARY TO OPW, AND SHOULD BE PROTECTED ACCORDINGLY.

SIGNATURES		MO-DA-YR	REV:	DESCRIPTION: 2" SST LOADING ARM, UFRH	
DRAWN:	SCK	08/03/10	-	PART NUMBER:	OPW Engineered Systems
CHECKED:	-	-	SIZE:	C32F-J142	A ROBTEC Resources Company
MATERIAL:	SST	WEIGHT:	D	SCALE: 0.120	Lebanon, Ohio 45036 USA
				SHEET 1 OF 2	3D GENERATED DRAWING