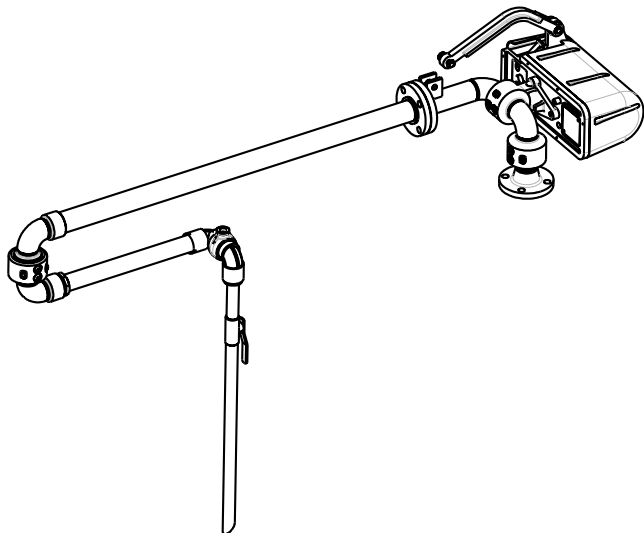
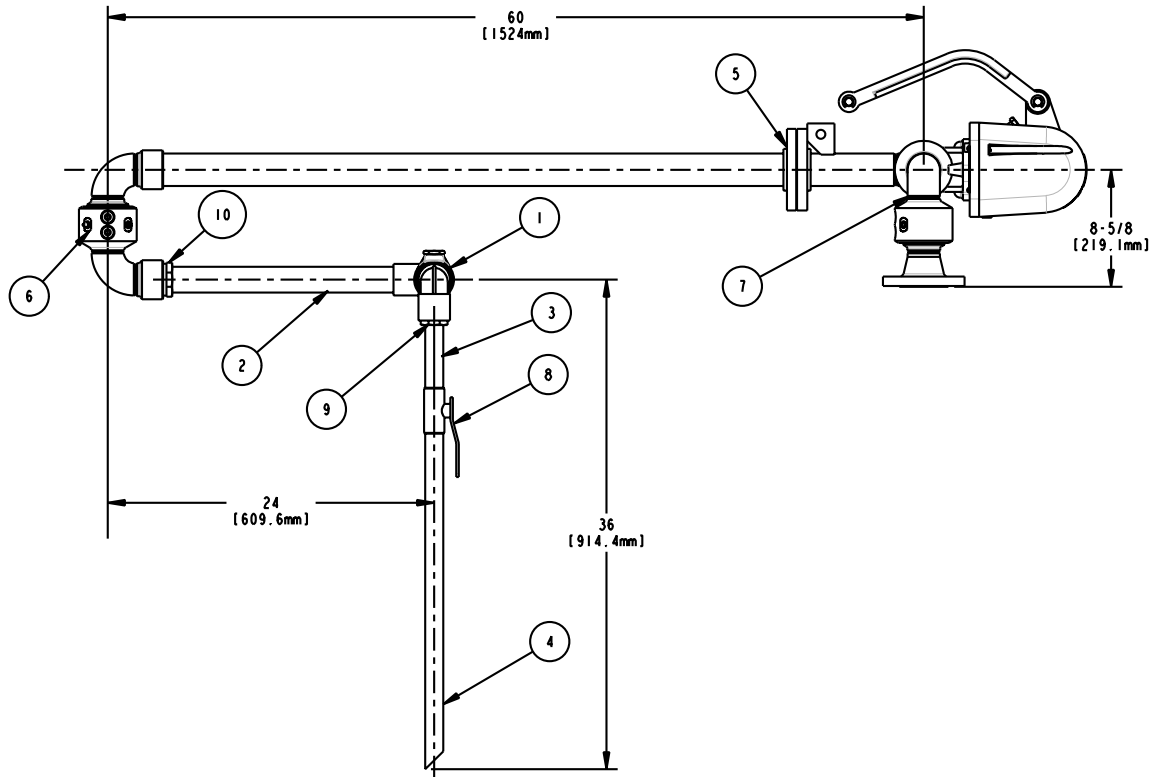
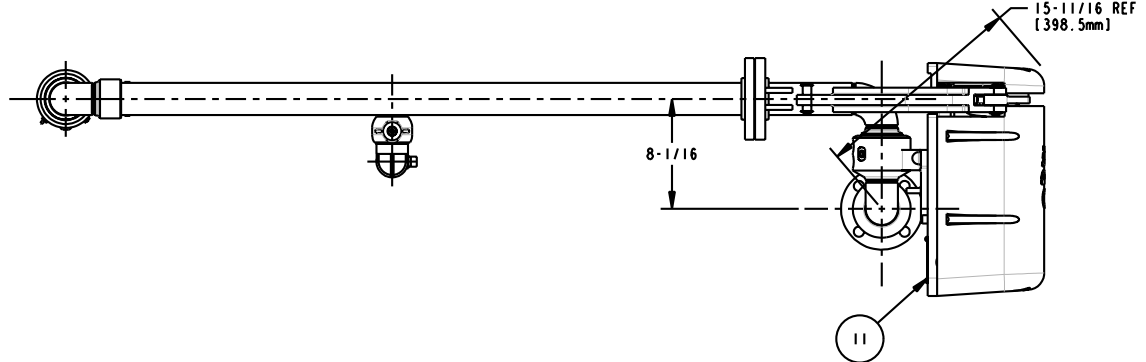


MATERIALS OF CONSTRUCTION	STAINLESS STEEL
SWIVEL JOINT SEALS	PTFE
PRODUCT	VEGETABLE OIL
ESTIMATED WEIGHT	178LBS.
MOMENT LOAD AT SPRING	3,627 IN.-LBS.
MOMENT LOAD AT INLET	SAME
FLANGE GASKETS	KLINGER SIL C5400
TEST PRESSURE	90 PSI
PRODUCT RETENTION	UP TO LOADING VALVE
WEIGHT BY OTHERS	NO

11	I	EA	790A-0020	RIGHT HAND EZ ADJUST 'A' SPRING
10	I	EA	H-08977-M	REDUCER BUSHING, 2" X 1.5", SST
9	I	EA	HX82473ND	REDUCER BUSHING, 1.5" X 1", SST
8	I	EA	HX98540	BALL VALVE, SST, 1", APOLLO 76-105-01A
7	I	EA	3958FSB	2" SST SWIVEL
6	I	EA	3940	2" SST SWIVEL
5	I		HX98537	2" PIPE SPOOL
4	I	EA	HX98537	1" SCH 40, SST, PIPE
3	I	EA	HX98537	1" PIPE NIPPLE
2	I	EA	HX98537	1-1/2", SST, PIPE
1	I	EA	3740	1-1/2" SWIVEL, SST
ITEM	QTY	UM	PART NUMBER	DESCRIPTION

THIS DRAWING IS NOT TO BE SCALED. FOR ADDITIONAL INFORMATION, PLEASE CONTACT OUR ENGINEERING DEPT.

REVISIONS					
LTR	ECN #	DESCRIPTION	DRAWN	APPROVED	DATE
-	-	-	-	-	-



CONFIDENTIAL THIS DOCUMENT CONTAINS INFORMATION WHICH IS PROPRIETARY TO OPW, AND SHOULD BE PROTECTED ACCORDINGLY.

SIGNATURES		MO-DA-YR	REV:	DESCRIPTION: 2" X 1-1/2" X 1" LOADING ARM, SST, PTFE	
DRAWN:	SCK	05/17/10	-	PART NUMBER:	
CHECKED:	-	-	-	C32F-H990	
MATERIAL:	SST	WEIGHT:	-	SCALE: 0.050 SHEET 1 OF 2	
			D	3D GENERATED DRAWING	

OPW **Engineered Systems**
A **ROBERT** Resources Company
Lebanon, Ohio 45036 USA