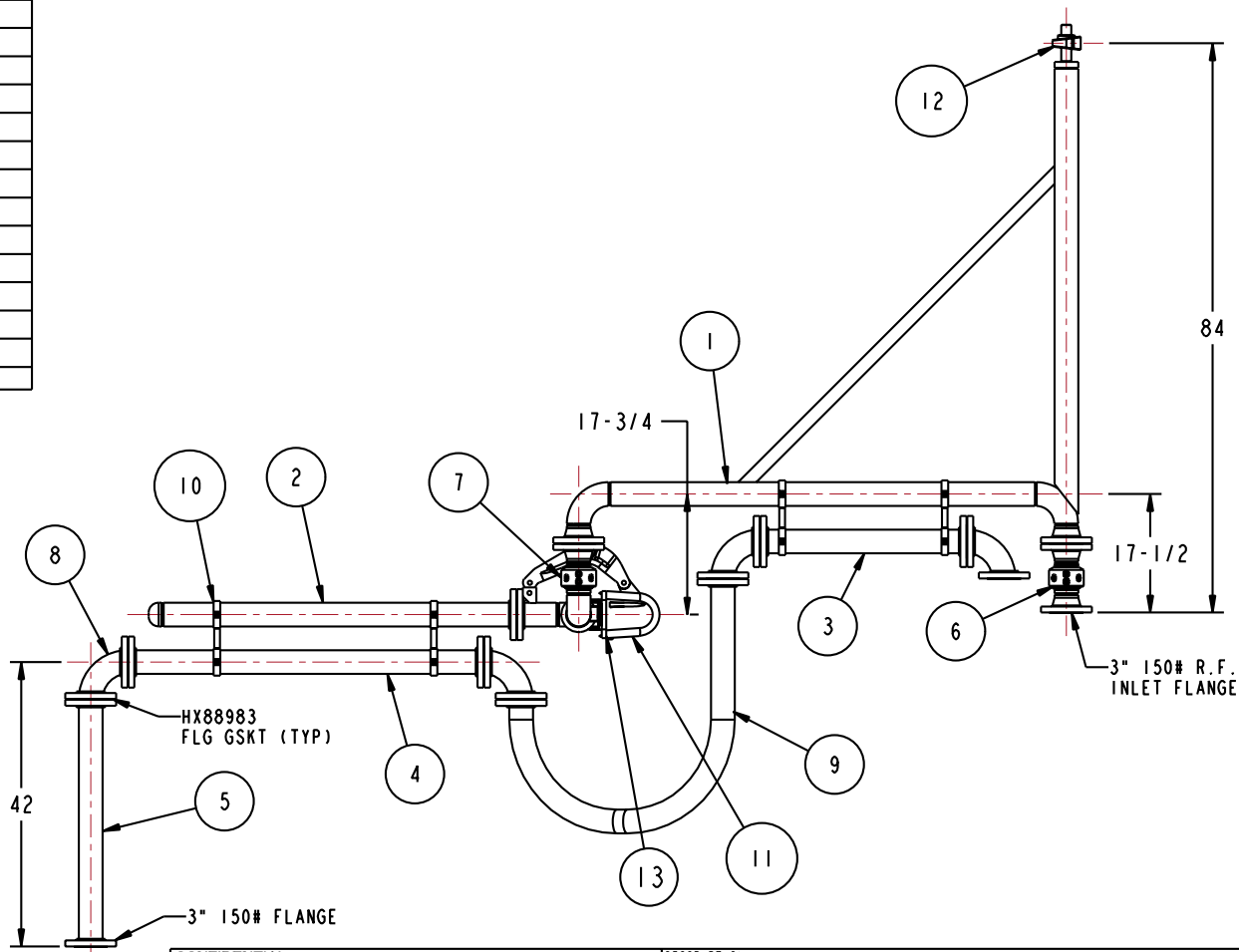
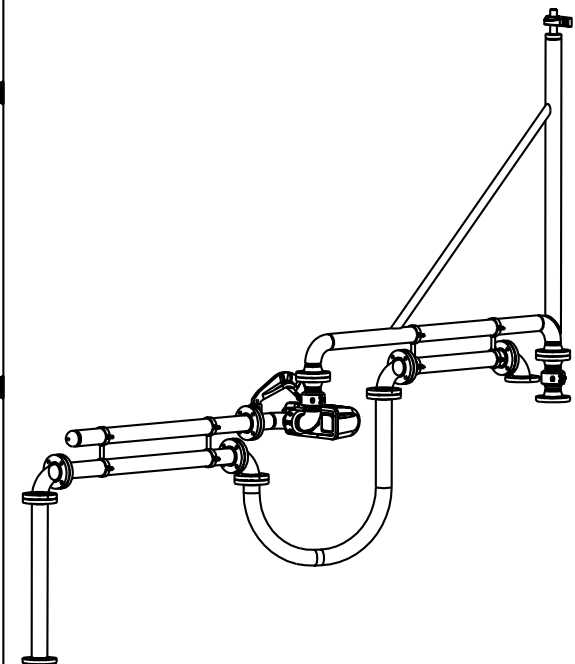
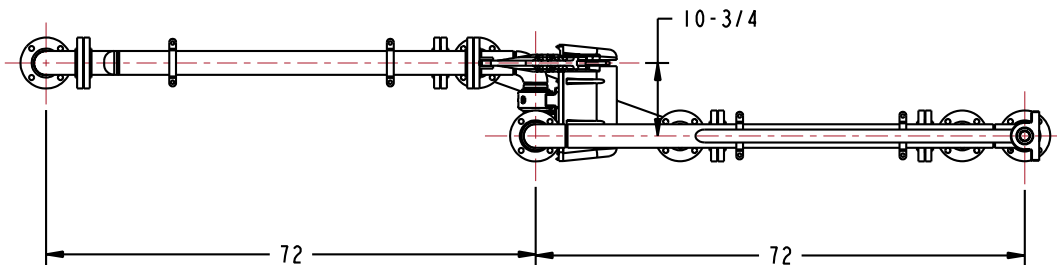


MATERIALS OF CONSTRUCTION	BY PASS ARM: CARBON STEEL WETTED PARTS: TFE LINED
SWIVEL JOINT SEALS	VITON
PRODUCT	SODIUM HUPO CHLORIDE
ESTIMATED WEIGHT	700 LBS
MOMENT LOAD AT SPRING	9700 IN-LBS
MOMENT LOAD AT INLET	<48,000 IN-LBS
FLANGE GASKETS	KLINGER SIL C5400
TEST PRESSURE	90 PSI
PRODUCT RETENTION	NO
WEIGHT BY OTHERS	NO

13	1	EA	788L-0040	LOCKDOWN UNIT
12	1	EA	H-01180-M	PILLOW BLOCK BEARING
11	1	EA	790C-0050	EZ ADJUST TORSION SPRING BALANCE
10	4	EA	N/A	3" X 3" CLAMP ASSY, CST
9	1	EA	HX97337	3" TFE LINED SST FLEXHOSE
8	4	EA	HX83061	3" TFE LINED CST ELBOW
7	1	EA	456FSD-0302	3" SWIVEL, CST
6	1	EA	3420F-0302	3" SWIVEL, CST
5	1	EA	HX97338	3" PTFE LINED SST FLEXHOSE
4	1	EA	HX97336	3" PTFE LINED PIPE SPOOL
3	1	EA	HX97335	3" PTFE LINED PIPE SPOOL
2	1	EA	N/A	3" CST PIPE SPOOL
1	1	EA	N/A	3" BOOM ASSEMBLY, CST
ITEM	QTY	UM	PART NUMBER	DESCRIPTION

THIS DRAWING IS NOT TO BE SCALED. FOR ADDITIONAL INFORMATION, PLEASE CONTACT OUR ENGINEERING DEPT.

REVISIONS					
LTR	ECN #	DESCRIPTION	DRAWN	APPROVED	DATE
-	-	-	-	-	-



CONFIDENTIAL THIS DOCUMENT CONTAINS INFORMATION WHICH IS PROPRIETARY TO OPW, AND SHOULD BE PROTECTED ACCORDINGLY.

DESCRIPTION: 3" BY PASS LOADING ARM

SIGNATURES	MO-DA-YR
DRAWN: BJB	3/12/09
CHECKED:	-
MATERIAL:	WEIGHT:

REV:	-
PART NUMBER:	B33F-H241
SCALE:	0.075
SHEET	1 OF 3

OPW **Engineered Systems**
A **ROBERT** Resources Company
Lebanon, Ohio 45036 USA
3D GENERATED DRAWING