

A

B

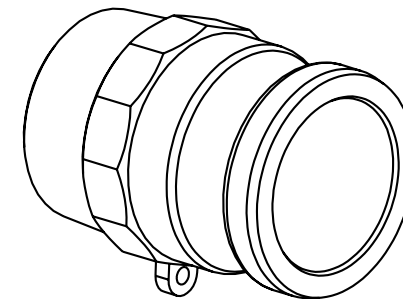
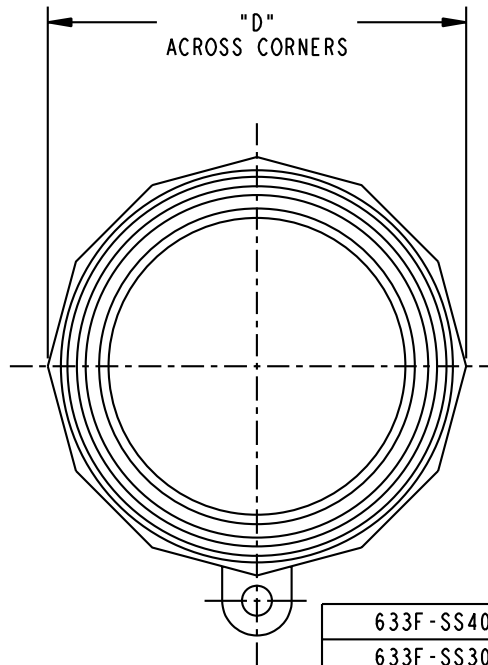
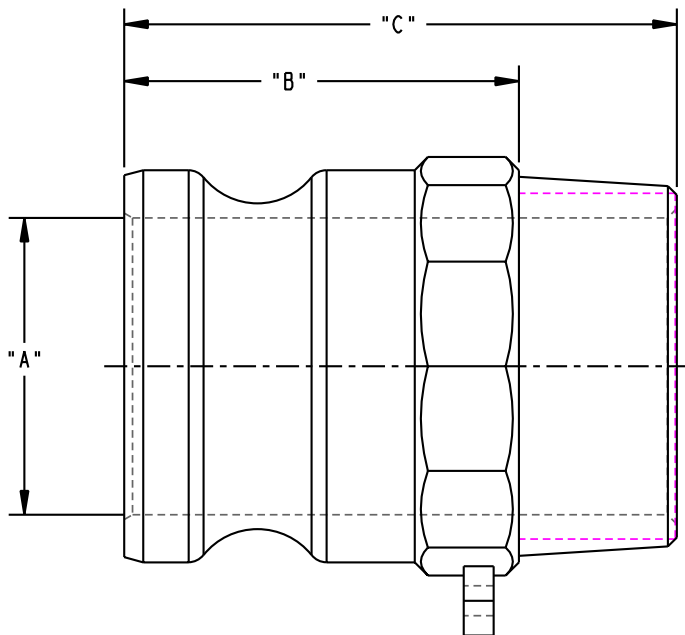
C

D

THIS DRAWING IS NOT TO BE SCALED. FOR ADDITIONAL INFORMATION, PLEASE CONTACT OUR ENGINEERING DEPT.

REVISIONS

LTR	ECN #	DESCRIPTION	DRAWN	APPROVED	DATE
REL	-		JPR	NAC	06-11-01



633F-SS40	4.00-8 NPT	3.81	3.19	4.69	5.50	7.2#
633F-SS30	3.00-8 NPT	2.88	2.78	4.16	4.34	4.2#
633F-SS25	2.50-8 NPT	2.19	2.75	4.06	3.45	2.8#
633F-SS20	2.00-11.5 NPT	1.88	2.50	3.50	2.78	1.7#
633F-SS15	1.50-11.5 NPT	1.44	2.12	3.19	2.38	1.3#
633F-SS12	1.12-11.5 NPT	1.12	2.12	3.06	2.04	1.0#
633F-SS10	1.00-11.5 NPT	0.94	1.91	2.91	1.62	0.6#
633F-SS07	0.75-14 NPT	0.78	1.50	2.31	1.42	0.5#
633F-SS05	0.50-14 NPT	0.56	1.50	2.31	1.42	0.5#
ADAPTOR SIZE	THREAD SIZE	"A"	"B"	"C"	"D"	WT.

CONFIDENTIAL THIS DOCUMENT CONTAINS INFORMATION WHICH IS PROPRIETARY TO OPW, AND SHOULD BE PROTECTED ACCORDINGLY.

DESCRIPTION: SST KAMLOK ADAPTOR - NPT THREAD

UNLESS OTHERWISE SPECIFIED
 TOLERANCES ON DIMENSIONS
 3 DECIMALS +/- 0.005
 2 DECIMALS +/- 0.015
 1 DECIMAL +/- 0.030
 ANGLES +/- 1/2 DEG
 MACHINED SURFACES 125 RMS MAX

SIGNATURES
 DRAWN: JPR 06-11-01
 CHECKED: NAC 06-18-01
 MATERIAL: A351-CF8M
 MO-DA-YR
 WEIGHT:

REV: REL
 SIZE: C

PART NUMBER:
633F
 SCALE: NONE SHEET 1 OF 1

OPW *Engineered Systems*
 A DOVER Resources Company
 Lebanon, Ohio 45036 USA
 3D GENERATED DRAWING

A

B

C

D

1

2

3

4

1

2

3

4