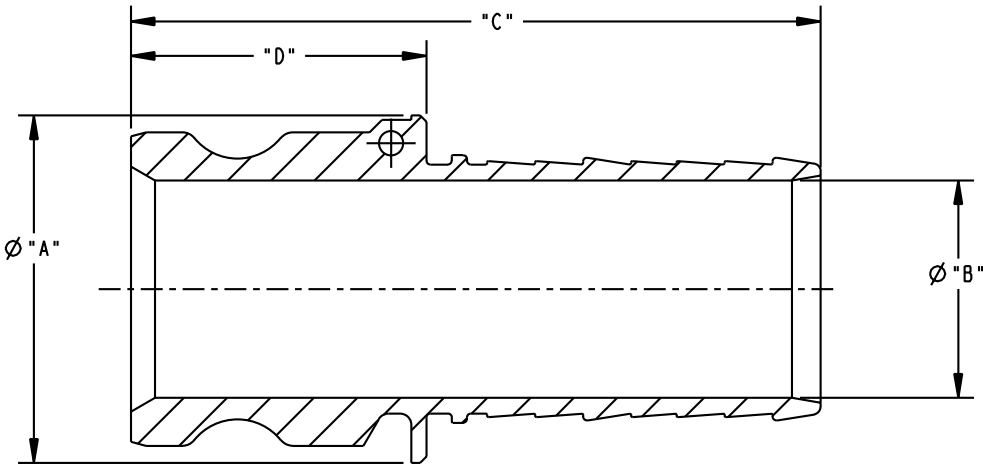
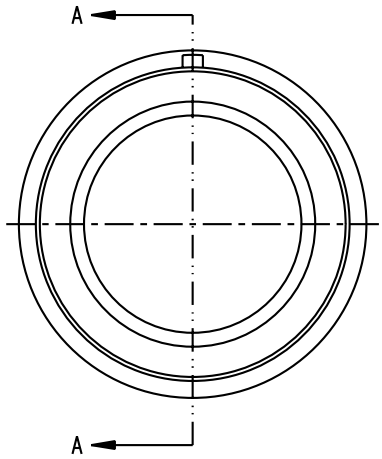


THIS DRAWING IS NOT TO BE SCALED. FOR ADDITIONAL INFORMATION. PLEASE CONTACT OUR ENGINEERING DEPT.

REVISIONS					
LTR	ECN #	DESCRIPTION	DRAWN	APPROVED	DATE
REL	-		JPR		09-05-01



SECTION A-A

633E-SS40	5.25	3.53	7.00	2.75
633E-SS30	4.00	2.69	6.53	2.50
633E-SS25	3.12	2.19	5.69	2.44
633E-SS20	2.75	1.72	5.47	2.34
633E-SS15	2.25	1.25	4.50	2.12
633E-SS12	2.00	1.00	4.31	2.06
633E-SS10	1.62	0.78	4.06	1.81
633E-SS07	1.38	0.56	3.44	1.44
633E-SS05	1.38	0.28	3.06	1.44
ADAPTOR SIZE	"A"	"B"	"C"	"D"

NOTES:
1. MATERIAL: ASTM A351 - CF-8M (316) STAINLESS STEEL.

CONFIDENTIAL THIS DOCUMENT CONTAINS INFORMATION WHICH IS PROPRIETARY TO OPW, AND SHOULD BE PROTECTED ACCORDINGLY.		DESCRIPTION: SST KAMLOK ADAPTOR - HOSE SHANK	
UNLESS OTHERWISE SPECIFIED TOLERANCES ON DIMENSIONS 3 DECIMALS +/- 0.005 2 DECIMALS +/- 0.015 1 DECIMAL +/- 0.030 ANGLES +/- 1/2 DEG MACHINED SURFACES 125 RMS MAX	SIGNATURES DRAWN: JPR CHECKED: MATERIAL:	MO-DA-YR 09-05-01 WEIGHT:	REV: REL SIZE: C PART NUMBER: 633E SCALE: NONE
		SHEET 1 OF 1 3D GENERATED DRAWING	

OPW Engineered Systems
A **DOVER** Resources Company
Lebanon, Ohio 45036 USA