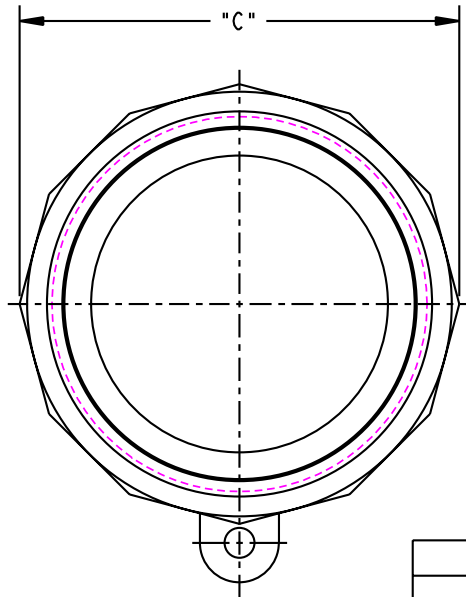
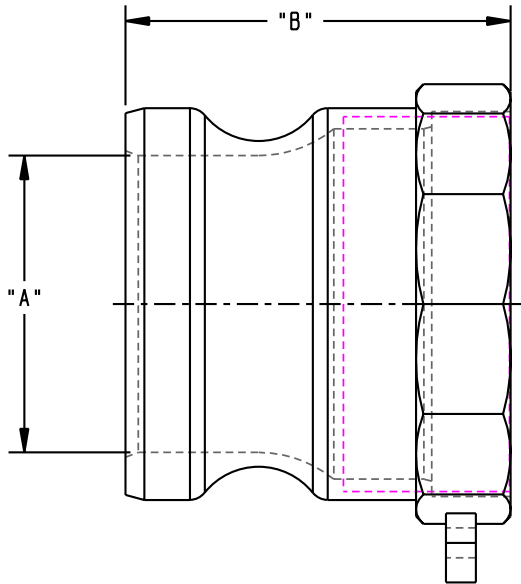


THIS DRAWING IS NOT TO BE SCALED. FOR ADDITIONAL INFORMATION. PLEASE CONTACT OUR ENGINEERING DEPT.

REVISIONS					
LTR	ECN #	DESCRIPTION	DRAWN	APPROVED	DATE
REL	-		JPR		12-06-01
A	41494	PRODUCT NO. 633A WAS 733A	SCK		



633A-SS40	4.00-8 NPT	3.81	3.19	5.56
633A-SS30	3.00-8 NPT	2.81	2.81	4.31
633A-SS25	2.50-8 NPT	2.19	2.75	3.50
633A-SS20	2.00-11.5 NPT	1.75	2.56	2.62
633A-SS15	1.50-11.5 NPT	1.38	2.38	2.25
633A-SS12	1.25-11.5 NPT	1.06	2.25	1.94
633A-SS10	1.00-11.5 NPT	0.88	2.00	1.69
633A-SS07	0.75-14 NPT	0.75	1.62	1.38
633A-SS05	0.50-14 NPT	0.56	1.62	1.38
ADAPTOR SIZE	THREAD SIZE	"A"	"B"	"C"

NOTES:

1. MATERIAL: ASTM A351 - CF-8M (316) STAINLESS STEEL.
2. ALL NPT THREADS CONFORM TO AMERICAN SOCIETY OF MECHANICAL ENGINEERS, USA STANDARD B2.1.

CONFIDENTIAL THIS DOCUMENT CONTAINS INFORMATION WHICH IS PROPRIETARY TO OPW, AND SHOULD BE PROTECTED ACCORDINGLY.

UNLESS OTHERWISE SPECIFIED TOLERANCES ON DIMENSIONS 3 DECIMALS +/- 0.005 2 DECIMALS +/- 0.015 1 DECIMAL +/- 0.030 ANGLES +/- 1/2 DEG MACHINED SURFACES 125 RMS MAX	SIGNATURES		MO-DA-YR
	DRAWN:	JPR	09-05-01
	CHECKED:		
	MATERIAL:		WEIGHT:

DESCRIPTION: SST KAMLOK ADAPTOR - NPT THREAD	
REV: A	PART NUMBER: 633A
SIZE: C	SCALE: NONE SHEET 1 OF 1
3D GENERATED DRAWING	

OPW *Engineered Systems*
A **DOVER** Resources Company
Lebanon, Ohio 45036 USA