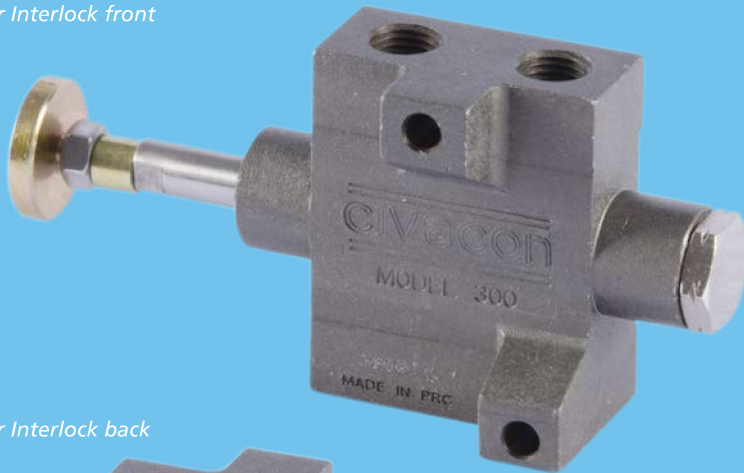


## 300 / 301 Air Interlock Valve

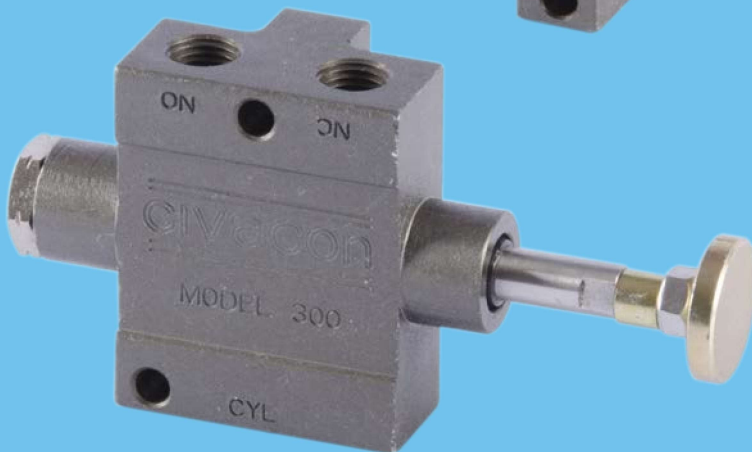
Civacon's New Model 300 Series Air Interlock Valve is the perfect solution for all your petroleum transport interlock needs. From drive-off protection on APIs and Vapor Adaptors, to interlocking guard bars and cabinet doors, our Model 300 Air Interlock Valve fits right in. The Model 300 valve is a drop-in replacement for our earlier models and for competitive brands. The fit and function remain identical to previous models. Their new durable yet lightweight hard-coat anodized aluminum body, stainless steel internals and hardware deliver extreme durability, extended life and provide superior protection from chemicals and the elements.

This completely new design uses industry standard Parker Brand™, premium A5568B standard O-rings. Our valve features a unique and innovative "closed loop breather" design that requires no vent hole in the rear end cap. This provides a completely sealed design that won't "breathe in" moisture or contamination while in use. Maintenance requirements have been minimized for long, trouble-free operation.

300, Air Interlock front



300, Air Interlock back

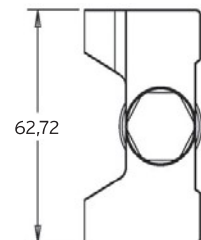
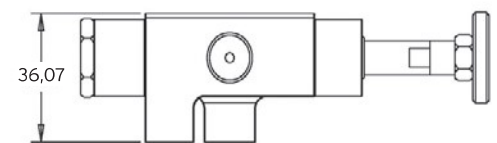
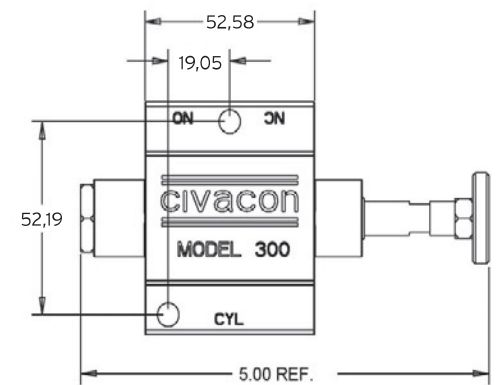


### Features and Benefits

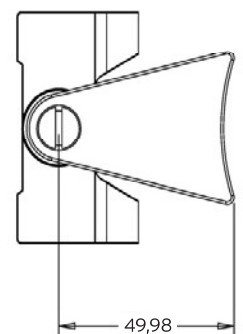
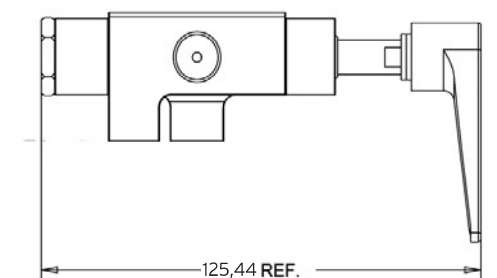
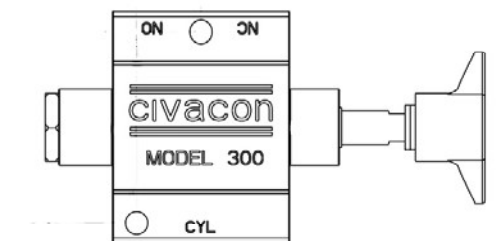
- **Corrosion resistant** nickel-plated aluminium body
- **Main shaft** wiper seal will prevent contaminations from entering seal area
- **Universal mounting** fits all civacon API bottom loading adaptors and vapor recovery adaptors
- **Stainless steel** operating shaft and spring eliminating corrosion
- **Lightweight** aluminium end cap
- **Different end cap** designs possible to meet specific requirements
- **Electrically** continuous

### Specifications

#### MODEL 300

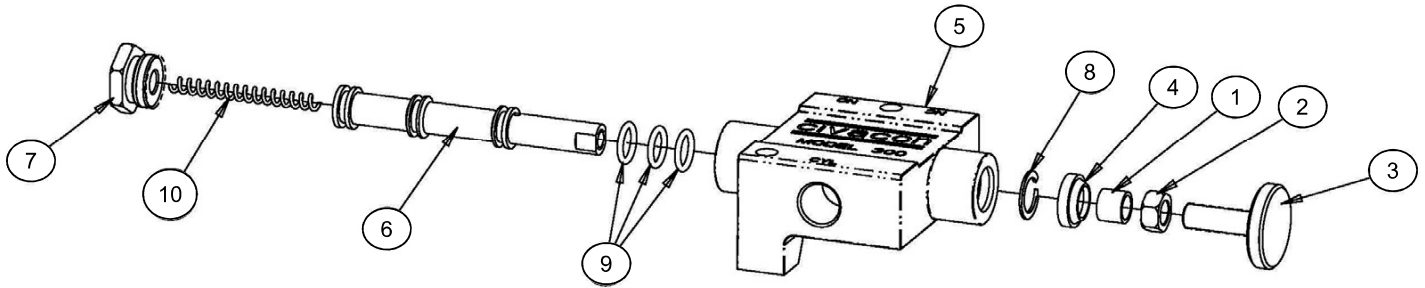


#### MODEL 301



All dimensions are in mm

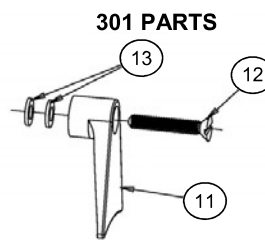
## Spare parts



Item	Art. number	Description	QTY
1	200 - 5 <sup>1</sup>	Brass Spacer Sleeve	1
2	200 - 6 <sup>1</sup>	Hex Nut , 1/4 x 20 SS	1
3	H20488M	Stem Adjuster	1
4	12159	Wiper Seal	1
5	12165	Body	1
6	12167 <sup>2</sup>	Stainless Steel Shaft	1
7	12168	Rear End Cap / Spring Retainer	1
8	12199	Spiral Retaining Ring	1
9	H20506M <sup>2</sup>	O - Ring Size 2-012 Buna N (Parker)	3
10	H20507M <sup>2</sup>	Spring	1

### Model 301 Parts

11	11393	Push Plate	1
12	12013	Screw FLHD 1/4 x 20 x 1 1/2 LG 18- 8 SS	1
13	H20312M	Flat Washer	2



<sup>1</sup>- included in 200 RK  
<sup>2</sup>- included in 300 RK

## General specifications

### 300 / 301 Air Interlock Valve

● Valve type	3-way
● Air connection	1/4" NPT
● Air hose	6 mm
● Weight	model 300 250 g model 301 265 g

## Related products

Art. number	Description
633LVB	4" High flow vapor recovery adaptor equipped with sight glass
891-series	4" API bottom loading adaptor

## Ordering specifications

Art. number	Description
300	Air Interlock Valve with push button, 3-way, for 4" 891-series API bottom loading adaptor
301	Air Interlock Valve with elongated push button, 3-way, for 4" 633LVB high flow vapor recovery adaptor