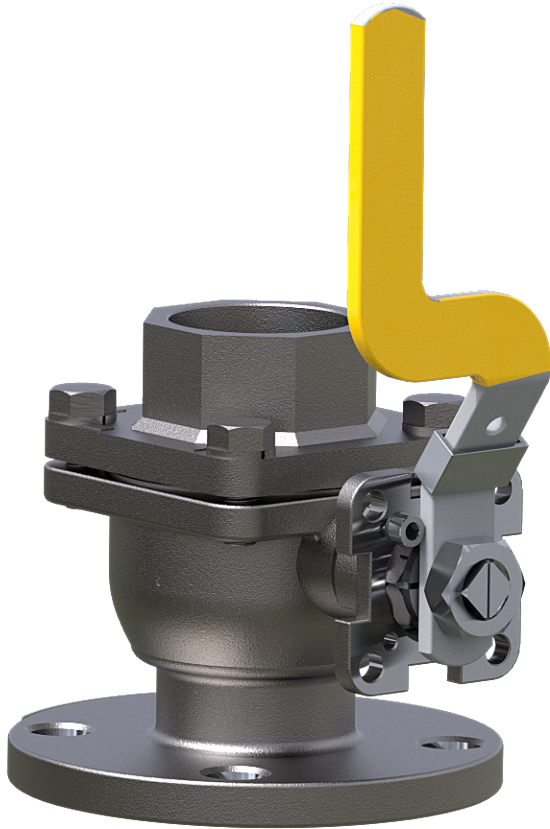


Model A-7200 / A-7240

2" Ball Valve, Full Port

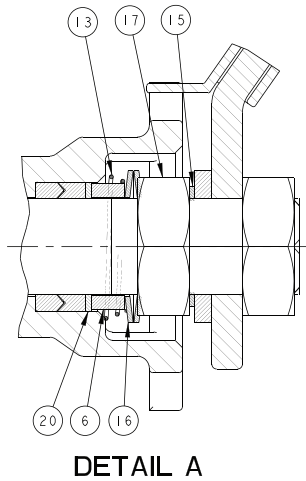
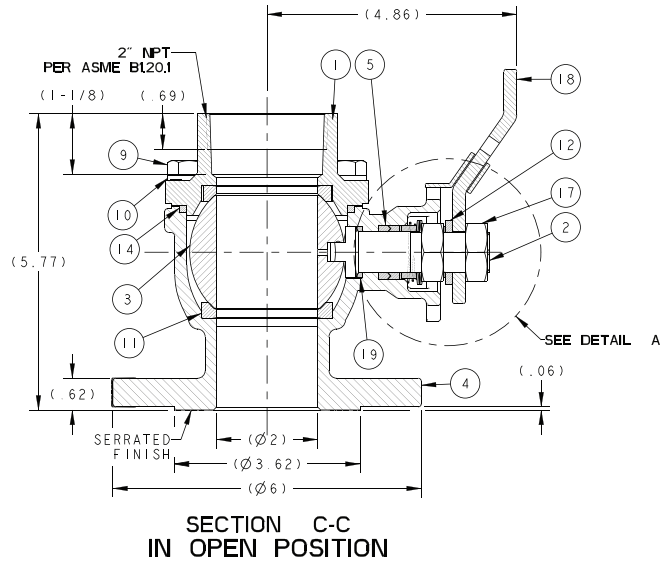


Technical Specifications

- Body cap end is NPT threaded which pairs with the OES Kamlok / Kamvalok options
- Available in a 2" and 3" configuration, as well as Stainless Steel and Carbon Steel
- Virgin PTFE seals
- Flange X Threaded Design - Great for connecting an adapter directly to valve
- Full-Bore Design - For unrestricted higher flow rates for quicker unloading
- 6" & 7.5" Diameter Flange - For easy replacement of competitor valve

Model A-7200 / A-7240

2" Ball Valve, Full Port



Item	Qty	Part Name	A-7200		A-7240	
			Material	Part No.	Material	Part No.
1	1	End Cap	ASTM A216-WCB	7200-1-CS	ASTM A351 CF8M	7240-1-MO
2	1	Stem	ASTM A564 17-4PH H1150D	7200-2-SS	ASTM A564 17-4PH H1150D	7200-2-SS
3	1	Ball	ASTM A351 CF8	7200-3-SS	ASTM A351 CF8M	7240-3-MO
4	1	Body	ASTM A216-WCB	7200-4-CS	ASTM A351 CF8M	7240-4-MO
5	1	Packing Seal	PTFE	7200-5-TF	PTFE	7200-5-TF
6	1	Spacer	AISI 304	7200-6-SS	AISI 304	7200-6-SS
7	1	Socket Head Cap Screw	AISI 304	7240-7-SS	AISI 304	7240-7-SS
8	1	Nut	AISI 304	7240-8-SS	AISI 304	7240-8-SS
9	4	Hex Cap Screw	AISI 304	7240-9-SS	AISI 304	7240-9-SS
10	4	Lockwasher	AISI 304	7240-10-SS	AISI 304	7240-10-SS
11	2	Seal, Ball	VIRGIN-PTFE	7200-11-VTF	VIRGIN-PTFE	7200-11-VTF
12	1	Lockwasher	AISI 304	7200-12-SS	AISI 304	7200-12-SS
13	1	Grounding Spring	AISI 301	7200-13-SS	AISI 301	7200-13-SS
14	1	Gasket	PTFE	7200-14-TF	PTFE	7200-14-TF
15	1	Nut Lock	AISI 304	7200-15-SS	AISI 304	7200-15-SS
16	2	Disc Springs	AISI 301	7200-16-SS	AISI 301	7200-16-SS
17	2	Packing Nut	AISI 304	7200-17-SS	AISI 304	7200-17-SS
18	1	Handle with Cover, RH	ALLOY STEEL	7200-18-AS	ALLOY STEEL	7200-18-AS
19	1	Thrust Washer	PTFE	7200-19-TF	PTFE	7200-19-TF
20	1	Packing Protector	CARBON 25% PTFE	7200-21-TF	CARBON 25% PTFE	7200-21-TF
21	2	Drive Screw	STAINLESS STEEL	763-11-SS	STAINLESS STEEL	763-11-SS
22	1	Name Plate	STAINLESS STEEL	7200-22-SS	STAINLESS STEEL	7240-22-SS
23	1	Washer	STAINLESS STEEL	7200-20-SS	STAINLESS STEEL	7200-20-SS

NOTE: (*) - Alternate Materials Are Available