

Model A-719-ML/A-190 Dual Valve

1" Angle Valve with Paired Check Valve

Feb. 14, 2018

(Rev. 1.2)

TECHNICAL SPECIFICATIONS

- Maximum Operating Pressure: 600 psig
- Maximum Operating Temperature: 350°F (Limited by elastometric seals)
- Flow Coefficient (C_v) w/A-190 21 (@ wide-open position)
- Handwheel Rotation: Clockwise to close produces upward motion of stem
- Handwheel Closing Torque: 20-25 ft-lb (Max. Torque: 80 ft-lb limited by Shear Feature)
- Stroke: 0.70" Nominal
- Packing Screw Torque: Tighten to 30 ft-lb
- Four 5/8"-11 x 2-3/4" minimum length studs required. Torque to 200 ft-lb max.
- Mounting Flange: 5" round x 0.75" thick with (4) 11/16" holes on 3-3/4" bolt circle
- Tongue Dimensions: 2.930" OD x 2.375" ID x 0.250" (0.125" thick gasket required; not furnished with valve)
- Plated outlet threads
- 1" Female NPT Outlet Connection
- AAR Approval (applied for)
- Compatible with Chlorine Institute's Emergency C Kit

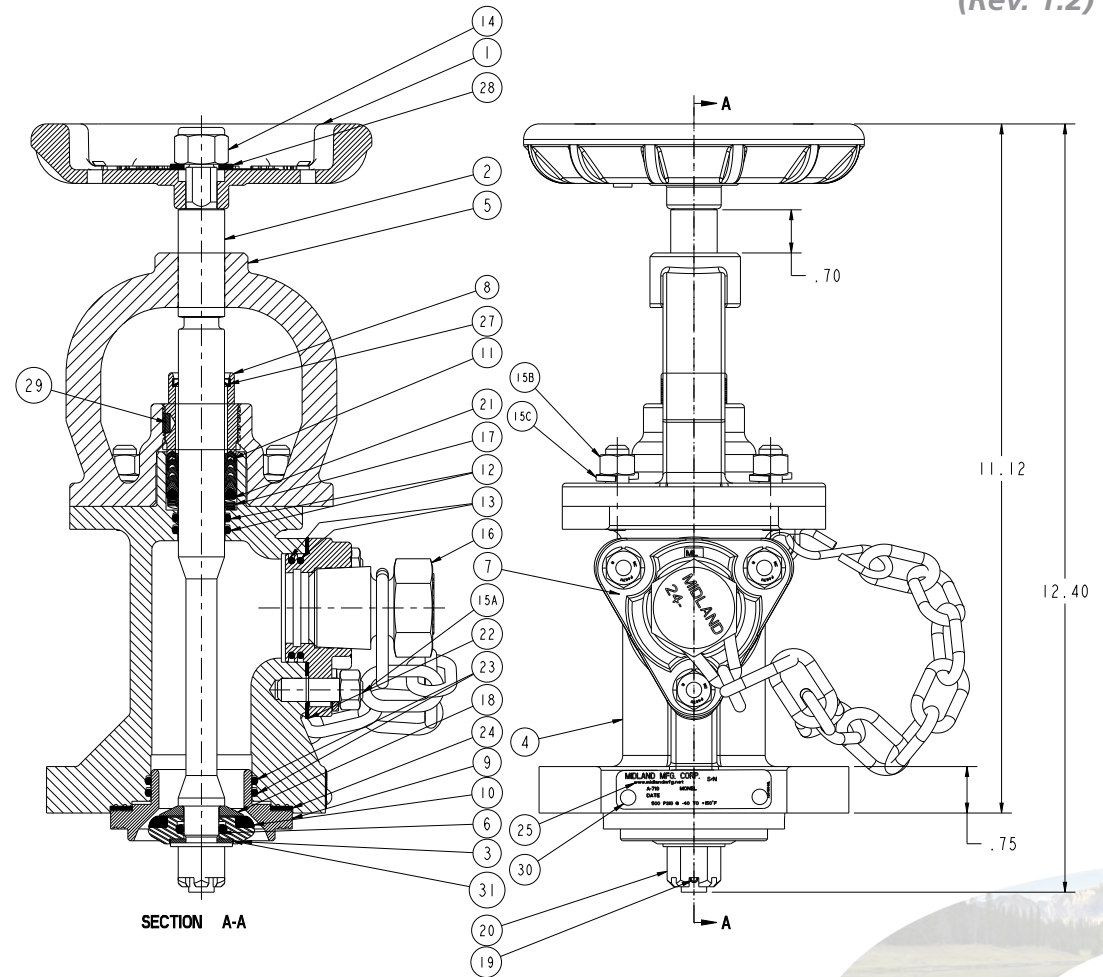


ITEM	QTY	PART NAME	MATERIAL	PART NO.
1	1	HANDWHEEL	CAST IRON	713-1-C1
2	1	STEM	HASTELLOY C	719-2-HC
3	1	SEAL RETAINER	MONEL	719-3-ML
4	1	BODY	MONEL	719-4-ML
5	1	BONNET	MONEL	719-5-ML
6	1	SEAT O-RING	VITON*	728-164-VL
7	1	OUTLET FLANGE	MONEL**	713-7-ML
8	1	PACKING SCREW	MONEL	713-81-ML
9	1	BODY INSERT	HASTELLOY C	719-9-HC
10	1	SEAT SEAL	PTFE	719-10-TF
11	5	PACKING RING	PTFE	713-11-TF
12	2	STEM O-RING	VITON*	713-12-VL
13	2	OUTLET O-RING	VITON*	713-13-VL
14	1	NYLON INSERT LOCKNUT	STAINLESS STEEL	713-14-SS
15A	7	STUD	MONEL	713-151-ML
15B	7	NUT	MONEL	713-153-MLTF
15C	7	LOCKWASHER	MONEL	713-152-ML
16	1	PIPE PLUG & CHAIN	MONEL/STN. STEEL	713-162-ML
17	1	PACKING SPRING	INCONEL	713-17-IN
18	1	RETAINER SEAL WASHER	MONEL	719-18-ML
19	1	RETAINER PIN	HASTELLOY C	728-18-HC
20	1	RETAINER NUT	INCONEL	719-20-IN
21	1	MALE PACKING ADAPTER	MONEL	713-21-ML
22	1	OUTLET FLANGE GASKET	GYLON	713-22-GY
23	2	BODY O-RING, 2-130	VITON	719-23-VL
24	1	INSERT GASKET	PTFE	719-24-TF
25	1	NAMEPLATE	MONEL	719-25-ML
26	1	INSTRUCTION PLATE	PLASTIC	719-26-PS
27	1	WIPER	PTFE	713-33-TF
28	1	FLAT WASHER	STAINLESS STEEL	713-141-SS
29	2	INSERT	VIRGIN PTFE	713-82-TF
30	2	DRIVE SCREW	STAINLESS STEEL	763-11-SS
31	1	FLAT WASHER	KYNAR	719-31-KY

NOTE:
 *ALTERNATE MATERIAL AVAILABLE
 **ALTERNATE MATERIAL HASTELLOY C. PT. NO. 713-7-HC MAT'L SPEC. ASTM A494 GRADE CW-2M OR GRADE CW-6M

Model A-719-ML

1" Angle Valve
 Feb. 14, 2018
 (Rev. 1.2)



NOTE:
 • VALVE OUTLET NOMINAL HEIGHT: 3-9/16"
 • 5" FLANGE DIAMETER WITH (4) 11/16" HOLES ON 3-3/4" BOLT CIRCLE

Model A-190

Check Valve

Feb. 14, 2018

(Rev. 1.2)

ITEM	QTY	PART NAME	MATERIAL	PART NO.
1	1	STEM	HASTELLOY C	190-1-HC
2	1	BODY	HASTELLOY C	190-2-HC
3	1	RETAINER SEAL WASHER	MONEL	190-3-ML
4	1	SEAT SEAL	VIRGIN PTFE	190-4-TF
5	1	NUT, 7/16-20	INCONEL	713-201-IN
6	1	SPRING	INCONEL	190-6-IN
7	1	SPRING GUIDE	MONEL	190-7-ML
8	1	LOCK RING	MONEL	190-8-ML
9	4	TEFLON INSERT	PTFE	210-13-TF
10	1	PIN, $\phi 1/8 \times 5/8$ KNURL	HASTELLOY C	720-19-HC
11	1	O-RING, 2-229 SIZE	VITON	723-23-VL
12	1	GASKET	VIRGIN PTFE	190-12-TF

NOTE:

- CLOSING FORCE: 200 LBF
- 2-1/8" -12UN THREADS

