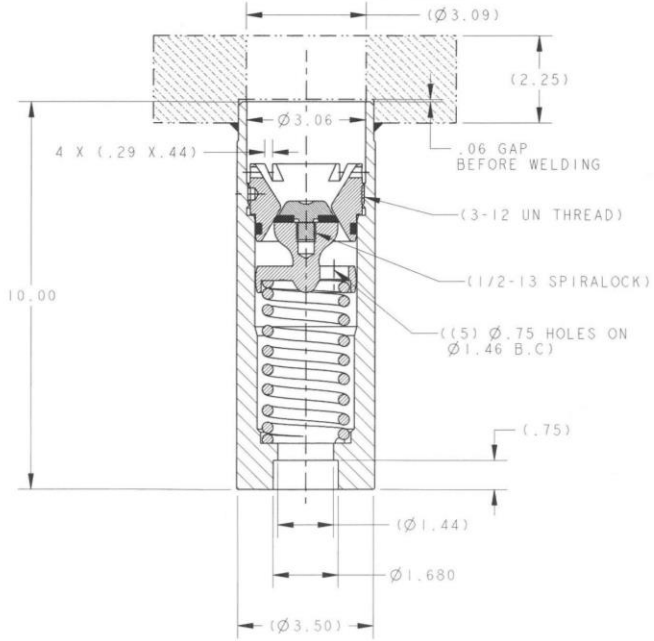


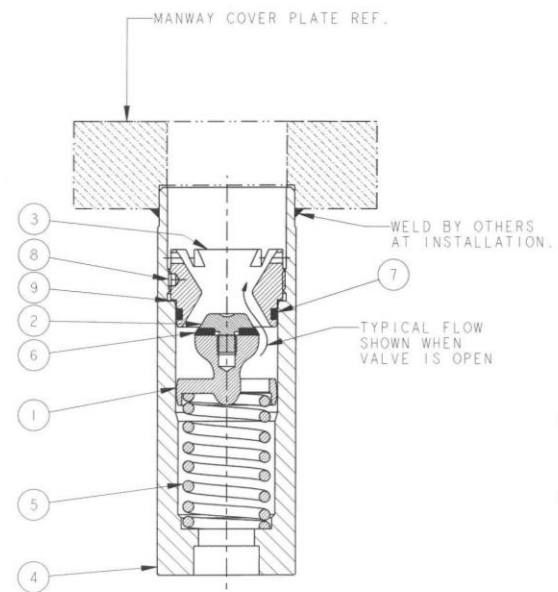
# A-180-ML-H01

THIS DRAWING IS NOT TO BE SCALED. FOR ADDITIONAL INFORMATION, PLEASE CONTACT OUR ENGINEERING DEPT.

ITEM	QTY	PART NAME	A-180-ML-H01	
			MATERIAL	PART_NO
1	1	GUIDE	HASTELLOY C	180-1-HC
2	1	RETAINER	HASTELLOY C	180-2-HC
3	1	SEAT	HASTELLOY C	180-3-HC
4	1	BODY ,MACHINED	MONEL	180-4-ML
5	1	SPRING	INCONEL X 750	180-5-IN
6	1	SEAT SEAL	VIRGIN TEFLON	180-6-VTF
7	1	O-RING (-331)	KALREZ 6375	180-7-KZ-6375
8	2	INSERT	VIRGIN TEFLON	180-8-TF
9	1	GASKET	VIRGIN TEFLON	180-9-TF



ASSEMBLY CLOSED POSITION



ASSEMBLY OPEN POSITION

- NOTES:
1. USE ASSEMBLY TOOL TO T-A-180 TO INSTALL /REMOVE GUIDE.
  2. AFTER ASSEMBLY SEALS TO BE TESTED @ 500 PSI FOR 2 MIN.

AAR E082001

**CAUTION:**  
SPRING LOADED ASSEMBLY.