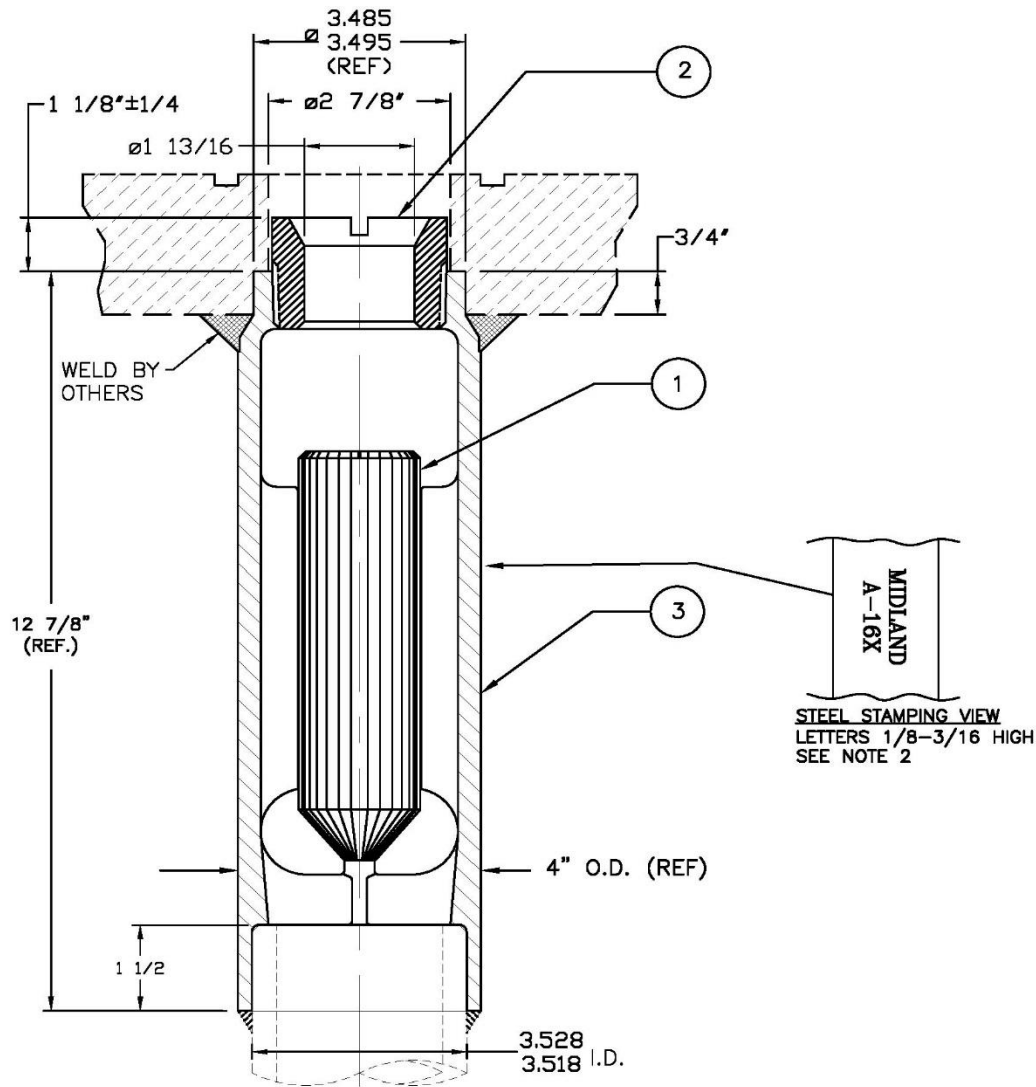


Model A-167

Check Valve

July 20, 2015



Item	QTY	Part Name	Material	Part No.
1	1	FLOAT	STAINLESS	167-1-SS
2	1	PLUG (1)	STAINLESS (2)	167-2-SS
3	1	BODY	STAINLESS	167-3-SS

NOTES:

- AAR APPROVAL NO. E122001
- USE WRENCH T-312-CS TO INSTALL OR REMOVE PLUG
- FOR NITRONIC 60 PLUG, ADD SUFFIX -N60 TO A-167 (i.e. A-167-N60)
- MAXIMUM FLOW RATE IS 1477 LBS PROPANE PER MINUTE
- MOUNT TYPE : WELD