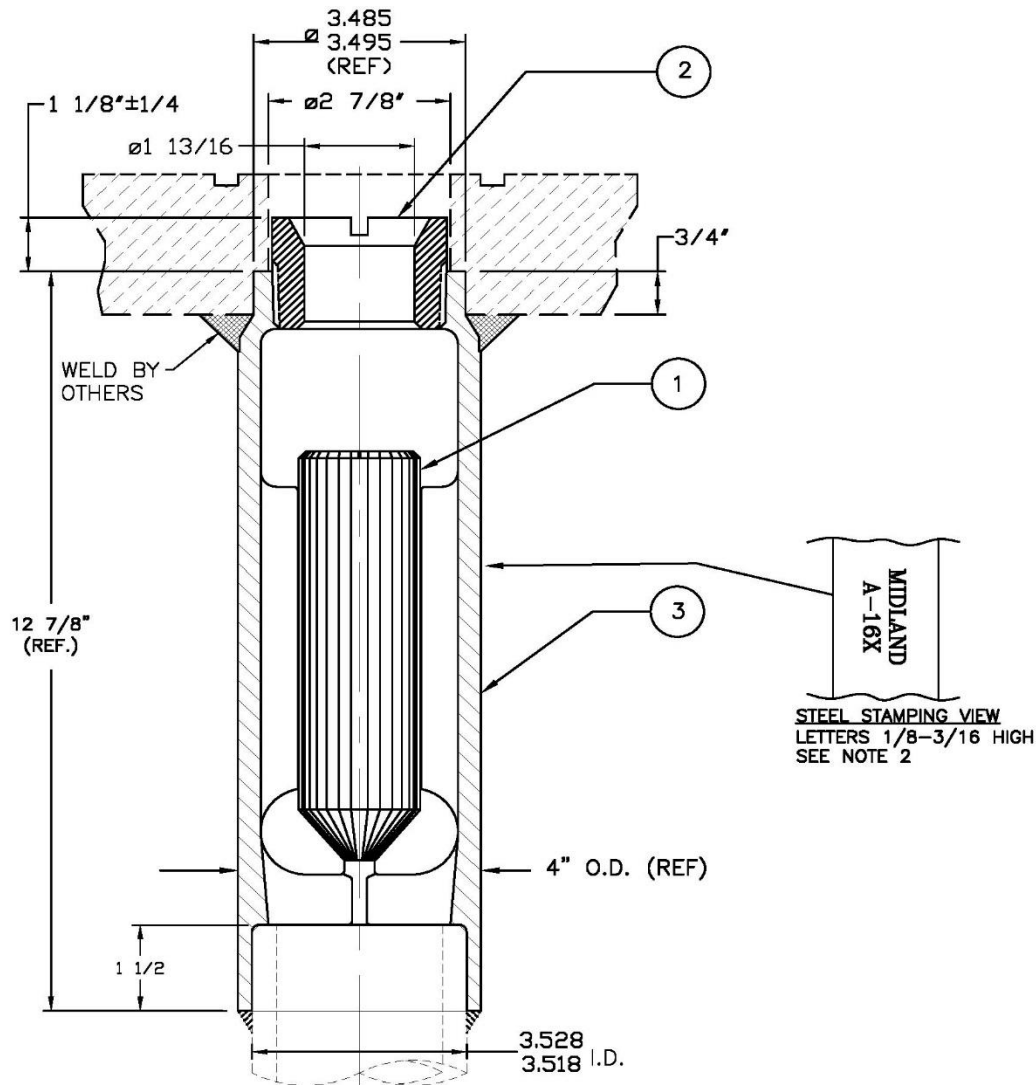


Model A-164

Check Valve

July 29, 2015



| Item | QTY | Part Name | Material | Part No. |
|------|-----|-----------|----------|----------|
| 1 | 1 | FLOAT | STEEL | 164-1-CS |
| 2 | 1 | PLUG (1) | STEEL | 164-2-CS |
| 3 | 1 | BODY | STEEL | 164-3-CS |

NOTES:

- AAR APPROVAL NO. E122001
- USE WRENCH T-312-CS TO INSTALL OR REMOVE PLUG
- FOR NITRONIC 60 PLUG, ADD SUFFIX -N60 TO A-164 (i.e. A-164-N60)
- MAXIMUM FLOW RATE IS 1477 LBS PROPANE PER MINUTE
- MOUNT TYPE : WELD