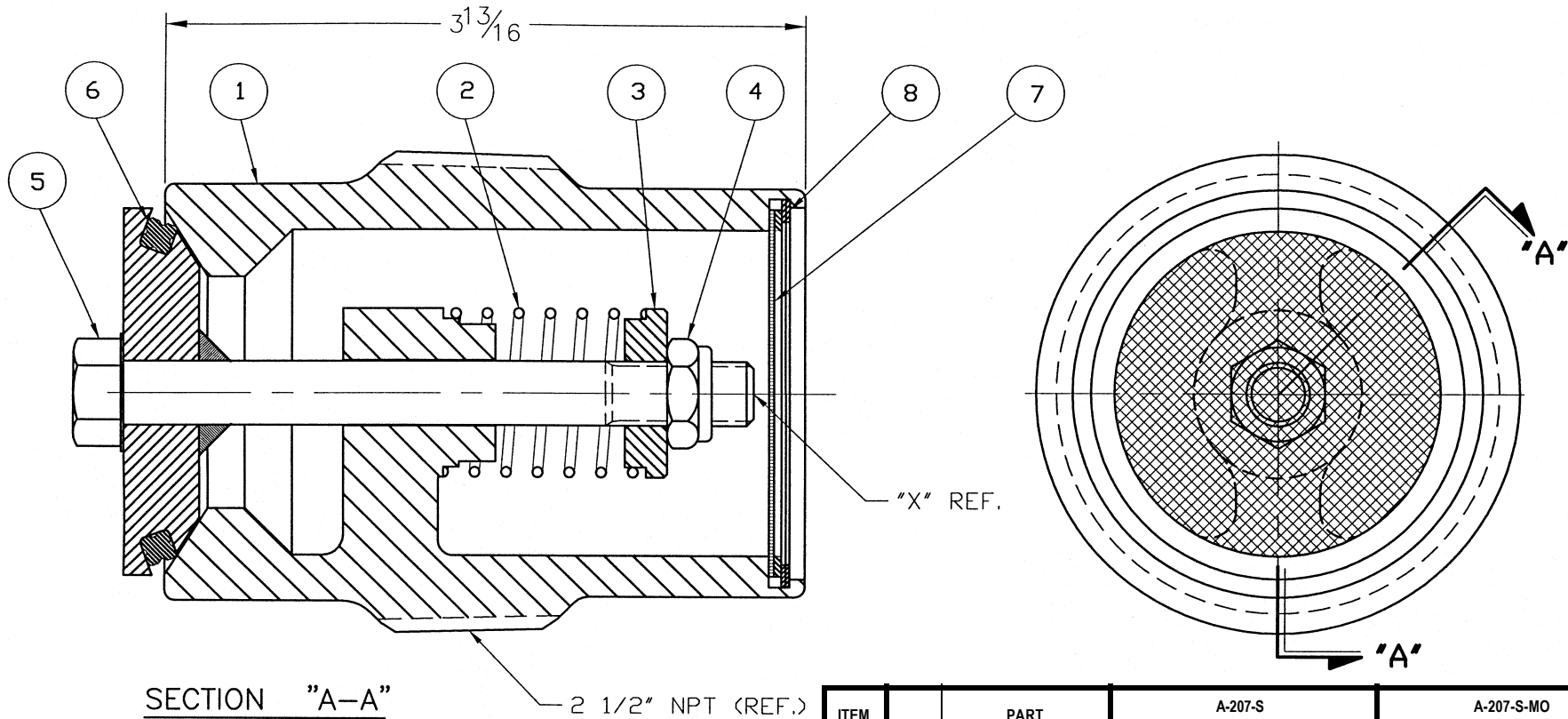


© 2002 Midland Manufacturing Corp.

All designs subject to change without notice. Installation dimensions and mounting arrangements are for general information. Certified drawings are available upon request.

2 1/2"



SECTION "A-A"

2 1/2" NPT (REF.)

Standard minimum start to discharge pressure setting is 0.75 PSI vacuum.  
Alternate start to discharge pressure settings are available.

Net flow area: 1.12 square inches

| ITEM NO. | QTY. | PART NAME           | A-207-S        |           | A-207-S-MO     |           |
|----------|------|---------------------|----------------|-----------|----------------|-----------|
|          |      |                     | MATERIAL       | PART NO.  | MATERIAL       | PART NO.  |
| 1        | 1    | BODY <sup>(1)</sup> | STAINLESS      | 207-11-SS | CF8M STAINLESS | 207-11-MO |
| 2        | 1    | SPRING              | STAINLESS      | 207-2-MO  | 316 STAINLESS  | 207-2-MO  |
| 3        | 1    | SPRING SEAT         | STAINLESS      | 207-3-SS  | STAINLESS      | 207-3-SS  |
| 4        | 1    | LOCK NUT            | STAINLESS      | 207-4-SS  | 316 STAINLESS  | 207-4-MO  |
| 5        | 1    | STEM <sup>(1)</sup> | STAINLESS      | 207-52-SS | 316 STAINLESS  | 207-52-MO |
| 6        | 1    | PRESSURE SEAL       | WHITE NEOPRENE | 205-6-WNE | WHITE NEOPRENE | 205-6-WNE |
| 7        | 1    | SCREEN ASSEMBLY     | STAINLESS      | 207-7-SS  | 316 STAINLESS  | 207-7-MO  |
| 8        | 1    | RETAINER RING       | STAINLESS      | 207-8-SS  | 316 STAINLESS  | 207-8-MO  |

NOTE: 1 Passivated



TO PLACE AN ORDER, OR JUST ASK A QUESTION, CALL (847) 677 - 0333 OR FAX (847) 677 - 0138

REVISION 4.0

1/8/04