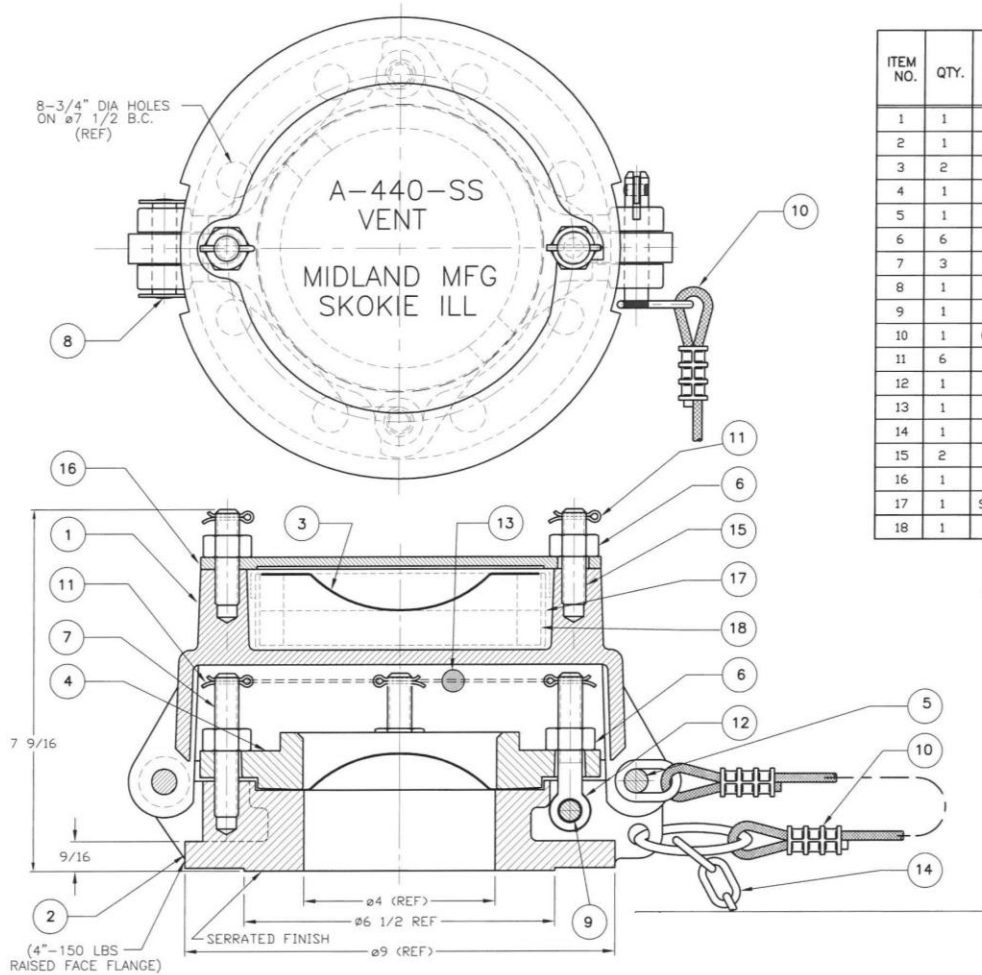


A-440-MO, A-440-SS



ITEM NO.	QTY.	PART NAME	A-440-SS		A-440-MO	
			MATERIAL	PART NUMBER	MATERIAL	PART NUMBER
1	1	TOP	STAINLESS STEEL	440-1-SS	STAINLESS STEEL	440-1-SS
2	1	BASE	STAINLESS STEEL	440-2-SS	STAINLESS STEEL	440-2-MO
3	2	DISC (2)	STAINLESS STEEL	440-3-MO	STAINLESS STEEL	440-3-MO
4	1	RETAINER	STAINLESS STEEL	440-4-SS	STAINLESS STEEL	440-4-SS
5	1	SWING PIN	STAINLESS STEEL	425-5-SS	STAINLESS STEEL	425-5-SS
6	6	NUT	STAINLESS STEEL	429-6-SS	STAINLESS STEEL	429-6-SS
7	3	STUD	STAINLESS STEEL	440-7-SS	STAINLESS STEEL	440-7-SS
8	1	HINGE PIN	STAINLESS STEEL	440-8-SS	STAINLESS STEEL	440-8-SS
9	1	EYE BOLT PIN	STAINLESS STEEL	429-9-SS	STAINLESS STEEL	429-9-SS
10	1	CABLE ASSEMBLY (3)	STAINLESS STEEL	440-10-SS	STAINLESS STEEL	440-10-SS
11	6	COTTER PIN	STAINLESS STEEL	425-11-SS	STAINLESS STEEL	425-11-SS
12	1	EYE BOLT	STAINLESS STEEL	429-12-SS	STAINLESS STEEL	429-12-SS
13	1	SEAL (1)	STAINLESS /LEAD	425-13-PB	STAINLESS /LEAD	425-13-PB
14	1	TANK CHAIN (1)	STAINLESS STEEL	440-14-SS	STAINLESS STEEL	440-14-SS
15	2	HOLDER STUD	STAINLESS STEEL	440-15-SS	STAINLESS STEEL	440-15-SS
16	1	TOP PLATE	STAINLESS STEEL	440-16-SS	STAINLESS STEEL	440-16-SS
17	1	SPARE DISC HOLDER	PLASTIC	440-17-PL	PLASTIC	440-17-PL
18	1	SPACER	FOAM	460-17-PU	FOAM	460-17-PU

NOTES:

1. NOT FURNISHED UNLESS REQUESTED.
2. 165 PSIG
3. SEE DRG A-440-SS,-MO FOR CHAIN VERSION (CAD FILE NO. A-440-CHAIN).

PATENTED

AAR PRD122008