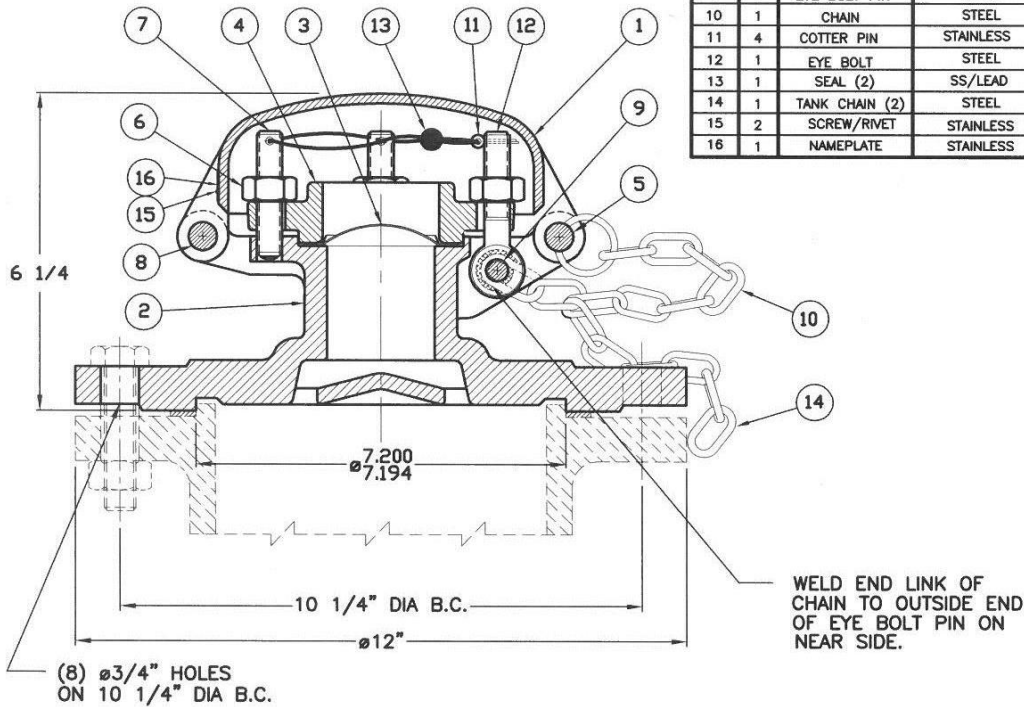


# A-430, A-432, A-434

ITEM	QTY	PART NAME	A-430		A-432		A-434	
			MATERIAL	PART NO.	MATERIAL	PART NO.	MATERIAL	PART NO.
1	1	TOP	MALL. IRON	425-1-MI	MALL. IRON	425-1-MI	STAINLESS	429-1-SS
2	1	BASE, FLANGED	STEEL	430-2-CS	STAINLESS	432-2-SS	STAINLESS	432-2-SS
3	1	DISC (2)	STAINLESS	425-3-SS	STAINLESS	425-3-SS	STAINLESS	425-3-SS
4	1	RETAINER	DUCTILE IRON	425-4-DI	DUCTILE IRON	425-4-DI	STAINLESS	429-4-SS
5	1	SWING PIN ASM	SS/STEEL	425-5-XS	SS/STEEL	425-5-XS	STAINLESS	429-5-SS
6	4	NUT	STEEL	425-6-CS	STEEL (1)	425-6-CS	STAINLESS	429-6-SS
7	3	STUD	STEEL	425-7-CS	STEEL (1)	425-7-CS	NITRONIC 60	429-71-N60
8	1	HINGE PIN	STEEL	425-8-CS	STEEL (1)	425-8-CS	STAINLESS	429-8-SS
9	1	EYE BOLT PIN	STEEL	425-9-CS	STEEL	425-9-CS	STAINLESS	429-9-SS
10	1	CHAIN	STEEL	24-3-CS	STEEL	24-3-CS	STEEL (1)	24-3-CS
11	4	COTTER PIN	STAINLESS	429-72-SS	STAINLESS	429-72-SS	STAINLESS	429-72-SS
12	1	EYE BOLT	STEEL	425-12-CS	STEEL (1)	425-12-CS	STAINLESS	429-12-SS
13	1	SEAL (2)	SS/LEAD	22-72-PB	SS/LEAD	22-72-PB	SS/LEAD	22-72-PB
14	1	TANK CHAIN (2)	STEEL	425-14-CS	STEEL (1)	425-14-CS	STEEL (1)	425-14-CS
15	2	SCREW/RIVET	STAINLESS	763-11-SS	STAINLESS	763-11-SS	STAINLESS	763-11-SS
16	1	NAMEPLATE	STAINLESS	424-16-SS	STAINLESS	424-16-SS	STAINLESS	424-16-SS



**NOTES:**

- (1) ALTERNATE MATERIALS AVAILABLE.
- (2) NOT FURNISHED UNLESS REQUESTED.
- (3) AAR # PRD102008