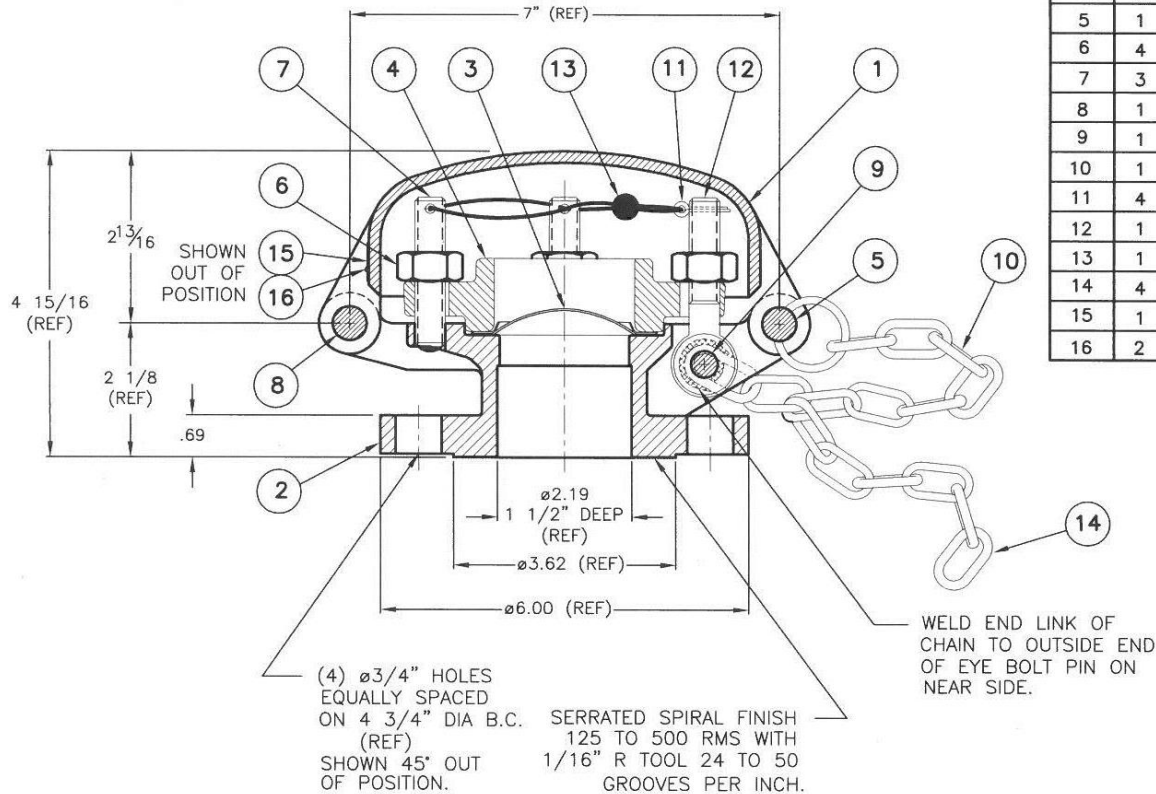


A-429-F



ITEM	QTY	PART NAME	MATERIAL	PART NUMBER
1	1	TOP	STAINLESS STEEL	429-1-SS
2	1	BASE, FLANGED	STAINLESS STEEL	427-22-SS
3	1	DISC (2)	STAINLESS STEEL	425-3-SS
4	1	RETAINER	STAINLESS STEEL	429-4-SS
5	1	SWING PIN ASSEMBLY	STAINLESS STEEL	425-5-SS
6	4	NUT	STAINLESS STEEL	429-6-SS
7	3	STUD	NITRONIC 60	429-71-N60
8	1	HINGE PIN	STAINLESS STEEL	429-8-SS
9	1	EYE BOLT PIN	STAINLESS STEEL	425-9-SS
10	1	CHAIN	STEEL (1)	24-3-CS
11	4	COTTER PIN	STAINLESS STEEL	429-72-SS
12	1	EYE BOLT	STAINLESS STEEL	429-12-SS
13	1	SEAL (2)	SS/LEAD	22-72-PB
14	4	TANK CHAIN (2)	STEEL (1)	425-14-CS
15	1	NAMEPLATE	STAINLESS STEEL	424-16-SS
16	2	DRIVE SCREW	STAINLESS STEEL	763-11-SS

NOTES:

- (1) ALTERNATE MATERIALS AVAILABLE.
- (2) NOT FURNISHED UNLESS REQUESTED.