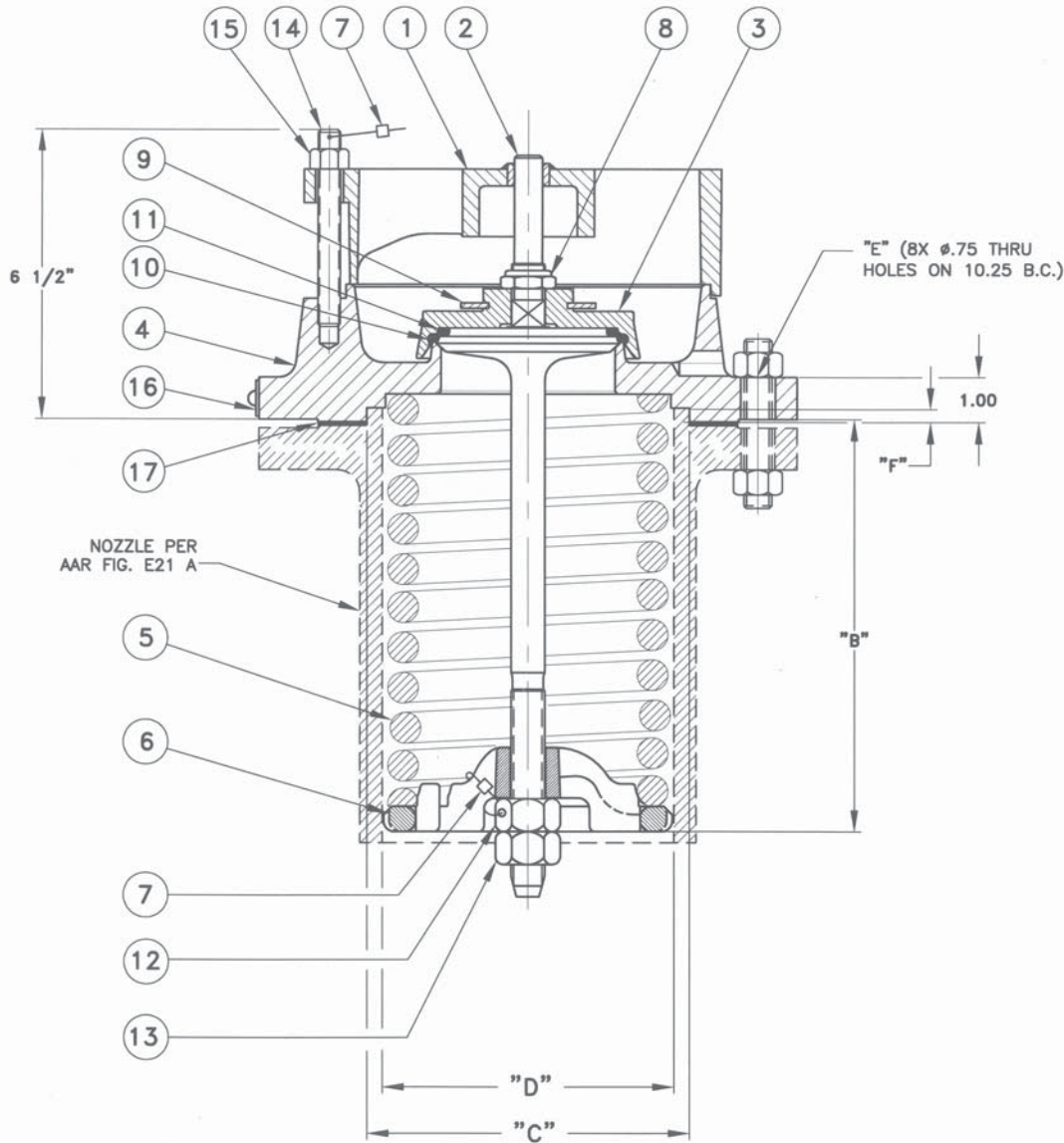


A-2035 thru A-2089 Pressure Relief Valve



| ITEM | QTY | PART NAME | CARBON STEEL WITH STAINLESS TRIM | | STAINLESS STEEL | | | |
|------|-----|----------------|----------------------------------|-------------|-----------------|-------------------|-------------|-----------|
| | | | MATERIAL | PART NUMBER | | MATERIAL | PART NUMBER | |
| | | | | A-2035 | A-2085 | | A-2039 | A-2089 |
| 1 | 1 | TOP GUIDE | STL W/SS INSERT | 23-1-XS | 23-1-XS | STAINLESS | 23-1-SS | 23-1-SS |
| 2 | 1 | STEM | STAINLESS | 23-2-SS | 27-2-SS | STAINLESS | 23-2-SS | 27-2-SS |
| 3 | 1 | RETAINER | STEEL PLATED (3) | 23-3-CS | 27-3-CS | STAINLESS | 23-3-MO | 27-3-SS |
| 4 | 1 | BODY | STEEL | 23-4-CS | 27-4-CS | STAINLESS | 23-4-SS | 27-4-SS |
| 5 | 1 | SPRING | ALLOY STL PLATED (3) | 23-5-AS | 28-5-AS | STAINLESS | 23-5-MO | 28-5-MO |
| 6 | 1 | FOLLOWER | STEEL PLATED (3) | 27-6-CS | 27-6-CS | STAINLESS | 27-6-MO | 27-6-SS |
| 7 | 2 | SEAL | SS/LEAD | 22-72-PB | 22-72-PB | SS/LEAD | 22-72-PB | 22-72-PB |
| 8 | 1 | TOP LOCK NUT | STEEL PLATED (3) | 23-8-CS | 23-8-CS | STAINLESS | 23-8-SS | 23-8-SS |
| 9 | 1 | WASHER | NEOPRENE (1) | 23-9-NE | 23-9-NE | NEOPRENE (1) | 23-9-NE | 23-9-NE |
| 10 | 1 | SEAT "O" RING | BUNA-N (1) | 23-10-BN | 27-10-BN | BUNA-N (1) | 23-10-BN | 27-10-BN |
| 11 | 1 | STEM "O" RING | BUNA-A (1) | 23-11-BN | 27-11-BN | BUNA-A (1) | 23-11-BN | 27-11-BN |
| 12 | 1 | ADJUSTMENT NUT | STEEL PLATED (3) | 23-12-CS | 23-12-CS | STAINLESS | 23-12-SS | 23-12-SS |
| 13 | 1 | LOCK NUT | STEEL PLATED (3) | 23-13-CS | 23-13-CS | STAINLESS | 23-13-SS | 23-13-SS |
| 14A | 2 | STUD | ALLOY STEEL | 23-14-AS | 23-14-AS | STAINLESS | 23-14-SS | 23-14-SS |
| 14B | 2 | STUD WITH HOLE | ALLOY STEEL | 23-141-AS | 23-141-AS | STAINLESS | 23-141-SS | 23-141-SS |
| 15 | 4 | NUT | STEEL | 10-15-CS | 10-15-CS | STAINLESS | 10-15-SS | 10-15-SS |
| 16 | 1 | NAMEPLATE | STAINLESS | 23-16-SS | 26-16-SS | STAINLESS | 24-16-SS | 20-89-SS |
| 17 | 1 | GASKET (2) | DURABLA BLACK (1) | 27-17-AB | 27-17-AB | DURABLA BLACK (1) | 27-17-AB | 27-17-AB |

NOTES:

1. ALTERNATE MATERIALS AVAILABLE.
2. NOT FURNISHED UNLESS REQUESTED.
3. STANDARD PLATING IS ZINC. PLATING MAY BE CHANGED OR ELIMINATED PER CUSTOMER'S SPECIFICATIONS.

| VALVE PART NO. | PRESSURE SETTING (PSIG) | FLOW RATE (SCFM-AIR) | DIA OF PORT (INCHES) | "B" APPROX. (INCHES) | WEIGHT OF VALVE (LBS) | NET FLOW AREA SQ. IN. |
|----------------|-------------------------|----------------------|----------------------|----------------------|-----------------------|-----------------------|
| A-2035 | 35 | 12,944 | 4 3/4" | 6 5/8" | 62 | 17.28 |
| A-2039 | 35 | 12,911 | 4 3/4" | 6 3/4" | 62 | 17.28 |
| A-2085 | 75 | 17,830 | 3 7/8" | 9 1/4" | 76 | 11.38 |
| A-2089 | 75 | 18,062 | 3 7/8" | 9 1/8" | 76 | 11.38 |

NOZZLE MOUNTING DIMENSIONS PER AAR FIG. E21 A

"C" = 7.187±.005" DIA
 "D" = 6 15/32" DIA. MIN., 6 17/32" DIA. MAX.
 WITH OUT-OF-ROUNDNESS NOT TO EXCEED THESE DIAMETERS.
 "E" = (8)-3/4" DIA HOLES ON 10 1/4" DIA BOLT CIRCLE.
 "F" = 1/4"

VALVE MOUNTING DIMENSIONS

"C" = 7.200/7.194" DIA
 "D" = 6.370±.005" DIA
 "E" = (8)-3/4" DIA HOLES ON 10 1/4" DIA BOLT CIRCLE.
 "F" = .31±.015"

June 21, 2021