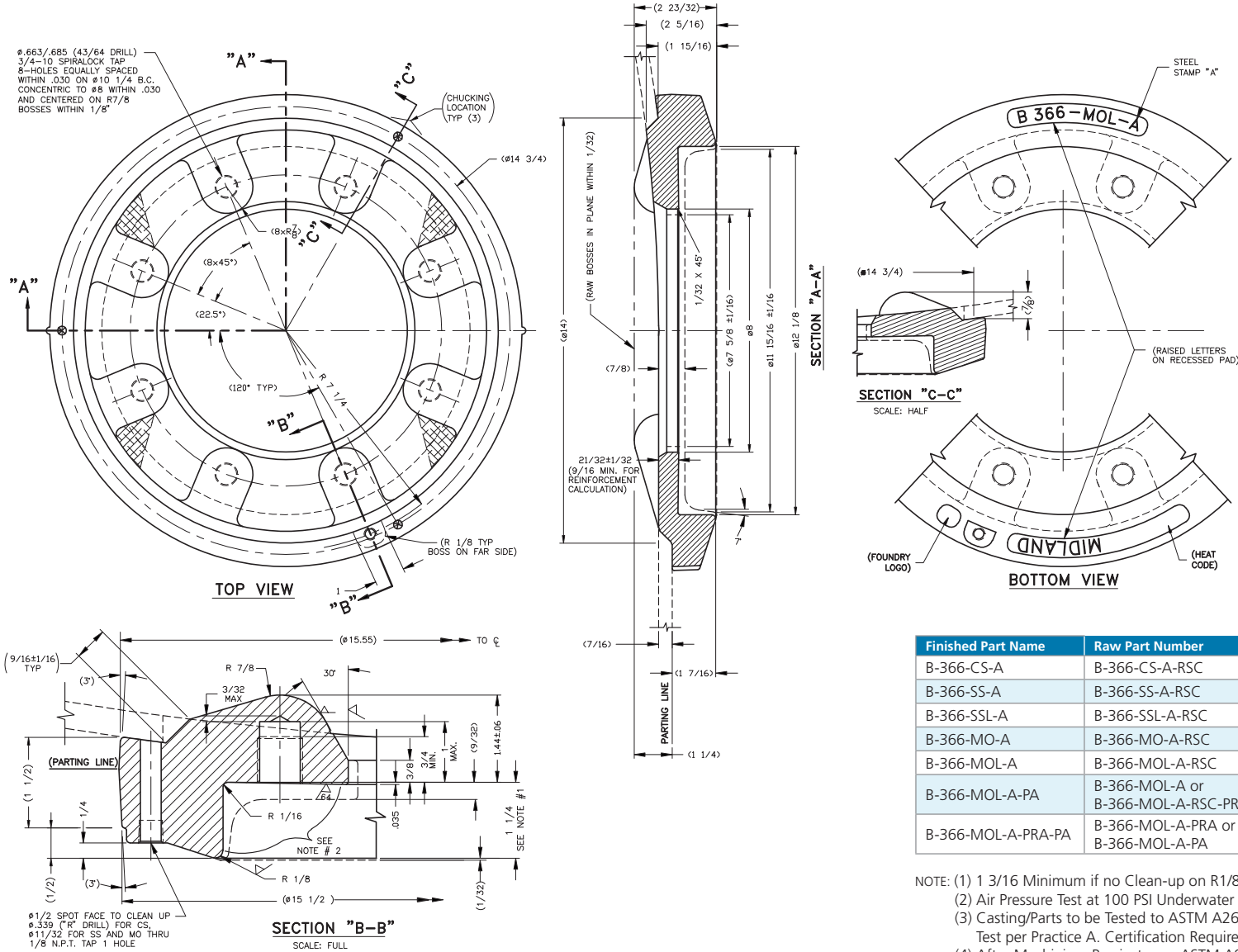


B-366-XX-A

6" Bottom Outlet Valve Saddle



Finished Part Name	Raw Part Number	Material	Notes
B-366-CS-A	B-366-CS-A-RSC	AAR M201B 0.30C Max.	
B-366-SS-A	B-366-SS-A-RSC	ASTM A743 CF 8 (Type 304 SS)	
B-366-SSL-A	B-366-SSL-A-RSC	ASTM A743 CF 3 (Type 304 L)	
B-366-MO-A	B-366-MO-A-RSC	ASTM A743 CF 8M (Type 316)	
B-366-MOL-A	B-366-MOL-A-RSC	ASTM A743 CF 3M (Type 316 L)	4, 5
B-366-MOL-A-PA	B-366-MOL-A or B-366-MOL-A-RSC-PRA	ASTM A743 CF 3M (Type 316 L)	3, 5
B-366-MOL-A-PRA-PA	B-366-MOL-A-PRA or B-366-MOL-A-PA	ASTM A743 CF 3M (Type 316 L)	3, 4, 5

- NOTE: (1) 1 3/16 Minimum if no Clean-up on R1/8.
 (2) Air Pressure Test at 100 PSI Underwater for (2) Minutes this Area. No Leakage Allowed.
 (3) Casting/Parts to be Tested to ASTM A262 Practice B Acceptance, with a Rapid Screening Test per Practice A. Certification Required.
 (4) After Machining, Passivate per ASTM A967 & Test per ASTM A380. Certificate Required.
 (5) Ship in a Plastic Bag with Dissacant.