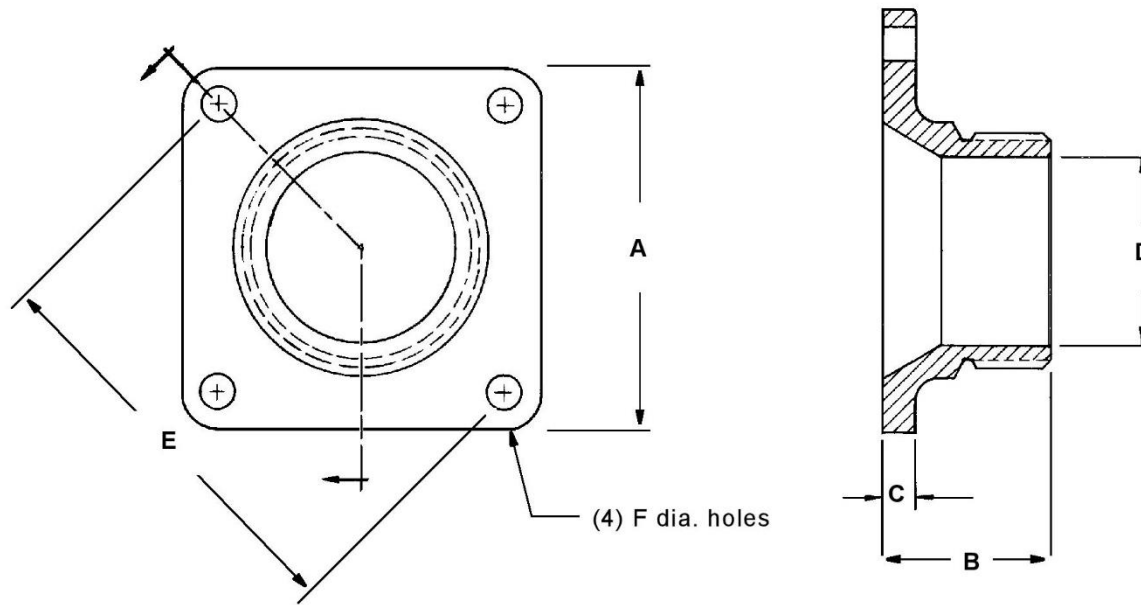


63 Through 78 Series
Outlet Leg Nozzles
August 10, 2015



THREAD	DIMENSIONS						PART NUMBERS				APPLICATION
	"A" SQ. or DIA.	"B"	"C"	"D"	"E"	"F"	IRON PART NO.	STEEL PART NO.	18-8-SS PART NO.	316 SS PART NO.	
2 NPT	7 1/2 DIA.	4 3/8	11/16	2 1/16	6	3/4	-	63 - CS	63 - SS	63 - MO	UTC-78672-02
5 1/4 - 4 NS	6 3/4 SQ.	3 3/4	3/4	4 1/4	7 3/4	11/16	64 - DI	-	64 - SS	64 - MO	UTC, TRINITY, MIDLAND
5 1/4 - 4 NS	8 SQ.	3 3/4	3/4	4 1/4	9	3/4	65 - DI	-	65 - SS	65 - MO	J 4" AND 6"
5 1/4 - 4 NS	10 1/2 DIA.	3 3/4	3/4	4 1/4	9	7/8	651 - MI	651 - CS	651 - SS	651 - MO	-
5 1/4 - 4 NS	8 3/8 SQ.	3 3/4	3/4	4 1/4	9 1/2	7/8	66 - DI	66 - CS	66 - SS	66 - MO	A-560, A-567
6 NPSM	10 1/2 SQ.	3 1/4	3/4	6	9	3/4	-	-	67 - SS	67 - MO	A-547
5 1/4 - 4 NS	11 DIA.	3 3/4	3/4	4 1/4	9 & 9 1/2	3/4 & 7/8	68 - DI	68 - CS	68 - SS	68 - MO	A-547, A-560, A-567
6 ACME (MOD)	8 SQ.	3 5/8	1	4	9	3/4	-	-	69 - 1 - CN	-	CIL
5 1/4 - 4 NS	5 3/4 SQ.	3 3/4	3/4	4 1/4	6 1/2	5/8	-	76 - CS	76 - SS	76 - MO	K-2007 ACF
5 1/4 - 4 NS	5 3/4 SQ.	13 1/4	3/4	4 1/4	6 1/2	5/8	-	761 - CS	761 - SS	761 - MO	K-2007 ACF
5 1/4 - 4 NS	5 3/4 SQ.	3 3/4	3/4	4 1/4	6	5/8	-	77 - CS	-	-	J-6RIB3
5 1/4 - 4 NS	5 3/4 SQ.	3 3/4	3/4	4 1/4	6 3/8	3/4	-	78 - CS	78 - SS	-	J-5REB3