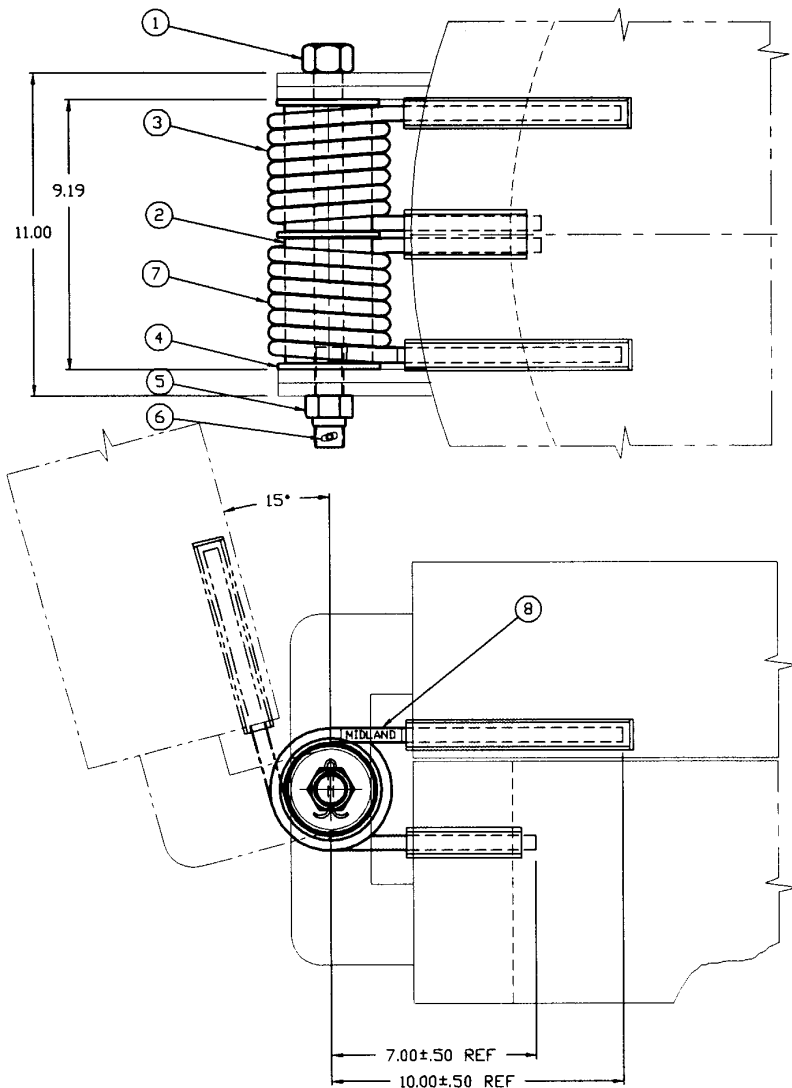


© 2002 Midland Manufacturing Corp.

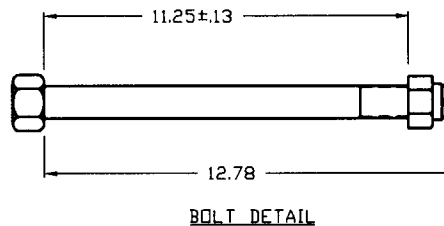
All designs subject to change without notice. Installation dimensions and mounting arrangements are for general information. Certified drawings are available upon request.



ITEM	PART NAME	QTY	B-319-SS		B-319-CS	
			PART NR	MATERIAL	PART NR	MATERIAL
1	HINGE BOLT	1	306-18-SS ⁽¹⁾	STAINLESS	306-18-CS ⁽¹⁾	CARBON STEEL
2	BUSHING	2	303-2-SS	STAINLESS	303-2-CS	CARBON STEEL
3	SPRING R.H.	1	318-3-SS	STAINLESS	318-3-CS	ALLOY STEEL
4	WASHER	3	303-4-SS	STAINLESS	303-4-CS	CARBON STEEL
5	LOCKNUT	1	303-5-SS	STAINLESS	303-5-CS	CARBON STEEL
6	COTTER PIN	1	303-6-SS	STAINLESS	303-6-SS	STAINLESS
7	SPRING L.H.	1	318-33-SS	STAINLESS	318-33-CS	ALLOY STEEL
8	NAMEPLATE	2	303-32-PS	PLASTIC	303-32-PS	PLASTIC

NOTES:

1. ASSIST IS 60 LBS @ 46"
2. -CS PARTS ARE BLACK POLYESTER COATED OR PLATED



TO PLACE AN ORDER, OR JUST ASK A QUESTION, CALL (847) 677 - 0333 OR FAX (847) 677 - 0138

REVISION 4.0

8/24/04