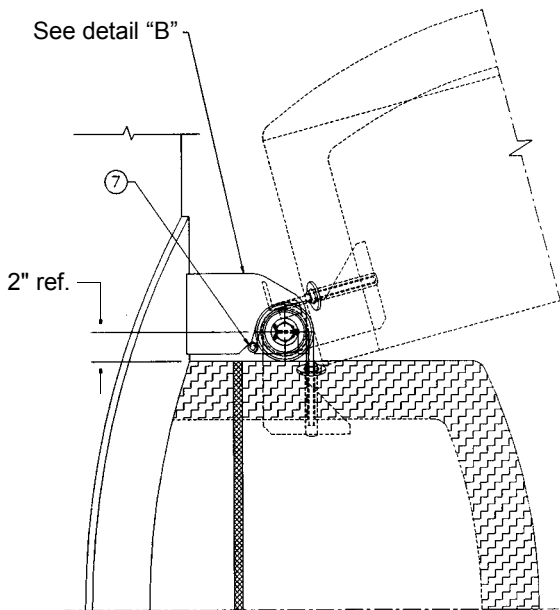
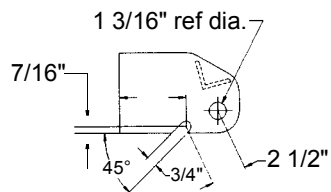


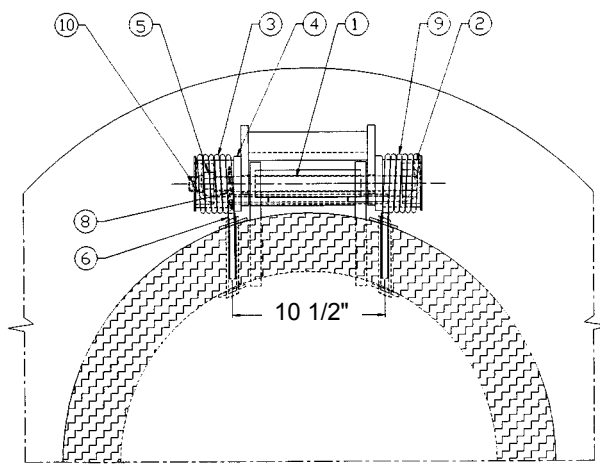
LIFTER ASSISTERS
FOR TRINITY ALUMINUM COVER

© 2002 Midland Manufacturing Corp.

All designs subject to change without notice. Installation dimensions and mounting arrangements are for general information. Certified drawings are available upon request.



ELEVATION VIEW



TOP VIEW

ITEM NO.	QTY.	PART NAME	PART NO.	MATERIAL
1	1	HINGE BOLT	306-15-CS	STEEL, PLATED
2	2	BUSHING	312-2-CS	STEEL, PAINTED
3	1	SPRING R.H.	312-3-CS	STEEL, PAINTED
4	2	WASHER	312-4-CS	STEEL, PAINTED
5	1	LOCKNUT	303-5-CS	STEEL, PLATED
6	2	SLEEVE	312-6-TF	TEFLON
7	1	TUBE	312-7-CS	STEEL, PAINTED
8	1	NAMEPLATE	308-32A-PS	PLASTIC
	1		312-32B-PS	
9	1	SPRING L.H.	312-9-CS	STEEL, PAINTED
10	1	COTTER PIN	303-6-SS	STAINLESS STEEL

ASSEMBLE SEQUENCE

1. Assemble spring, tube washers, bushings and pin with cover in open position.
2. Close cover to test lift assist.



TO PLACE AN ORDER, OR JUST ASK A QUESTION, CALL (847) 677 - 0333 OR FAX (847) 677 - 0138

REVISION 4.0

7/1/98