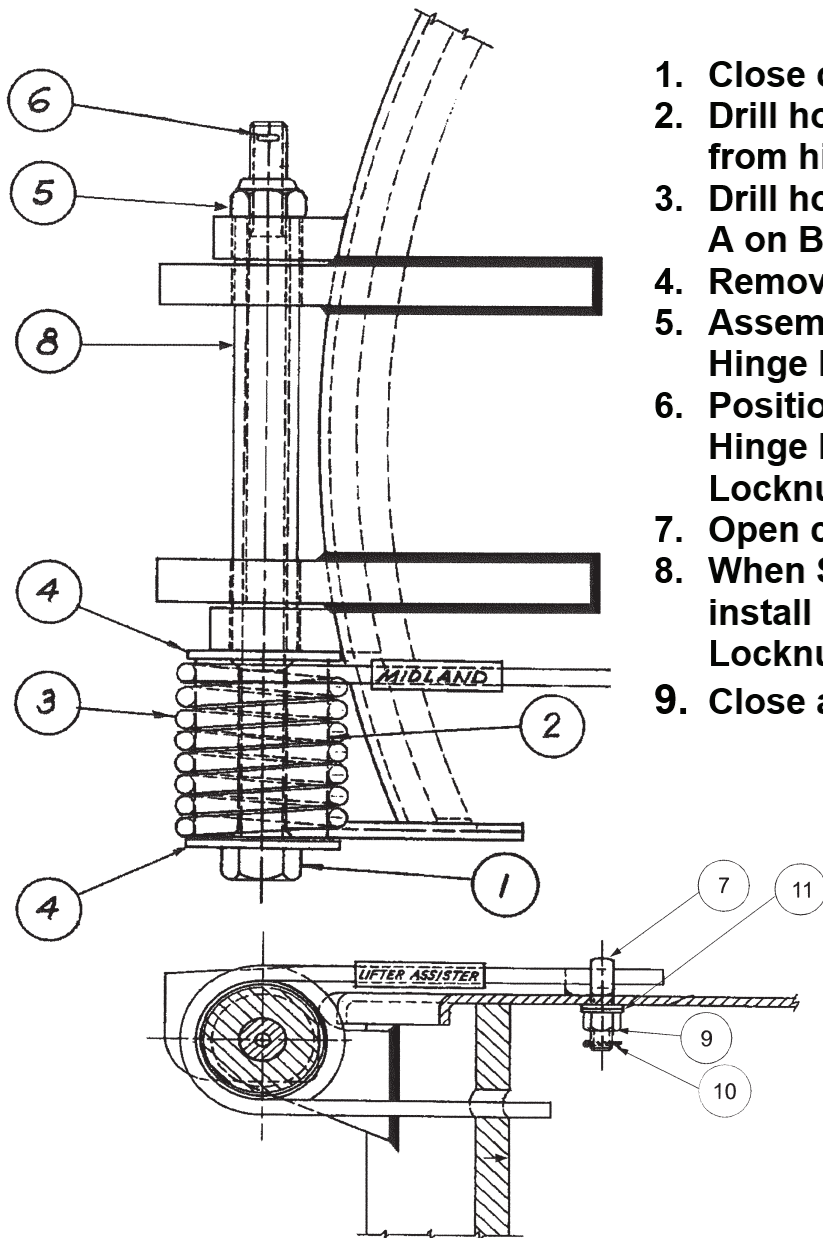


B-302, B-303 Lifter Assister -- Assembly Procedure Steps



1. Close cover.
2. Drill hole in housing cover for eyebolt for longer Spring end at 8 ½" from hinge centerline (see top view on B-302/B-303 drawing).
3. Drill hole in housing for shorter Spring end (see top view and section A-A on B-302/B-303 drawing).
4. Remove existing hinge bolt assembly.
5. Assemble Washer #4, Bushing #2, Spring #3 and another Washer #4 on Hinge Bolt #1.
6. Position shorter Spring end in hole drilled in housing in step #3. Insert Hinge Bolt assembly thru hinge until it stops against hinge. Install Locknut #5 and Cotter pin #6.
7. Open cover about 120° and secure.
8. When Spring is in free position, slip Eyebolt #7 on longer Spring end and install it into drilled hole in cover (see step #2). Install Washer #11, Locknut #9 and Cotter pin # 10.
9. Close and open cover to test operation.



January 14, 2015