

OPW

FUELING COMPONENTS

A DOVER RESOURCES COMPANY
P.O. Box 405003 • Cincinnati, Ohio 45240-5003
(513)870-3213 • (800)422-2525 (Orders Only)
(513)870-3100 (Other Calls)



INSTALLATION INSTRUCTIONS

H-12134-M
August, 1992
Rev. Feb., 1993

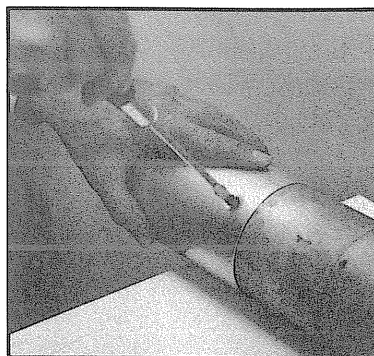
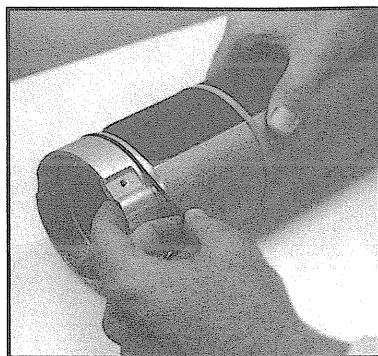
OPW 61SO Overfill Prevention Valve Instruction Sheet Supplement

Important: Read and follow the assembly and installation instruction booklet for the OPW 61SO completely and carefully before installing your overfill prevention valve.

All steps for installing the OPW 61SO are the same as the supplied instruction booklet until installing the lower tube. At this step,

substitute this instruction sheet. After the lower tube is installed, return to the main instruction booklet and proceed with the installation.

Please note that the lower o-ring has already been installed in the groove of the lower body.



Step 10 Install Lower Tube with O-Ring

Generously apply grease to the lower tube o-ring already installed in the groove located on the bottom end of the valve body. Next, file a chamfer of the inside edge of the drilled and dimpled end of the lower tube. This will act as a lead for the o-ring and lower tube assembly.

Aligning the (3) dimpled holes with the tapped holes in the body, carefully push the valve body into the lower tube.

Install the flathead screws into the dimpled holes and tighten securely. Use only the stainless steel screws supplied with the kit. The screw heads must be flush with or below the outside surface of the lower tube.

PRODUCT WARRANTY

All OPW parts and products are thoroughly inspected and tested from the time raw material is received at our plant until the product is completed. We guarantee that all products are free from defects in materials and workmanship for a period of one year from the date of purchase. Any products that may prove defective within that one year period will, at OPW's option, be promptly repaired or replaced or credit given for future orders. This warranty shall not apply to any product which has been altered in any way, which has been repaired by any party other than an authorized OPW service representative or when such failure is due to misuse or conditions of use. OPW shall have no liability for special or consequential damages to any party, and shall have no liability for labor costs, freight costs or any other cost or charges in excess of the amount of the invoice for the products.

THIS WARRANTY IS IN LIEU OF ALL OTHER WARRANTIES, EXPRESSED OR IMPLIED, AND SPECIFICALLY THE WARRANTIES OF MERCHANTABILITY AND FITNESS FOR A PARTICULAR PURPOSE, THERE ARE NO WARRANTIES WHICH EXTEND BEYOND THE DESCRIPTION OF THE FACE HEREOF.

WARNING: OPW products should be used in compliance with applicable federal state and local laws and regulations. Product selection should be based on physical specifications and limitations and compatibility with the environment and material to be handled. OPW reserves the right to change specifications at any time without incurring obligations.