

CivaStar™ ROMLink™ 2-Wire Optic “Plug-N-Load” Sensor



Optic overfill sensors detect the presence of liquid at a preset level. The Civacon CivaStar™ Sensor combines all the enhanced design features and more with the “Plug-N-Load” convenience of our ROMLink System.



Assured Reliability.

CivaStar’s advanced design, construction and unique LED visual-verification feature optimizes probe reliability and permissive readings at the loading rack so your trucks get loaded on time and your customers get their deliveries on schedule.



Lighting The Way.

Save time and money tracking down the source of non-permissive readings. CivaStar features a unique LED light in the tip of the probe to provide immediate visual verification and diagnostics of non-permissive probe readings.

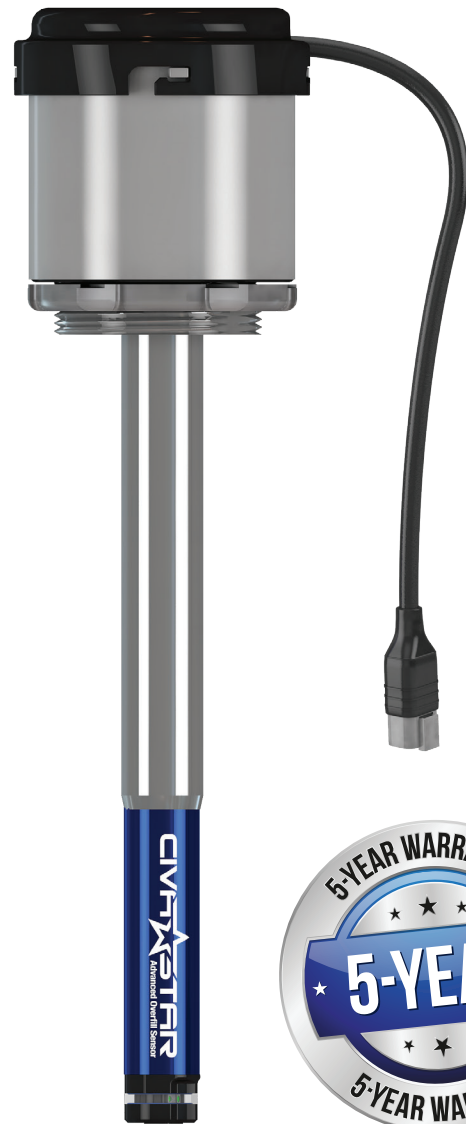


You’re Set Forever.

Set it and forget it. The specially engineered replaceable optic sensor head provides for reliable liquid detection and trouble-free installation or replacement without the need to ever reset probe heights.

Specifications

- Available in 2-wire configuration
- Cap O-ring Seal - Silicone
- Locking Nut - Plated Steel
- Viscosity - Less than 1000 SSU Prism
- Weight 0.521 kg (1.15 lbs.)
- Operating Temperature 40°C (-40°F) to 70°C (158°F)
- Special length sensors are available upon request

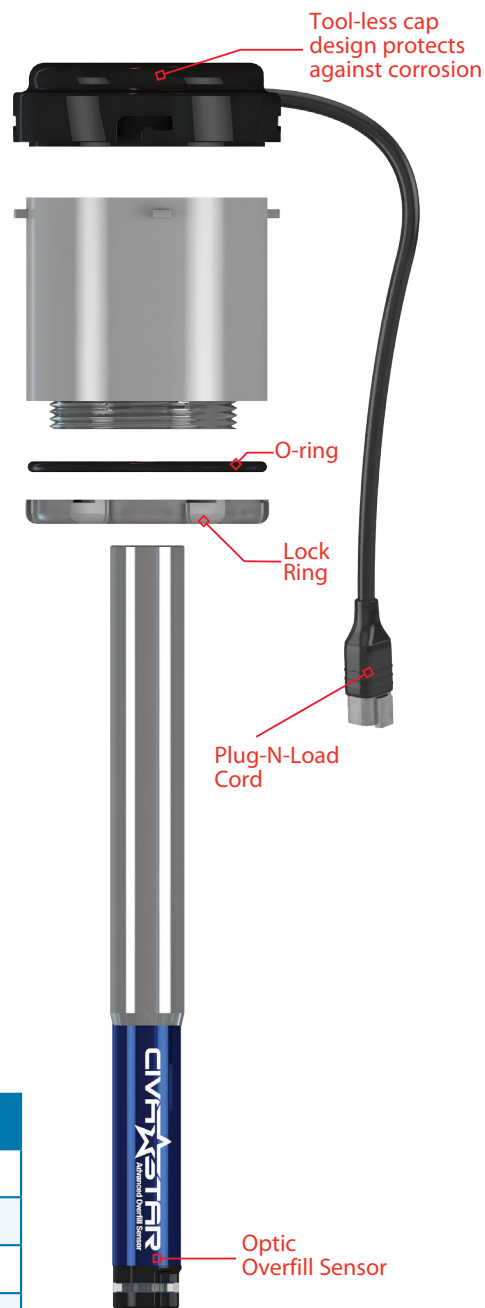


CivaStar™ ROMLink™ 2-Wire Optic “Plug-N-Load” Sensor



CivaStar goes beyond overfill prevention. Real-time diagnostics keep your trucks on the road and delivering loads, something the competition can't deliver.

Feature	Benefit	CivaStar	Other
Detects the presence of a liquid	Provides overfill protection	Yes	Yes
5-year warranty	Peace of mind	Yes	Yes
LED diagnostics	Eliminates time-consuming and expensive guesswork	Yes	No
Tool-less cap	Quick removal and protects against corrosion	Yes	No
Tool-less spring adjustment	Set length once with torsion spring	Yes	No
Sensor replacement	Rapidly swap sensor without removing tube	Yes	No



Ordering Specifications & Cross-Reference

Upgrading to the CivaStar ROMLink requires the purchase of the New CivaStar Probe with Housing

The CivaStar Probe is not a direct replacement when upgrading from the current ROMLink Probe.

CivaStar ROMLink Probe with Housing Part Numbers

CivaStar ROMLink Sensor Part#	Old-Style ROMLink Sensor Part#
5610RL-7	1554-007B
5610RL-12	1554-0012B
5610RL-14	1554-0014B
5610RL-18	1554-0018B

CivaStar ROMLink Replacement Cap Part Numbers

ROMLink Repl. Sensor Part#	Old-Style ROMLink Sensor Part#
STK-007B	5356-2W-7
STK-0012B	5356-2W-12
STK-0014B	5356-2W-14
STK-0018B	5356-2W-18

CivaStar ROMLink Replacement Probe Part Numbers

CivaStar ROMLink Sensor Part#
5650RL-7
5650RL-12
5650RL-14
5650RL-18