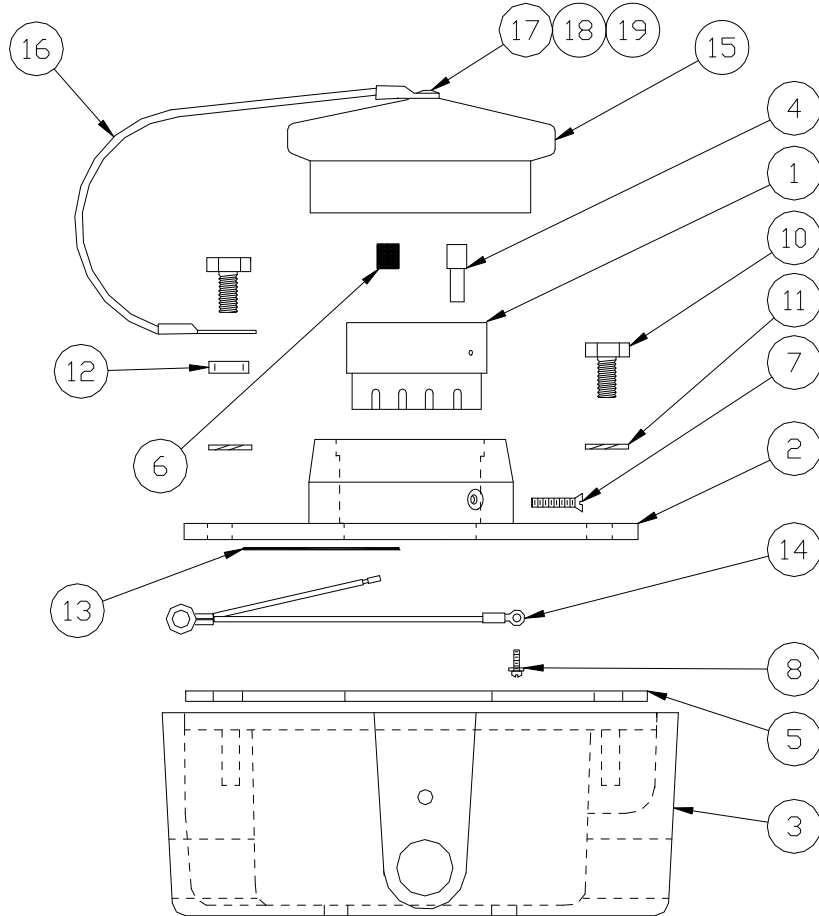
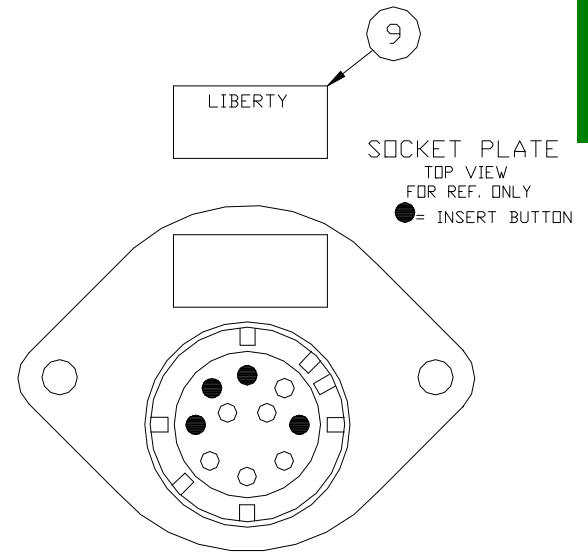




## 4200-4200 Optic Pattern w/ Thermistor Face Plate



**OBSOLETE**  
**See Part Number 4201-4201**  
**Replacement Parts Available**



PARTS BREAK DOWN

ITEM	PART NUMBER	DESCRIPTION	QTY.
1	C40011M <sup>2</sup>	CONTACT BLOCK	1
2	D40104AH <sup>2</sup>	FACEPLATE, THERMISTOR	1
3	D40100A	BODY	1
4	H50616M <sup>2</sup>	CONTACT, BUTTON	6
5	H50064M <sup>2</sup>	GASKET	1
6	H50617M <sup>2</sup>	INSERT	4
7	H50074M <sup>2</sup>	SCREW, #6-32 1/2"	1
8	H50623M-2 <sup>2</sup>	SCREW, #6-32 3/8"	1
9	H50148M <sup>2</sup>	NAME PLATE	1
10	H50108M <sup>2</sup>	SCREW, 5/16-18 3/4"	2
11	H50250M <sup>2</sup>	WASHER, 5/16 SS	2
12	H50291M <sup>2</sup>	SPACER	1

ITEM	PART NUMBER	DESCRIPTION	QTY.
13	C51503M <sup>2</sup>	LABEL, TECH ASSISTANCE	1
14	H50618M <sup>2</sup>	GROUND WIRE	1
15	H50025M <sup>1,2</sup>	DUST CAP, BLUE	1
16	H50288M <sup>1,2</sup>	CABLE	1
17	H50290M <sup>1,2</sup>	RIVET	1
18	H50292M <sup>1,2</sup>	WASHER	1
19	H50293M <sup>1,2</sup>	LOGO WASHER	1

REPAIR KITS	
4150-4150	DUST CAP
4210-4210	FACE PLATE KIT

1 - Included in 4150-4150, 2 - Included in 4210-4210