



High Flow Emergency Valves

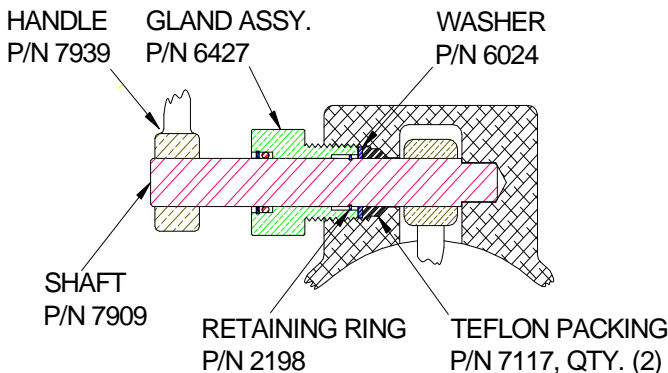
Rev. +, Feb 2010

Civacon's Universal High Flow Emergency Valves are designed to be used for Mechanical Trailer Operations

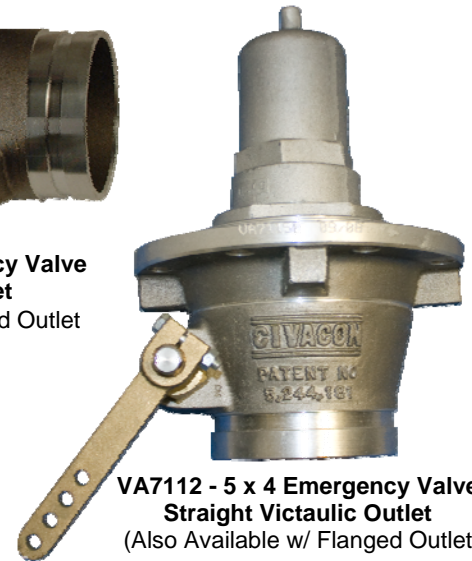
The Civacon™ Universal Series High Flow Emergency Valves have been designed with no moving parts in the flow path for superior flow rates, faster drops and maximum profits. Castings have been streamlined for all configurations to decrease weight, improve flow and fit easier into those tight installations.

Universal High Flow Emergency Valves conform with HM183 standards. The Universal High Flow Emergency Valve has been field tested in harsh environments and will withstand temperatures from -40°F to 150°F (-40°C to 66°C).

All Emergency Valves feature a frangible connection at the shear groove. This durable, open-bore design reduces loading, unloading and maintenance time so Civacon™ equipped trucks spend more time on the road.



**VA5112 - 5 x 4 Emergency Valve
90° Victaulic Outlet**
(Also Available w/ Flanged Outlet)



**VA7112 - 5 x 4 Emergency Valve
Straight Victaulic Outlet**
(Also Available w/ Flanged Outlet)

Features and Benefits

- Compatible with 4" TTMA sump applications
- Compatible with all manufacturer's standard mechanical operators
- Reduces backflow problems into adjacent compartments on manifold discharge plumbing
- Optional drain screen and cable mounting bracket (Sold Separately)
- Optional slotted mounting holes simplify installation
- Aluminum housing with a choice of seal materials
- Available as a 5" x 4" elbow or straight with Victaulic or flanged outlets.
- Compatible with diesel, biodiesel, gasoline, ethanol and methanol
- Available in a variety of configurations for standard compatibility and easy installation (see chart on back)

High Flow Emergency Valves

Product Specifications

Product Number

VA5112 (Shown)

Dimensions:

Height - 14.25"

Width - 10.36"

Materials:

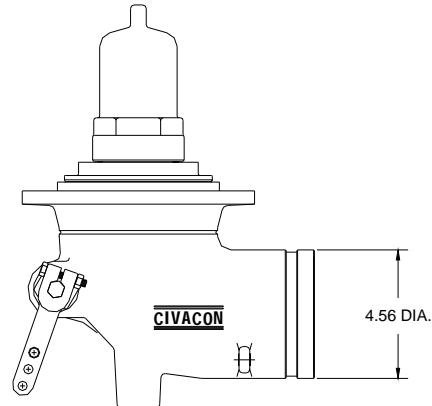
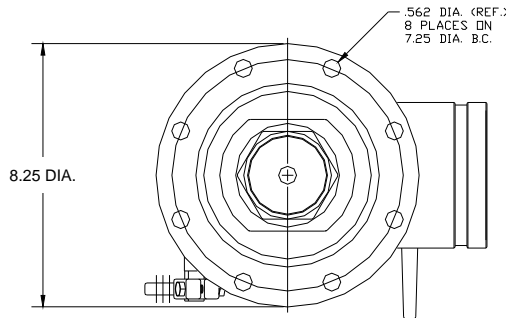
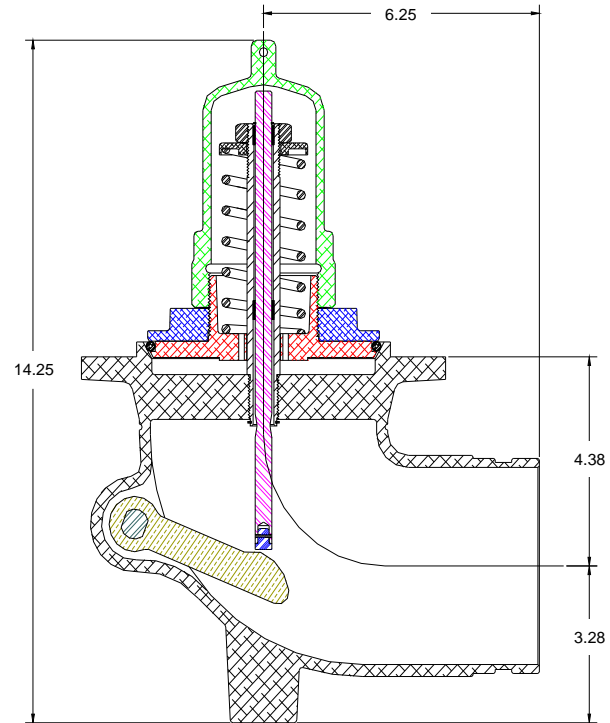
Aluminum, Brass, and Stainless Steel

Weight:

11.2 lbs. (5.08 kg)

Temp. Range:

-40°F to 150°F (-40°C to 66°C)



Universal High Flow Emergency Valve Ordering Information

TYPE	CODE	BODY	CODE	OPERATION	CODE	SEAL
VA	51	90° Elbow/Victaulic	1	Mechanical	1	Viton*
VA	61	90° Elbow/Flanged	1	Mechanical	2	Tef-o-Sil
VA	71	Straight/Victaulic	1	Mechanical	3	Kalrez*
VA	81	Straight/Flanged	1	Mechanical	4	Nitrile*

Approximate weights: VA51XX and VA61XX = 11.20 lbs.

VA71XX and VA81XX = 8.95 lbs.

* Special Order Items; Please contact Civacon for availability



PHONE: (816) 741-6600 • (888) 526-5657 • Fax: (816) 741-1061
4304 Mattox Road • Kansas City, MO 64150 • www.civacon.com