



3" Air Operated Emergency Valve

Meet the demand of today's fuel delivery tank trucks with compact, high-performing Internal Air Operated Emergency Valves from Civacon.

The VA1050 3" Emergency Valve is specifically engineered to allow greater flexibility of tank truck design and assembly. The internal air operation cylinder allows maximum utilization of under tank chassis space while the "bellowed body" profile allows higher flow rates when unloading, and lower pressure drop when at the loading rack.

The VA1050 is purposely designed for fuel oil, lube oil and heating oil delivery trucks. Civacon, the name to depend on for innovation and reliable performance.



Features

- 3" TTMA compact elbow design for greater flexibility of tank truck design
- 3" Victaulic pipe connection for close proximity pipe work runs
- Internal air cylinder allows for simpler air pipe runs - no external linkage
- Pneumatic actuation can be "single acting" or "sequential" to confirm the position of the valve
- Slotted tank flange to ease installation
- Viton seals for product compatibility
- Air cylinder rated to -40° F to 150° F (-40° C to 66° C)
- External shear groove to TTMA specifications
- Low pressure drop for higher flow rates
- Light weight and robust aluminum and stainless steel construction for long service life
- Quick strip for easy maintenance
- Manual override feature included
- Mesh filter screen is available as an option

3" Air Operated Emergency Valve

Ordering Specifications

3" Air Operated Emergency Valve

VA1050 3" Internal Valve, Air Operated, Victaulic, Viton Seals

VA1051 3" Internal Valve, Air Operated, Victaulic, Viton Seals w/ Screen

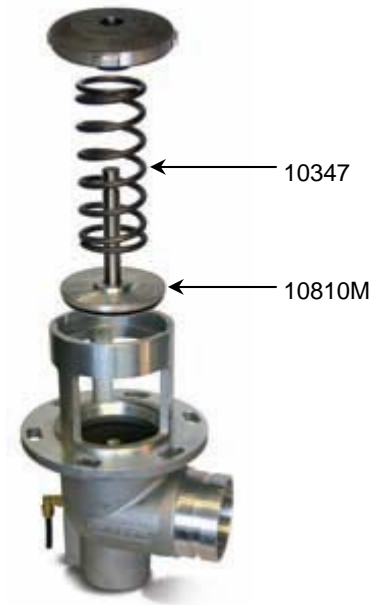
VA2050 3" Internal Valve, Air Operated, Flanged Outlet, Viton Seals

VA2051 3" Internal Valve, Air Operated, Flanged Outlet, Viton Seals w/ Screen

Replacement Parts

10810M Poppet Sub-Assembly

10347 Spring



Product Specifications

Product Number

VA1050

Dimensions:

Height - 12.3"

Width - 8.13"

Materials:

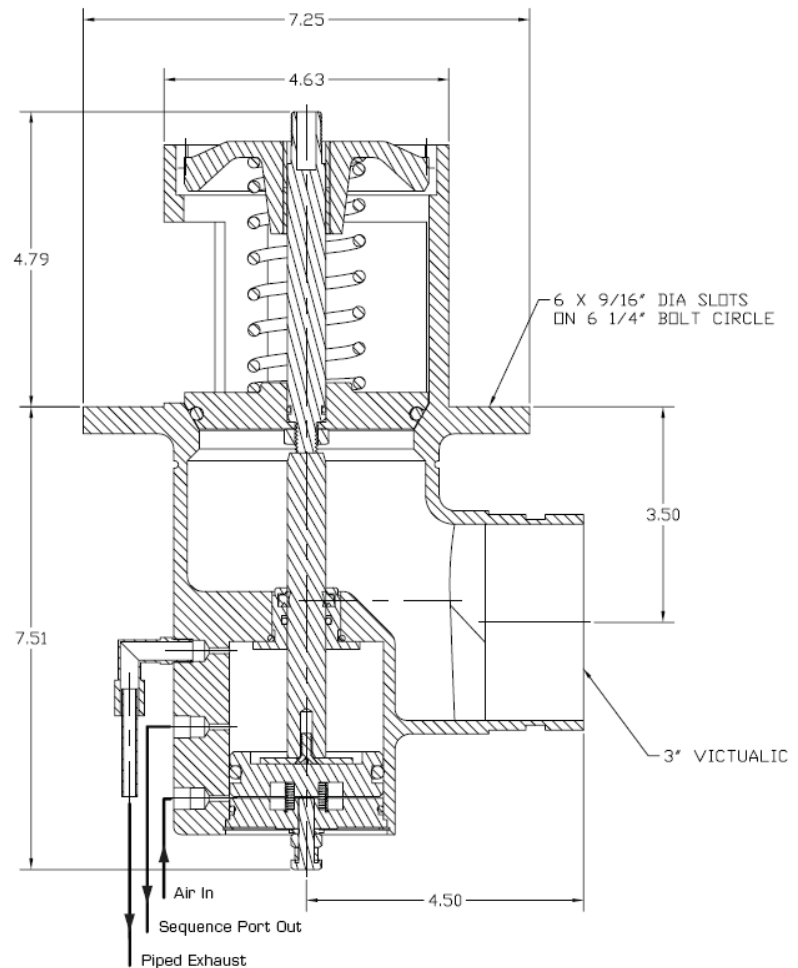
Aluminum and Stainless Steel

Weight:

7 lbs. (3.175 kg)

Temp. Range:

-40°F to 150°F (-40°C to 66°C)



PHONE: (816) 741-6600 • (888) 526-5657 • Fax: (816) 741-1061
4304 Mattox Road • Kansas City, MO 64150 • www.civacon.com