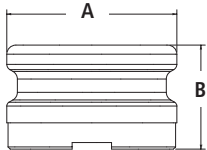


OPW Tight-Fill Top-Seal Adaptors

Tight-Fill Top-Seal Adaptors are installed in spill-containment manholes on the fill riser pipe from an underground fuel-storage tank. They mate with the gravity-drop delivery elbow on the transport truck.



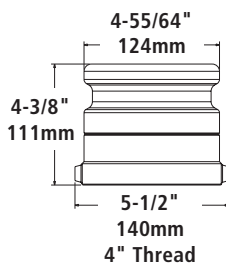
633T-8076



61SALP-1020-EVR



61SALP-MA
E85 EVR Approved



OPW 633T

OPW 633T Top-Seal Adaptors thread onto the fill pipe of underground storage tanks, and are designed to mate with top-seal delivery elbows. Use OPW 634TT, 634TE or 634TTP Top-Seal Caps with 633T Adaptors.

Features

- ◆ **Easy Installation** – integral internal wrenching lugs are provided for installing in the confined space of spill-containers
- ◆ **Accommodate 633LC Lock Clamp** – 4"x 4" 633T (E) models incorporate dual notches in the base to accept 633LC clamps
- ◆ **Manufactured from Durable, Corrosion-Resistant Materials** – bronze and hard-coat aluminum

Ordering Specifications

Product #	Elbow Size	Riser Thread	A		B		Weight		Material
			in.	mm	in.	mm	lbs.	kg	
633T-8060	3"	3"	3 ¹⁹ / ₃₂	93	1 ⁵ / ₈	43	0.96	.44	Bronze
633T-8070*	3"	4"	3 ¹⁹ / ₃₂	93	2 ¹¹ / ₁₆	69	0.71	.32	Hardcoated Al.
633T-8075*	4"	4"	4 ⁵⁵ / ₆₄	124	2 ³¹ / ₃₂	76	0.82	.37	Hardcoated Al.
633T-8076	4"	4"	4 ⁵⁵ / ₆₄	124	2 ³¹ / ₃₂	76	2.70	1.23	Bronze

Note: Maximum height of adaptor is 2¹¹/₁₆" (68mm).

* DEF-compatible

Replacement Parts

Part #	Description
H05289M	Gasket
H09039M	Gasket
H09039M	Gasket
H09039M	Gasket

OPW 61SA Swivel Adaptor

Pressure-decay testing of underground storage tank systems has identified the joint between the tight-fill adaptor and the nipple or tank riser as a persistent leak point. Considerable movement takes place along the hose while the fill elbow is connected. Walk-downs and changes from one compartment to another move the hose across the pavement, rotating the elbow along with it. The result can be a loosening of the adaptor. As the adaptor backs off, the seal between it and the nipple is relaxed and a leak path is created allowing vapors to escape to the atmosphere. Vacuum-assist dispensing systems can aggravate this situation due to the slight pressurization of the UST.

The 61SA Swivel Adaptor mates with 4" top-seal delivery elbows and features a top section that rotates with hose movement while the bottom section remains securely in place maintaining seal integrity.

Features

- ◆ **Dual Seals** – ensure a vapor and liquid-tight seal
- ◆ **Conductive, Self-Lubricating Retaining Rod** – ensures maintenance-free, reliable service life
- ◆ **Same Internal Dimension as Standard 633T Adaptors** – to minimize pressure drop and maximize flow rates for quick product delivery
- ◆ **61SALP-MA – EVR Approved for E85**

Ordering Specifications

Product #	Base Material	Adaptor Material	Weight lbs.	kg
61SALP-1020-EVR*	Bronze	Bronze	7.1	3.2
61SALP-MA	Nickel	Nickel	7.1	3.2
61SA-TOOL**	Wrench		11.0	5.0
H09039M	Replacement Gasket			

*Low-Profile Fill Adaptor **See description on page 104.

Materials

Retaining Ring: Conductive nylon
Set Screws: Stainless-steel
Seals: Buna-N

Listings and Certifications



61SALP-MA are EVR Approved for E85
USA Patent No. 5,664,951

