

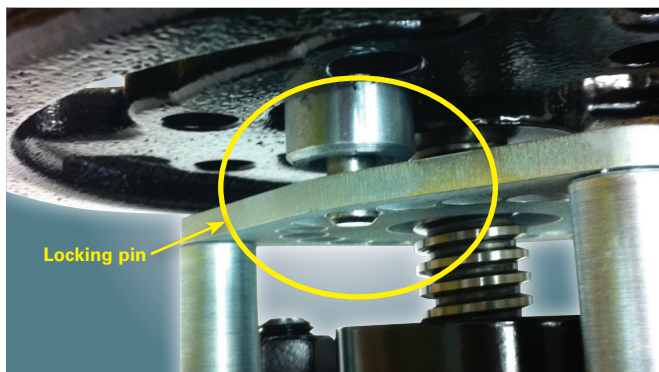
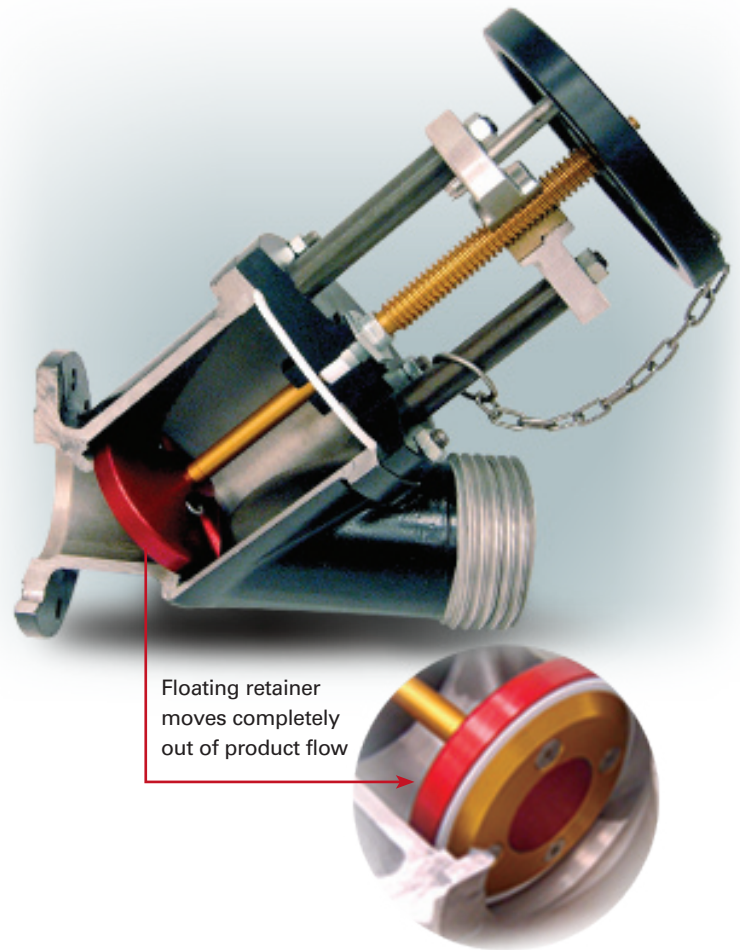


P-7040 Y-Pattern Valve for Loading and Unloading Service

High-performance Midland Y-Pattern Valve designed with improved flow for reliable long-life service

Midland Manufacturing has been providing tank-car valves and fittings for the safe loading, transportation and unloading of a wide variety of commodities for 60 years. As the leading manufacturer of valves, actuators, gaging devices and other equipment for the railroad tank-car industry in North America and around the world, Midland has developed an extensive line of products for use in the industry. Our valves are utilized in a wide variety of services, including high-hazard services such as Chlorine, Anhydrous Ammonia and LPG. Midland's commitment to safety and quality ensures that tank cars shipped with Midland valves stay in service longer and are more easily maintained.

The P-7040 Y-Pattern Valve is the first valve in a series Midland is developing for the European market to expand our portfolio of high-quality valves for the global rail-transportation market. Midland's legacy of quality products starts with intuitive product development that answers the needs of the market and continues through Midland's innovative engineering-design process. Midland valves are developed utilizing the latest design techniques, including FMEA analysis, 3D modeling, FEA, CFD, Shock and Vibration testing and other Six Sigma processes.



Features & Benefits:

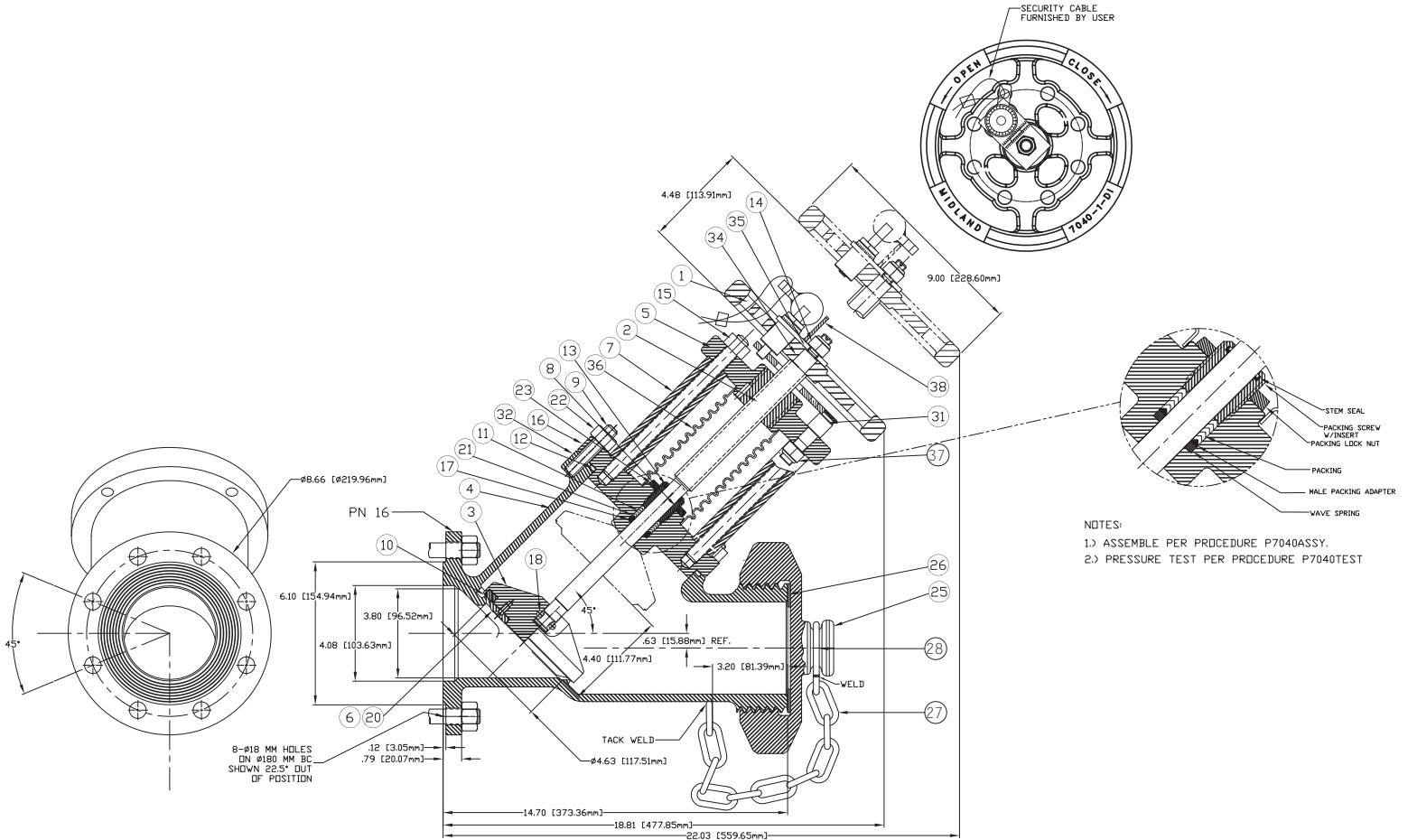
- 100mm opening
- Retainer moves completely out of product flow
 - Improved flow compared to the competition
 - Longer stem travel
 - Stem thread is outside of the product flow, eliminating issues with product seeping into the threads
- Proven soft-seat design
 - Floating retainer for more consistent seating
 - PTFE seat material with a stainless-steel seat-seal retainer for better corrosion resistance
- Stainless-steel components in wetted areas of the valve
- Optional improved locking mechanism to avoid accidental opening of the valve
- Available in:
 - Carbon Steel
 - Stainless Steel
 - With or without steam jacket
- TÜV certified for EN 12561 & EN 14432

P-7040 Y-Pattern Valve for Loading and Unloading Service

Ordering Specifications

ITEM	DESCRIPTION
1	HANDWHEEL
2	VALVE STEM
3	SEAL RETAINER
4	BODY AND STEAM JACKET
5	BONNET TOP PLATE ASSY
6	SEAL WASHER
7	BONNET POST
8	PACKING SCREW W/INSERT
9	STUD, M14 X 2
10	SEAT SEAL
11	PACKING V-RING
12	BONNET O-RING
13	WIPER
14	HANDWHEEL NUT
15A	BONNET THREADED ROD
15B	NUT, M16 X 2
16	BONNET BOTTOM PLATE
17	PACKING WAVE SPRING
18A	U-BOLT
18B	U-BOLT NUTS, M6 X 1
19	

ITEM	DESCRIPTION
20	SCREW M8 X 1.25
21	MALE PACKING ADAPTER
22	HEX NUT M14 X 2
23	PACKING LOCK NUT
24	
25	OUTLET CAP
26	OUTLET CAP GASKET
27	OUTLET CAP CHAIN
28	RING
29	
30	
31	LOCKING PLATE
32	NAMEPLATE
33	
34	KEY 3/16" SQ X 3/4" LG
35	FLAT WASHER
36	PROTECTIVE BELLOW
37	HEX NUT
38	PIN & BRACKET ASS'Y
39	PIN HANDLE



Learn more about stopping NARs. Go to midlandmfg.net and follow the link to <http://nar.aar.com>

PHONE: (847) 677-0333 • Fax: (847) 677-0138

7733 Gross Point Road • Skokie, IL 60077 • www.midlandmfg.net