

## B-612 Magnetic Gauging Device

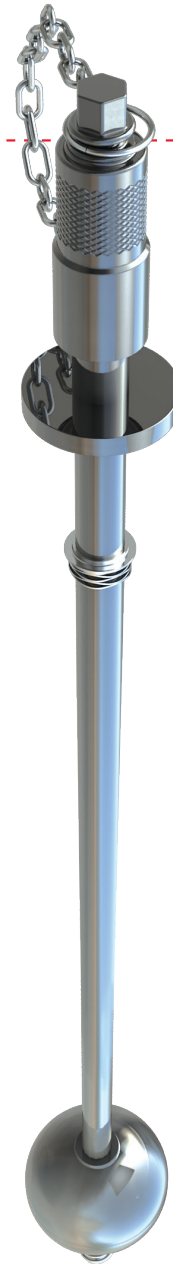
### The Industry Standard In Tank-Car Overfill Protection

The growing demand for rail shipments of crude oil, LPG and other condensates requires gauging equipment that is capable of providing accurate level monitoring to prevent overloading and ensure accurate load weights.

Midland's B-612 Magnetic Gauging Device offers superior component engineering to provide fast, easy and accurate level monitoring during commodity loading and unloading activities.

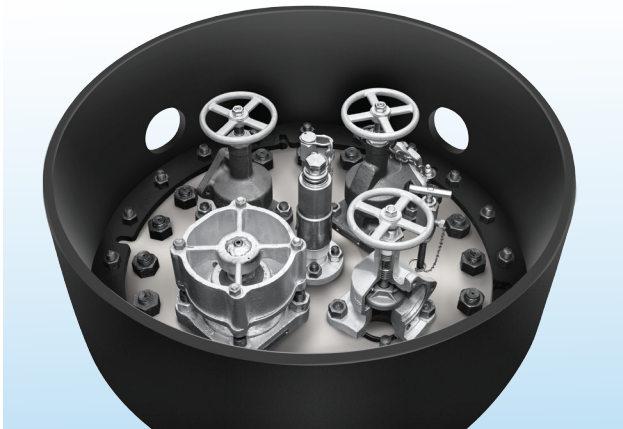
The B-612 Gauging Device features a graphite rod, stainless-steel guide tube, float and cap with zinc-plated flange, to ensure long-term corrosion resistance. Operationally, the lightweight float provides superior reliability and accuracy when handling commodities with a low specific gravity. The gauge rod is sealed within the guide tube, ensuring no exposure to the commodity.

Every Midland B-612 Magnetic Gauging Device is made-to-order according to length (metric or imperial) and to the scale calibration that is required for the specific transport application.



### Features and Benefits

- Stainless-steel guide tube, float, springs and cover
- Special sealed graphite gauge rod, resistant to permeation from Glycol solutions
- Top and bottom springs cushion surges
- Weather cap protects against outside elements
- Sealed guide tube keeps commodities enclosed



# B-612 Magnetic Gauging Device

## Specifications

- 48" or 60" level measurement
- Standard 3-1/4" bolt-circle flange
- Mounting flange 4-1/2" REF x 0.66" thick
- Four (4) 3/4" mounting holes on 3/4" B.C.

Interchangeable  
Graphite Rod, up  
to 3 scales on 1.  
Metric or Imperial

Vented Stainless-  
Steel Weather  
Cap with Chain

Stainless-Steel Spring

Mounting Options  
Available

Stainless-Steel Sealed  
Guide Tube

Visit our website for the following  
informative Product Literature

- Product Data Sheet
- Replacement Gauge Rod Forms
- Installation Manual

[www.midlandmfg.com](http://www.midlandmfg.com)

Stainless-Steel  
Spring

7.5" Stainless-Steel Float

Magnets