



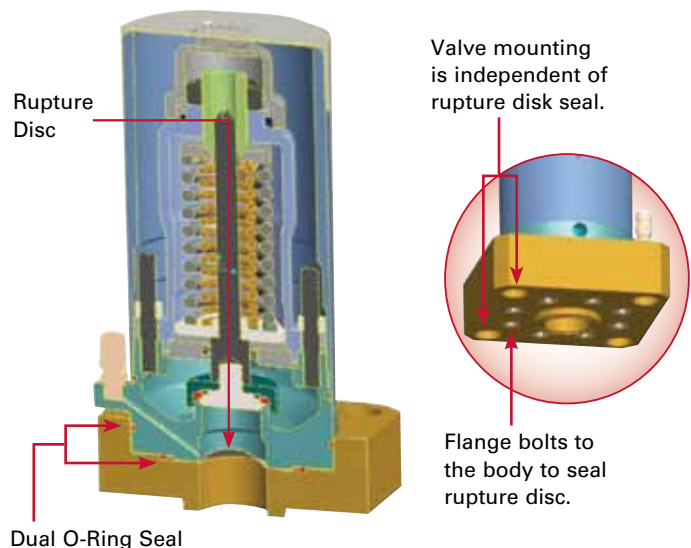
A-14377C-ML-VL Pressure Relief Valve

Corrosion-resistant pressure relief valve with improved sealing technology reduces the possibility of leaks due to improper application. Redundant sealing capability safeguards against potential leak paths promoting longer life and reliability in Chlorine transportation.

For more than 25 years, Midland has been providing the A-14377 combination device for Chlorine service. The Midland A-14377 has become the standard valve used by major shippers of Chlorine by rail and truck in North America. A-14377 Pressure Relief Valves are constructed of corrosion-resistant hastelloy C body material with hastelloy C and Monel™ trim to withstand the corrosive environment seen in Chlorine applications.

Utilizing more than 50 years of experience as the leading manufacturer of pressure relief valves for rail transportation, Midland has designed the A-14377C-ML-VL Pressure Relief Valve to provide redundant sealing capability and trouble-free application to the tank car. By incorporating the same proven triple-seal O-ring construction currently used in the A-713 Midland Chlorine valve and encompassing the rupture disc flange in a “cartridge” base, this enhanced valve will help to further decrease NARs for railcars in Chlorine service. The new “cartridge” design and additional O-rings will prevent any leakage from the rupture disc seal and reaching the atmosphere.

Because of Midland’s commitment to safety and quality, tank cars shipped with Midland valves stay in service longer and are more easily maintained. The unique new flange design for the rupture disc holder incorporates two additional O-rings to ensure better, easier seating during the assembly process. The new design also eliminates any chance of mis-alignment of the rupture disc flange and valve body during installation, making for a cleaner more secure connection to the tank car.



Features

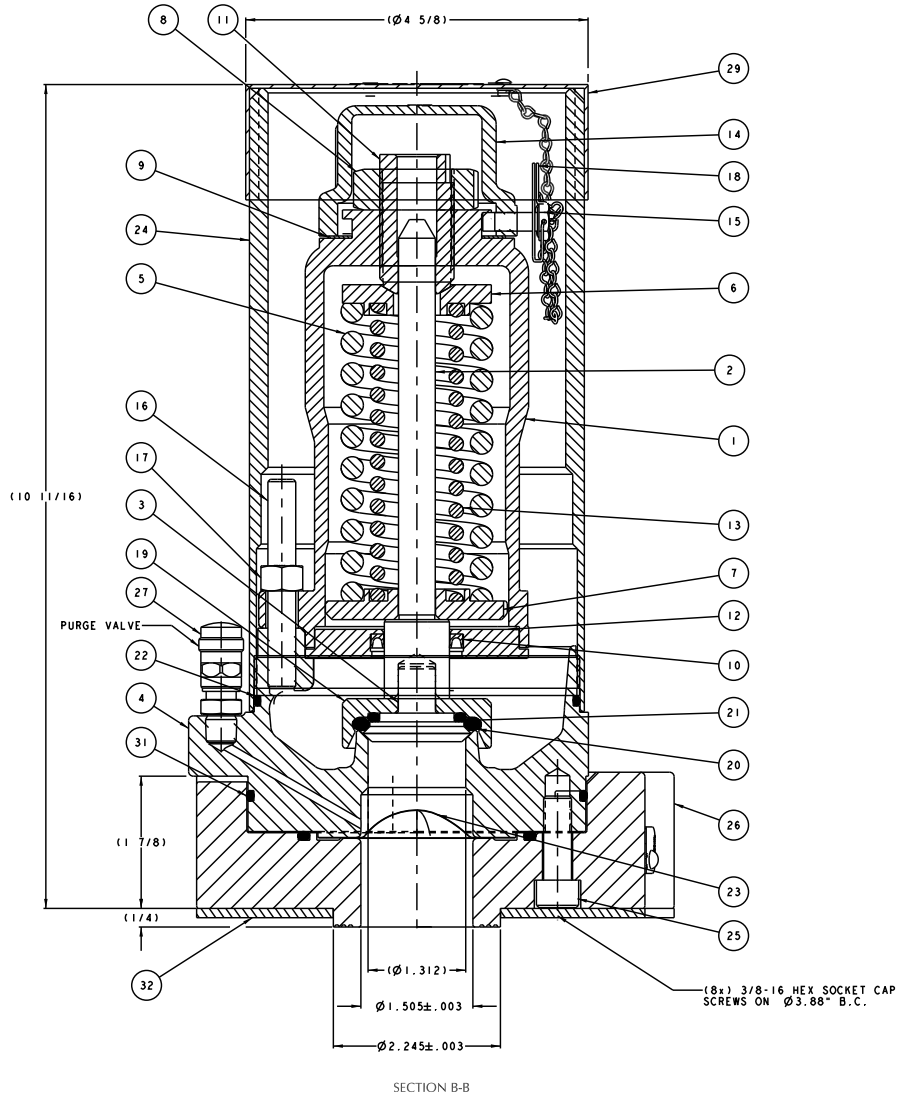
- **Cartridge design eliminates potential mis-alignment between the valve body and rupture disc flange when connecting to the tank car. Valve Mounting is now independent of rupture disc seal.**
- **Triple seal protection at the rupture disc flange to decrease the risk of leaks into the atmosphere**
- **Corrosion-resistant materials provide maximum protection from wet Chlorine**
- **Successfully used in Chlorine and AHF applications**
- **Triple seals on all potential leak paths into the atmosphere**
- **Cappable with both Midland B-240/B-243 kit and Chlorine Institute C-Kit**

A-14377C-ML-VL Pressure Relief Valve

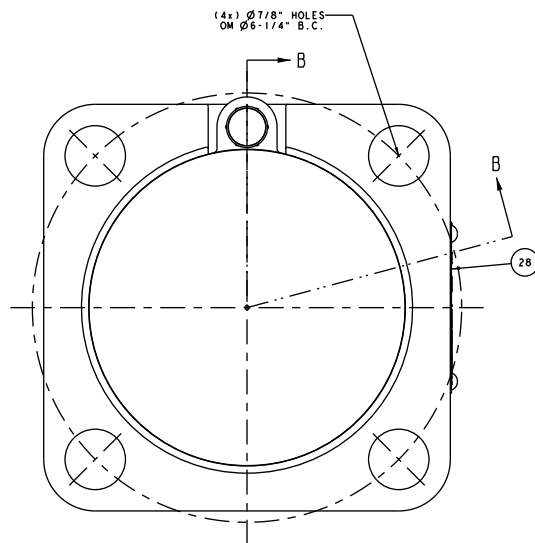
Ordering Specifications

A-14377C-ML-VL Pressure Relief Valve

ITEM	DESCRIPTION
1	TOP GUIDE
2	STEM
3	PLUG
4	BODY
5	OUTER SPRING
6	FOLLOWER
7	GUIDE
8	TOP NUT
9	TOP GASKET
10	SHAFT SEAL
11	ADJUSTING SCREW
12	SEAL RETAINER
13	INNER SPRING
14	CAP
15	SEAL SCREW
16	STUD
17	NUT
18	WIRE SEAL
19	RETAINER
20	SEAT "O" RING
21	PLUG "O" RING
22	FLUE "O" RING
23	RUPTURE DISC
24	FLUE (1)
25	RUPTURE DISC FLG BOLTS
26	RUPTURE DISC FLANGE
27	PURGE VALVE
28	NAME PLATE
29	PROTECTIVE CAP/CHAIN
30	FLANGE O-RING INNER
31	FLANGE O-RING OUTER
32	FILLER GASKET



SECTION B-B



TOP VIEW

NOTE:

(1) FOR STAINLESS FLUE, ADD SUFFIX-S TO MODEL NUMBER.



Learn more about stopping NARs. Go to midlandmfg.net and follow the link to <http://nar.aar.com>

PHONE: (847) 677-0333 • Fax: (847) 677-0138

7733 Gross Point Road • Skokie, IL 60077 • www.midlandmfg.net