



Rhino-T Steel Hopper Tee

Sure Seal introduces the New Rhino-T. The heavy-duty and abrasion resistant Hopper Tee. Manufactured to withstand demanding transportation applications, such as hauling highly abrasive material like Frac sand, carbide and silica.

Extended Wear

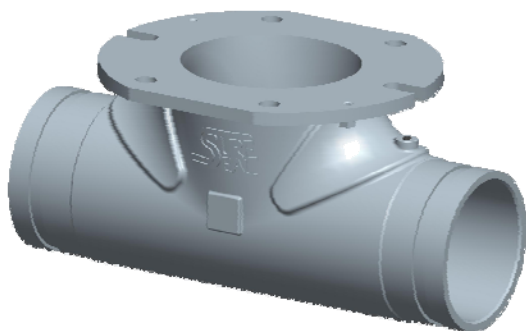
Additional pads in higher wear factor areas to significantly improve longevity. Reversible mounting and wear indicator allow for maximum product utilization

Heavy Duty Without Added Weight

Body constructed of a special grade alloy steel that is up to 40% harder but weighs no more than standard tees currently on the market

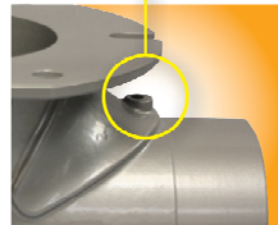
Technology Driven Analysis

Innovative engineering using Flow Analysis Software to realize optimal product flow



Visible Wear indicators

A patent pending visible wear indicator on each thick, high-wear area will let you know when thinning occurs. Plug it, reverse the tee and keep running for maximum load man-



Product Specifications

Product Number

TR-500PP, TR-500GG, TR-500GP

Dimensions:

Height - 6.55"

Width - 8.63"

Materials:

Special Grade Alloy Steel Body,
Optional Powder Coating Available

Weight:

23lbs. (10.43kg)



Rhino-T Steel Hopper Tee

Product Specifications

Product Number

See below for full line of Rhino T's

Dimensions:

Height - 6.55"

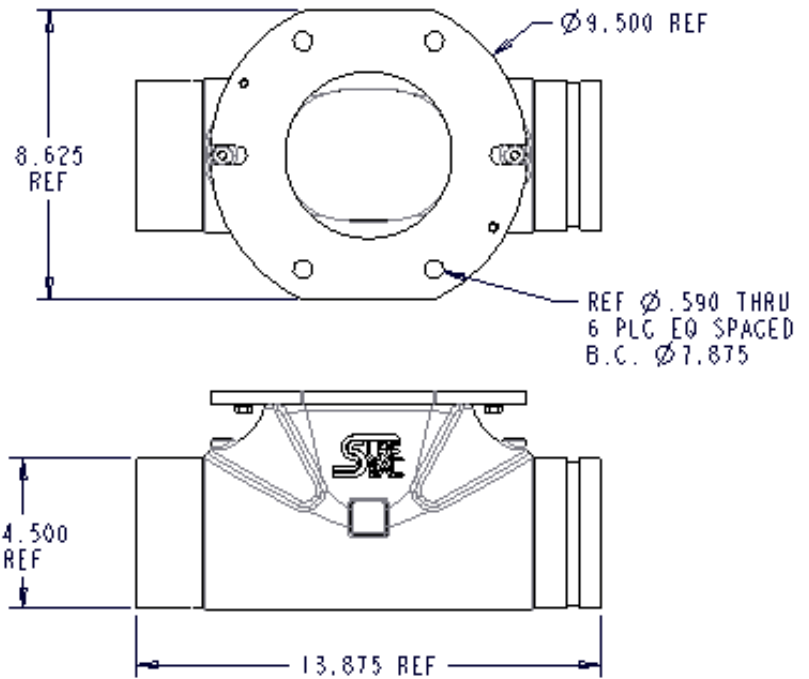
Width - 8.63"

Materials:

Special Case-hardened Grade Alloy Steel

Weight:

23lbs. (10.43 kg)



Ordering Specifications

Part Number	Description
TR-500PP	5" Cast Steel Hopper Tee, Plain to Plain Schedule 80 (maximum wear)
TR-500PP-PC	5" Powder Coated Cast Steel Hopper Tee, Plain to Plain Schedule 80 (maximum wear)
TR-500GG	5" Cast Steel Hopper Tee, Groove to Groove Schedule 80
TR-500GG-PC	5" Powder Coated Cast Steel Hopper Tee, Groove to Groove Schedule 80
TR-500GP	5" Cast Steel Hopper Tee, Plain to Groove Schedule 80
TR-500GP-PC	5" Powder Coated Cast Steel Hopper Tee, Plain to Groove Schedule 80

