



CivaControl™ Air System

Take Control of Your Entire Tank System During Loading and Unloading

Fail Safe Operation

Our CivaControl Air System will provide a simple Control for the entire tank system during loading and unloading. CivaControl Air Systems bring together the control of Compartment Vents, Vapor Recovery Valves, Internal Valves, Overfill Detection and Vehicle Drive Away systems.

Tank Protection

Fully-sequenced operation ensures the tank can only be loaded or unloaded when the truck is in a totally ready condition.

Purpose Built

Specifically-designed, unique-function, heavy-duty pneumatic control valves ensures reliable performance in extreme operating conditions.

- Temperature range (-40° F to 150° F)
- Robust controls are ergonomically positioned for ease of operation
- Available for tanks with 1 to 12 compartments



CCP-4 on a Tank Truck



Easy to Install

All valves are conveniently pre-mounted on an aluminum panel for easy mounting in a central location.

Versatile

CivaControl Air Systems control the full spectrum of tank truck and tank trailer functions. Whether installed on petroleum transport trailers or metered delivery tank trucks equipped with Civacon Manifolds, you're always in complete control. Conveniently mounted air pressure gauge and visual indicator advise the readiness of the system.

CivaControl Ordering Information

Number of Compartments	Part Number	Panel Length 'L'
1	CCP-1	4.5" Square
2	CCP-2	12.0"
3	CCP-3	12.0"
4	CCP-4	12.0"
5	CCP-5	12.0"
6	CCP-6	13.8"
7	CCP-7	17.2"
8	CCP-8	17.2"
9+	Consult Factory	

NOTE: CCP-1 has no Pressure Gauge.



Bringing it All Together

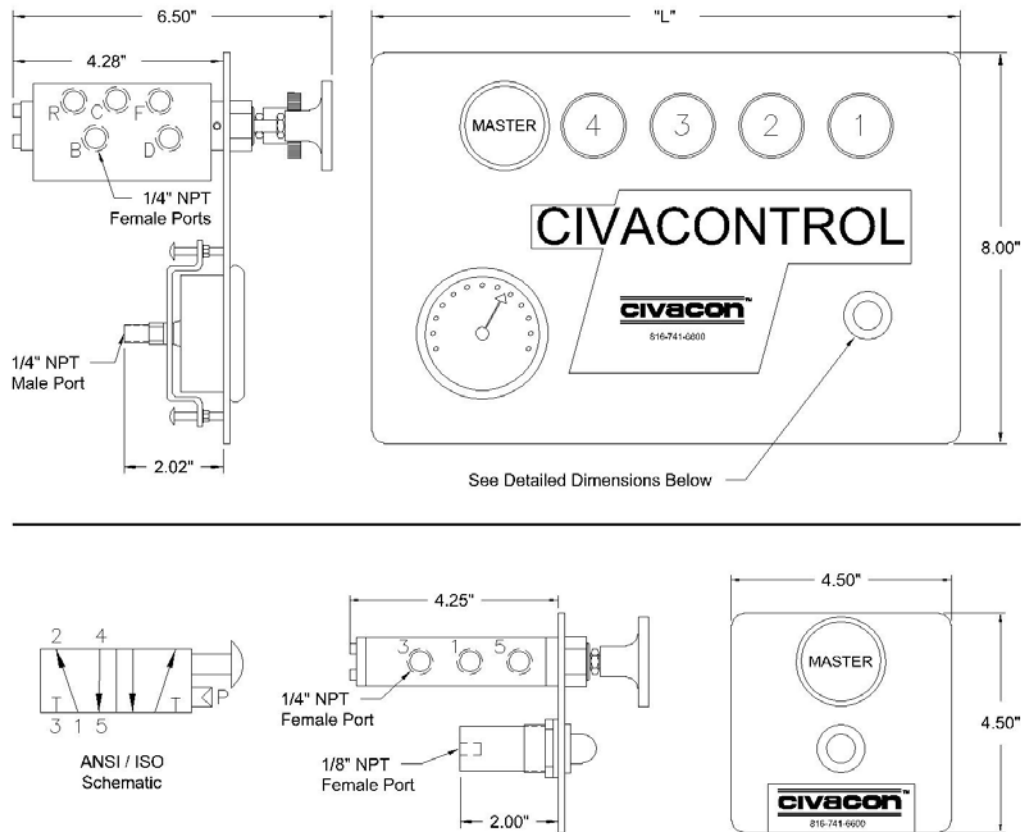
CivaControl Air Systems provide safe, sequenced operation of all essential components for the loading and unloading functions of your tank truck or trailer. By bringing together full control of the loading and unloading process to a central location, CivaControl provides easy and safe operation in all conditions.

System 3

CivaControl is the central component of our System 3 complete tank truck or trailer loading and unloading system. The full benefit of these purpose-built controls are best realized when installed along with, and integrated into, the rest of our Civacon System 3 pneumatic tank truck components to form a total safety and interlock system. (Pneumatic Vapor Vents, Emergency Valves, API Adaptors, Vapor Recovery Connections, Electronic Overfill Detection, Manifolds, Guard Bars and Guard Bar Interlocks).



CCP-1 used as a Load Valve to release the Guard Bar Lock over APIs. Pop-Up confirms Vapor Vents are "open".



CivaControl Panel Outline Drawings (CCP-4 above & CCP-1 below)