

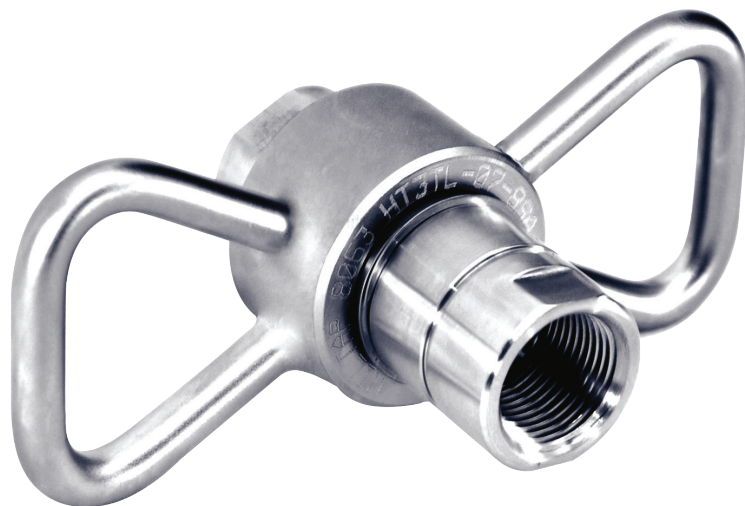
3TL Series

Hammer-Free Quick Coupling

The 3TL Transfer Loading Series is an all-purpose, high-performance quick coupling. Designed with a metal-to-metal wedge seal, the 3TL requires **NO HAMMERING** for a secure connection regardless of pressure and temperature.

Features and Benefits

- Takes on virtually any pressure at any temperature for a leak-free connection
- Metal-to-metal wedge seal replaces the need for hammer unions
- Tightening by hand only requires light torque – no more straining
- Unique disengagement safety feature automatically vents residual pressure
- Fits in the smallest of areas and is available in any combination of threaded, butt- or socket-welded ends
- Customizable sleeve handles available
- Back-up O-ring seal provides redundant/secondary sealing



HILTAP

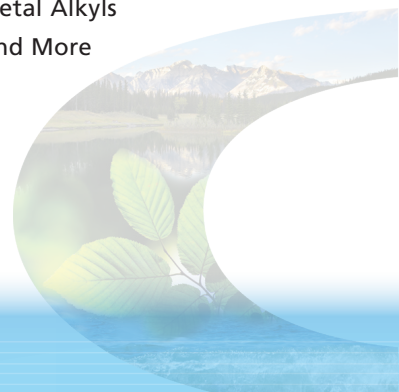
Specifications

- Available in Sizes: 1" – 6"
- Materials of Construction: Carbon Steel or Stainless Steel
- End-Connection Types: FNPT, butt weld, socket weld (male, female)
- Designed and Tested to ANSI B31.3
- Quality Assurance to ISO 9001-2000
- Meets NACE Corrosion Specifications
- Full Material Traceability Available

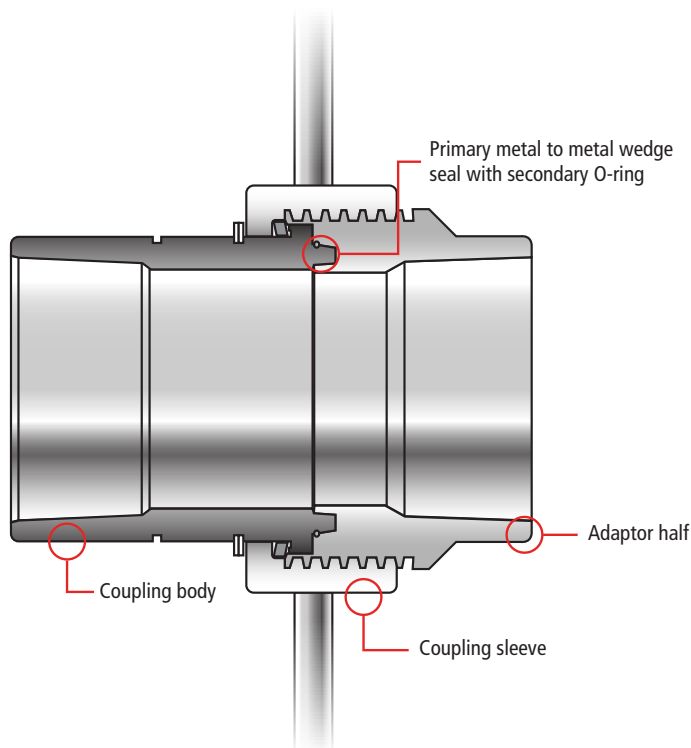
Applications

Perfect for situations where connections of high or low temperatures and pressures are experienced – in-plant, through plant, out-of-plant.

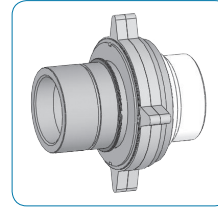
- | | |
|--------------|----------------|
| • Cryogenics | • Chlorine |
| • Steam | • Ammonia |
| • Oil | • Paints |
| • LPG | • Fracking |
| • LNG | • Metal Alkyls |
| • Acids | • And More |
| • EO | |



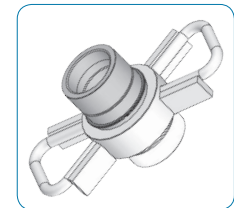
3TL Series Metal-to-Metal Advantage



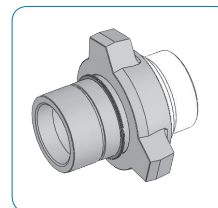
Available Sleeves



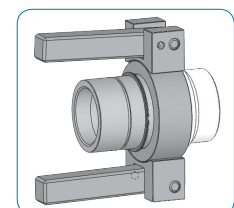
Lugged Sleeve available in 2" Brass only



Loop Handle Sleeve available in 1", 1 1/2", 2", 3" and 4"



Impact Union Sleeve available in 2" only



Bar Handle Sleeve available in 2", 3" and 4"

3TL Series Temperature and Pressure Ratings

Size	Fluorocarbon, Aflas, Teflon®		EPDM		Buna-N		Neoprene		Max PSI	Max BAR
	Temp (F)	Temp (C)	Temp (F)	Temp (C)	Temp (F)	Temp (C)	Temp (F)	Temp (C)		
1" CS	400° F	204° C	300° F	149° C	248° F	120° C	275° F	135° C	3245	224
1" SST	400° F	204° C	300° F	149° C	248° F	120° C	275° F	135° C	2453	169
1 1/2" CS	400° F	204° C	300° F	149° C	248° F	120° C	275° F	135° C	3123	215
1 1/2" SST	400° F	204° C	300° F	149° C	248° F	120° C	275° F	135° C	2320	160
2" CS	400° F	204° C	300° F	149° C	248° F	120° C	275° F	135° C	2612	180
2" SST	400° F	204° C	300° F	149° C	248° F	120° C	275° F	135° C	2000	138
2" Brass	400° F	204° C	300° F	149° C	248° F	120° C	275° F	135° C	350	24
3" CS	400° F	204° C	300° F	149° C	248° F	120° C	275° F	135° C	963	66
3" SST	400° F	204° C	300° F	149° C	248° F	120° C	275° F	135° C	1008	69
4" CS	400° F	204° C	300° F	149° C	248° F	120° C	275° F	135° C	975	67
4" SST	400° F	204° C	300° F	149° C	248° F	120° C	275° F	135° C	736	51

NOTE: This chart represents the most commonly requested specifications. Call (513) 932-8424 if higher temperature and pressure tolerances are required.