



Materials

Body: 316L stainless steel

Seals: Specially formulated polymers and elastomers specific to high-pressure hydrogen applications.



L Series Hydrogen Fueling Receptacle

Features

- ◆ **High-Flow/Fast-Fill Capability** - the LW Series receptacles have a large flow capacity. The flow path allows very high flows combined with low pressure drop and enhanced resistance to hydrate formation.
- ◆ **Durable, Corrosion-Resistant Construction** - all OPW receptacles are made from 316 stainless steel. This material is proven to stand up in the harsh hydrogen refueling environment.
- ◆ **Non-Contact Check Valve** - each OPW receptacle contains a highly reliable non-contact check valve that opens when differential pressure is present during refueling.
- ◆ **Unique Sealing System** - all OPW receptacles consist of a stainless steel poppet that aligns with a rearward facing capture seal located in the receptacle body. This arrangement prevents seal "wash-out" during high flow conditions and "cratering" due to debris. The seal material has exceptionally long service life, resists creep and deformation and has exceptional wear resistance under all operating pressure and temperature conditions.

- ◆ **Optional 0.4 mm Filter** - the LK5000/LK3600 receptacle has a filter located in front of the receptacle check valve. This captures most of the dirt and road grime that collects in and around the vehicle receptacle. The filter protects from impurities in the high velocity gas stream that can damage the receptacle seals as well as components in the vehicle fuel system. This is a serviceable item and can be removed and reinstalled with special tools supplied by OPW.
- ◆ **Dedicated Coupling Profile** - the receptacle profiles are designed to eliminate the chance of misconnection to any other form of fuel such as CNG.
- ◆ **Individually Leak Tested and Inspected with Traceable Batch Numbers**

Specifications:

Min. Flow Rate: 2000 SCFM @ 3600 psid

Temperature Range: -40° F to 250° F
(-40° C to 120° C)

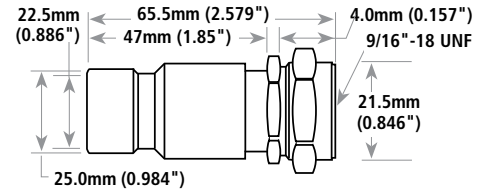
Receptacle Cv: 0.91 Non-filtered
0.83 Filtered

MAWP: 6250 psi (430 bar)

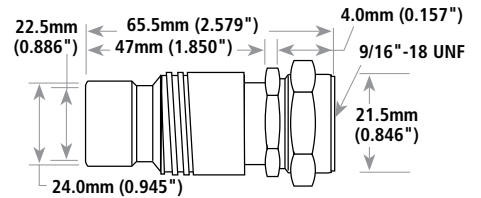
L Series Hydrogen Fueling Receptacle

OPW L Series Hydrogen Refueling Receptacles are designed for use on automobiles, light trucks, vans and buses. Must be used only in conjunction with OPW CH1000 Hydrogen Nozzles.

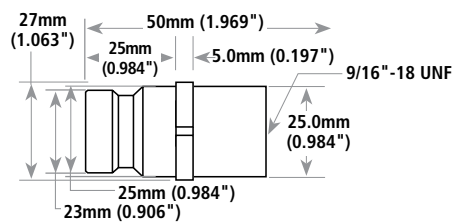
LK3600



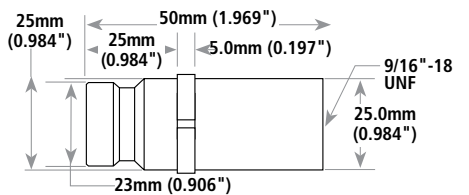
LK5000



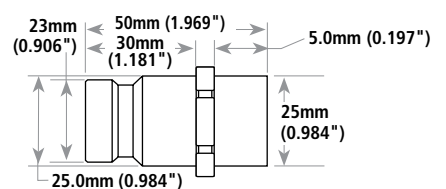
LW3600



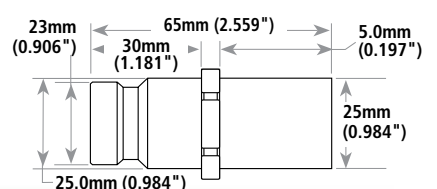
LW3600-F



LW5000



LW5000-F



Ordering Specifications

Product #	Inlet Thread Size	Service Pressure	Description	Weight
LK3600	SAE- 6, 9/16" -18 UNF	5000 psi 345 bar	1 1/16" Hex with bulkhead mounting ISO Profile	0.5 lb (0.23 kg)
LK5000	SAE- 6, 9/16" -18 UNF	3600 psi 250 bar	1 1/16" Hex with bulkhead mounting ISO Profile	
LW3600	SAE- 6, 9/16" -18 UNF	3600 psi 250 bar	1 1/16" Hex SAE Profile	
LW3600-F	SAE- 6, 9/16" -18 Filtered	3600 psi 250 bar	1 1/16" Hex SAE Profile	
LW5000	SAE- 6, 9/16" -18 UNF	5000 psi 345 bar	1 1/16" Hex SAE Profile	
LW5000-F	SAE- 6, 9/16" -18 Filtered	5000 psi 345 bar	1 1/16" Hex SAE Profile	

LW series hydrogen SAE J2600 profile receptacle

NOTE: -F are Filtered Receptacles