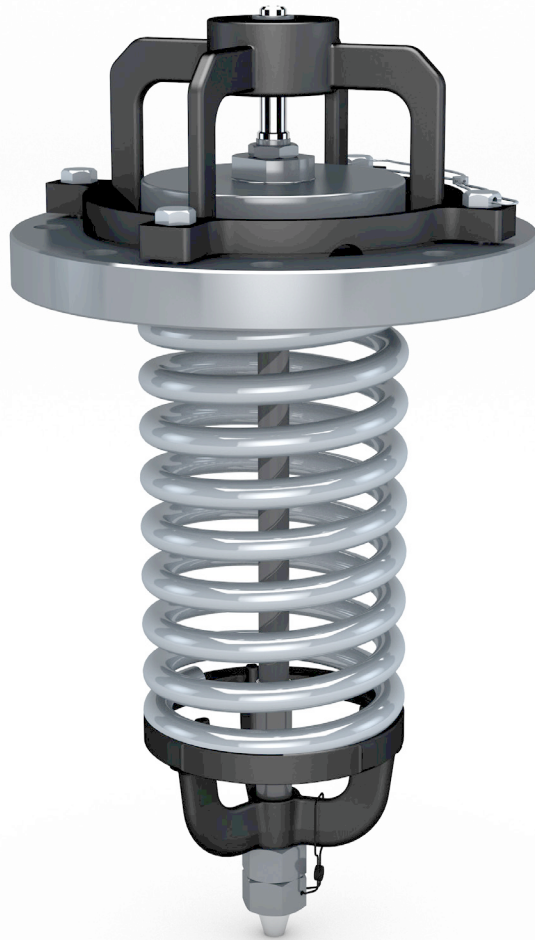


Model A-22076

Internal Pressure Relief Valve
March 7, 2016
Rev. 01



TECHNICAL SPECIFICATIONS

- Start-to-Discharge Pressure Setting:
75 ± 3 psig
- Certified Capacity at Flow Rating
Pressure (air): 29,550 scfm
- Max. Vapor-Tight Pressure: 60 psig
- Max. Flow Rating Pressure: 85 psig
- Max. Operating Temperature: 250°F – 600°F
(Depending Upon Elastomer Seal Selection)
- Mounting: Standard 10-¼" Bolt
Circle, Flat Face
- Mounting Configuration per AAR:
A-1002, Fig. E21A
- AAR Approval No. PRD122007

NOTE: Alternate O-ring materials are available.



Model A-22076
Internal Pressure Relief Valve
March 7, 2016
Rev. 01

ITEM	QTY	PART NAME	MATERIAL	PART NO.
1	1	TOP GUIDE WITH INSERT	CARBON STEEL	29-01-XS-P
2	1	VALVE STEM	STAINLESS STEEL	29-02-SS
3	1	RETAINER	CARBON STEEL – NICKEL-PLATED	29-0301-CS-NI
4	1	SAFETY VALVE BODY	CARBON STEEL – NICKEL-PLATED	29-042-CS-NI
5	1	PRV SPRING	STAINLESS STEEL	29-51-SS
6	1	FOLLOWER	CARBON STEEL – NICKEL-PLATED	29-06-CS-NI
7	1	NYLON INSERT LOCKNUT	STAINLESS STEEL	23-8-SS
8	1	O-RING, 2-351	BUNA-N*	29-011-BN
9	1	O-RING, 2-431	BUNA-N*	29-010-BN
10	2	HEX NUT	STAINLESS STEEL	29-012-MO
11	2	HEX-HEAD CAP SCREW	STAINLESS STEEL	29-014-SS
12	2	HEX-HEAD CAP SCREW	STAINLESS STEEL	29-0141-SS
13	1	NAME PLATE	STAINLESS STEEL	29-0762-SS
14	2	DRIVE SCREW	STAINLESS STEEL	763-11-SS
15	4	GASKET	PTFE	29-170-PTFE
16	2	WIRE SEAL KIT	STAINLESS STEEL	22-72-SS

*NOTE: Alternate materials available.

