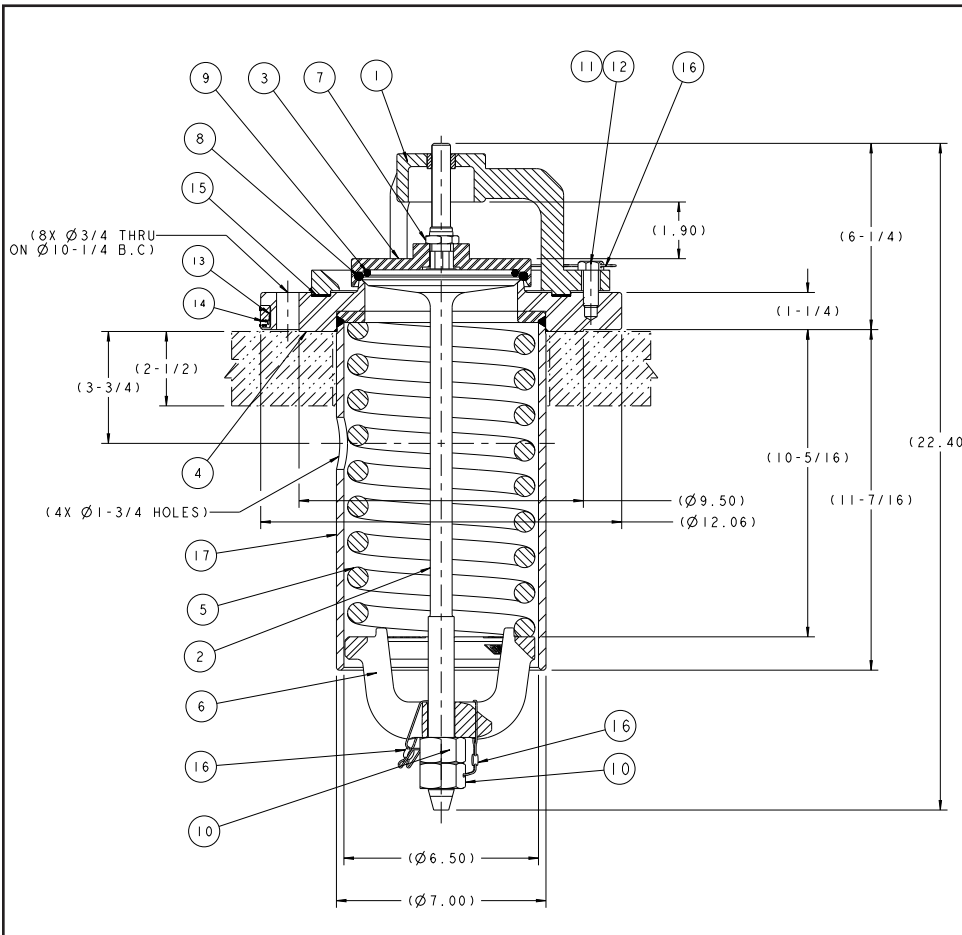
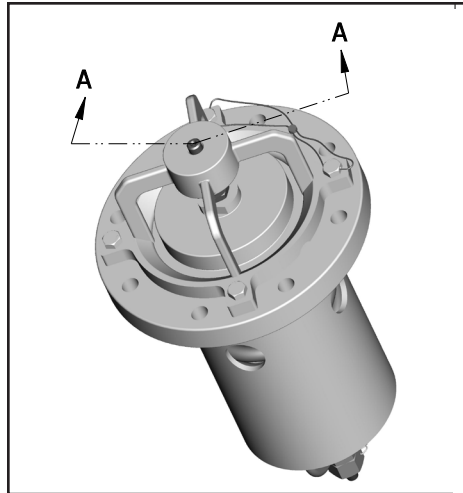




# Model A-22075-PI-F-CS Pressure Relief Valve

Dwg No: A-22075-PI-F-CS-SPEC  
Revision: None

Date: Feb 19, 2013



## SPECIFICATION

- Start-To-Discharge Pressure: 75 psig +/- 3 PSIG
- Vapor Tight Pressure: 60 PSIG minimum
- Certified Capacity at Flow Rating Pressure: 29,550 SCFM Air
- Flow Rating Pressure: 85 PSIG maximum
- Effective Orifice Area: 20 in<sup>2</sup>
- Discharge Coefficient ( $K_d$ ): .81
- Maximum Operating Temperature: 250°F ~ 600°F (Depending on elastomer seal selection)
- Minimum Operating Temperature: -20°F
- Mounting Studs: (8) @ 5/8-11UNC X 3.0" Long (Min.)
- Mounting Stud Torque: 120 +/-10 ft-lb
- Mounting Clearance Hole: 7.250" Dia.
- Top Guide Cap Screw (Items #11&12) Torque: 80 +/- 5 ft-lb
- Stem Locknut (Item #7) Torque: 110 +/-10 ft-lb
- Stem Adjusting Nut & Locknut (Item #10 x 2) Torque together to 300 ft-lb
- Recommended gasket size: 9.5" OD X 7.25 ID X .125 Thk
- AAR Approval No.: PRD122007
- Note: Alternate o-ring materials available

ITEM NO.	QTY.	PART NAME	MATERIAL	PART NUMBER
1	1	TOP GUIDE WITH INSERT	CARBON STEEL	29-01-XS
2	1	VALVE STEM	STAINLESS STEEL	29-02-SS
3	1	RETAINER - BARSTOCK VERSION	CARBON STEEL	29-0301-CS
4	1	SAFETY VALVE BODY, MACHINED	CARBON STEEL	29-040-CS
5	1	PRV SPRING	ALLOY STEEL	29-51-AS
6	1	FOLLOWER, MACHINING	CARBON STEEL	29-06-CS
7	1	NYLON INSERT LOCKNUT	CARBON STEEL	23-8-CS
8	1	O-RING, 2-431	BUNA-N (NOTE)	29-010-BN
9	1	O-RING, 2-351	BUNA-N (NOTE)	29-011-BN
10	2	HEX NUT	CARBON STEEL	29-012-CS
11	2	HEX HEAD CAP SCREW	ALLOY STEEL	29-014-AS
12	2	HEX HEAD CAP SCREW	ALLOY STEEL	29-0141-AS
13	1	NAME PLATE	STAINLESS STEEL	29-0751-SS
14	2	DRIVE SCREW	STAINLESS STEEL	763-11-SS
15	1	GASKET	PTFE	29-170-PTFE
16	3	WIRE SEAL KIT	SS/LEAD	22-72-PB
17	1	TUBE ASSEMBLY	CARBON STEEL	29-07-CS

NOTE: ALTERNATE MATERIALS AVAILABLE.

MODEL NO.	PRESSURE SETTING (PSIG)	FLOW RATE (SCFM-AIR)	NET FLOW AREA (INCH <sup>2</sup> )
A-22075-PI-F-CS	75	29,550	20