

© 2002 Midland Manufacturing Corp.

All designs subject to change without notice. Installation dimensions and mounting arrangements are for general information. Certified drawings are available upon request.

GATX - TRINITY

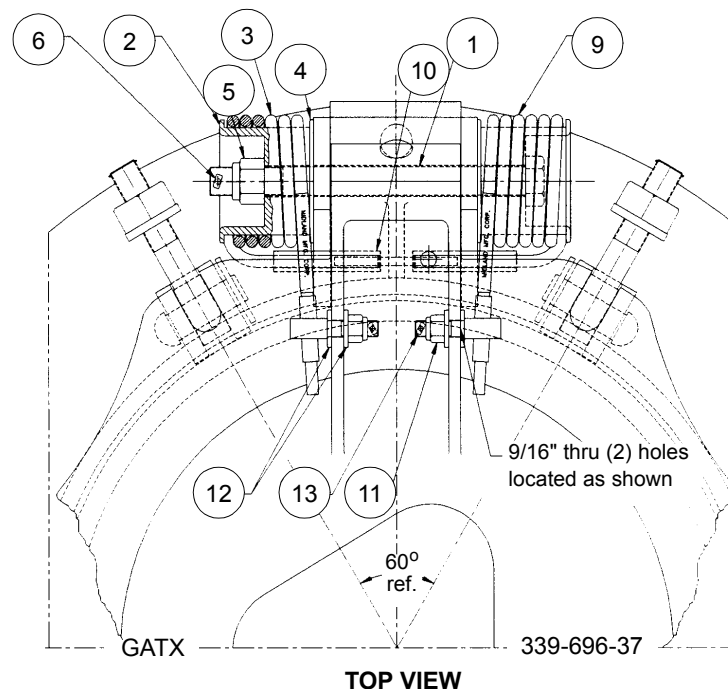
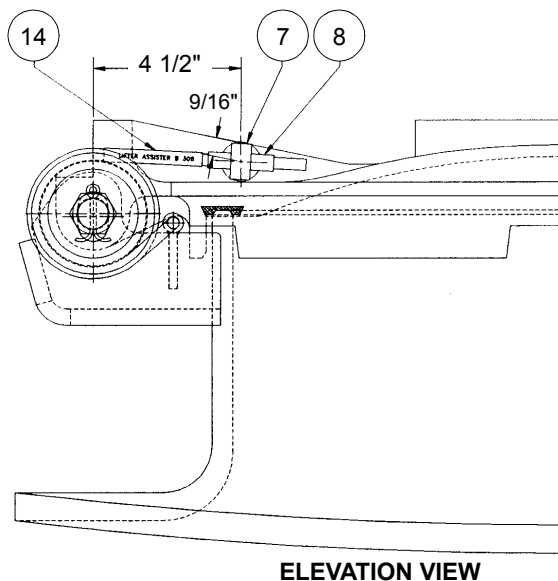
B-308 LIFTER ASSISTER
ASSEMBLY PROCEDURE STEPS:

ITEM NO.	QTY.	PART NAME	PART NO.	MATERIAL
1	1	HINGE BOLT	308-1-CS	STEEL, PLATED
2	2	BUSHING	308-2-CS	STEEL, PAINTED
3	1	SPRING R.H.	308-3-CS	STEEL, PAINTED
4	2	WASHER	308-4-CS	STEEL, PAINTED
5	1	LOCK NUT	308-5-CS	STEEL, PLATED
6	1	COTTER PIN	303-6-SS	STAINLESS
7	2	EYEBOLT	308-7-CS	STEEL, PLATED

ITEM NO.	QTY.	PART NAME	PART NO.	MATERIAL
8	2	SLEEVE	308-8-TF	TEFLON
9	1	SPRING LH	308-9-CS	STEEL, PAINTED
10	1	TUBE ASSEMBLY	308-10-CS	STEEL, PAINTED
11	2	LOCK NUT	308-11-CS	STEEL, PLATED
12	4	WASHER	308-12-CS	STEEL, PLATED
13	2	COTTER PIN	308-13-SS	STAINLESS STEEL
14	1	NAMEPLATE	308-32A-PS	PLASTIC
	1		308-32B-PS	PLASTIC

1. Close cover.
2. Drill hole in cover ribs for eyebolts.
3. Remove existing pin assembly.
4. Assemble bushing #2, LH spring #9, and washer #4 on hinge bolt #1, and insert bolt thru hinge.
5. Install tube #10, washer #4, RH spring #3 (with end into tube), bushing #2, nut #5, and cotter pin #6.
6. Open cover to full open position against stop.
7. Slip sleeve #8 and eyebolt #7 on each spring end and install eyebolt into drilled hole, add nut #11 and cotter pin #13.
8. Close and open cover to test operation; lift force at handle should be 10 to 25 pounds.

PATENT 5,394,650



TO PLACE AN ORDER, OR JUST ASK A QUESTION, CALL (847) 677 - 0333 OR FAX (847) 677 - 0138

REVISION 4.0

11/10/97