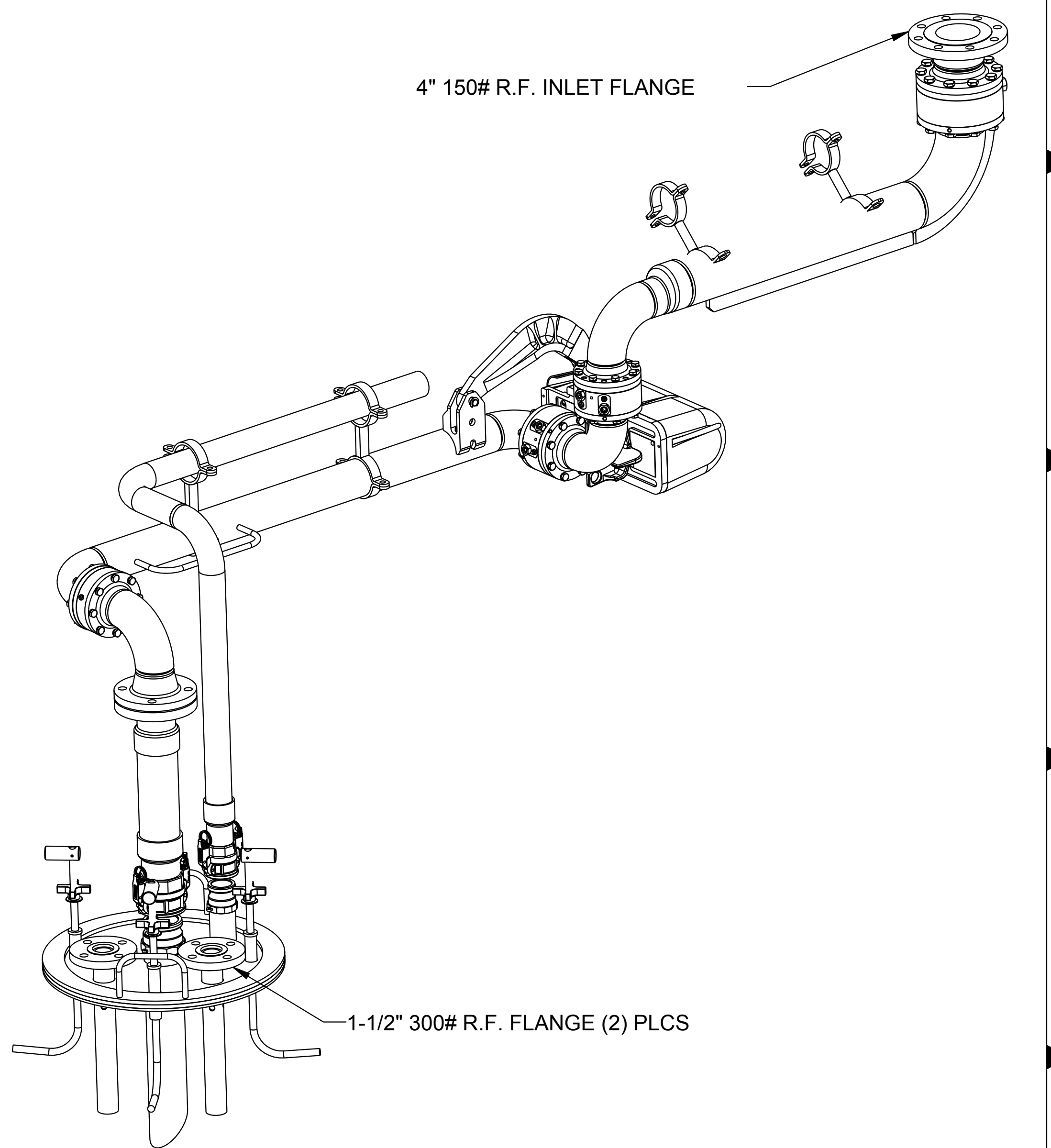


MATERIALS OF CONSTRUCTION	316L STAINLESS STEEL
SWIVEL JOINT SEALS	KALREZ 6375
PRODUCT	93% TO 98% SULFURIC ACID
ESTIMATED WEIGHT	525 LBS
1 MOMENT LOAD AT SPRING	9650 IN-LBS
MOMENT LOAD AT INLET	26,800 IN-LBS
FLANGE GASKETS	GARLOCK GYLON 3500
TEST PRESSURE	90 PSI
PRODUCT RETENTION	NO
WEIGHT BY OTHERS	OVER FILL SENSOR (2)
RADIOGRAPHIC INSPECTION	5% FLOW PASSAGE WELDS

26	1	EA	H32341M	RADIOGRAPHIC INSPECTION REQUIRED
25	1	EA	HX99413	PIPE PACKAGE, SST, EGT33F-J440, J439
24	1	EA	LADOC-STD	LOADING ARM, NAME TAG AND HARDWARE
23	1	EA	FHK-150-03-SS-HT	FLANGE HW KIT, 150LB, SS, HI-TEMP, 3"
22	1	EA	LSK-8000-0409	LOADER SEAL KIT, 8000, KALREZ 6375, 4"
21	3	EA	LSK-8000-0309	LOADER SEAL KIT, 8000, KALREZ 6375, 3"
20	1	EA	H07904M	KAMLOK GASKET, PTFE ENCAP SILICON, 2
19	1	EA	H20896M	CAM AND GROOVE GSKT, PTFE ENCAP SILICON, 3"
18	1	EA	C20709	ASM,SF x F,SST,DSF,4"
17	1	EA	C20693	MODULE,SWIVEL,SST,DSF,4"
16	1	EA	N/A	4" X 3" SST DSF ASSEMBLY
15	1	EA	790C-0050	RIGHT HAND EZ ADJUST 'C' SPRING BALANCE
14	1	EA	N/A	3" SST DSF SWIVEL ASSEMBLY
13	2	EA	C20562	MODULE,SWIVEL,SST,DSF,3"
12	1	EA	C20786	ASM,BU STYLE,DFRH/UFLH,SST,DSF,3"
11	1	EA	HX99427	2" SST FLEXHOSE, 18' OAL, MNPT EA END
10	1	EA	733DL-20SB	2" SST AUTOLOK COUPLER
9	1	EA	633A-SS20	2" SST AUTOLOK ADAPTOR
8	4	EA	HX98904	J-HOOK ASSY, SST & ALUM
7	2	EA	HX80195	3" X 3" CLAMP ASSY
6	1	EA	C21228	MODULE,SWIVEL,SST,DSF SINGLE,3"
5	1	EA	C20614	WLDT, SF x LRE x F, 3" SST DSF
4	4	EA	HX99423	3" SST FLEXHOSE
3	1	EA	733DL-30SB	3" AUTOLOK CPLR, FNPT, SST
2	1	EA	633A-SS30	3" SST AUTOLOK ADAPTOR, FNPT
1	1	EA	7191LCP	LOCKING COVER PLATE, SST, LO-TEMP BUNA
ITEM	QTY	UM	PART NUMBER	DESCRIPTION

THIS DRAWING IS NOT TO BE SCALED. FOR ADDITIONAL INFORMATION, PLEASE CONTACT OUR ENGINEERING DEPT.

REVISIONS					
LTR	ECN #	DESCRIPTION	DRAWN	APPROVED	DATE
-	-	-	-	-	-



<p>CONFIDENTIAL - THIS DOCUMENT CONTAINS INFORMATION WHICH IS PROPRIETARY TO OPW, AND SHOULD BE PROTECTED ACCORDINGLY.</p>			<p>DESCRIPTION: 4" X 3" TOP LOADING ARM, DFRH</p>		
SIGNATURES		MO-DA-YR	REV:	PART NUMBER:	
DRAWN: BJB		1/14/11	-	EGT33F-J440	
CHECKED: -		-	SIZE:	D	
MATERIAL:		WEIGHT:	SCALE: 0.120 SHEET 1 OF 7		
			<p>OPW Engineered Systems PART OF OPW FLUID TRANSFER GROUP A DOVER COMPANY</p>		
			3D GENERATED DRAWING		

A

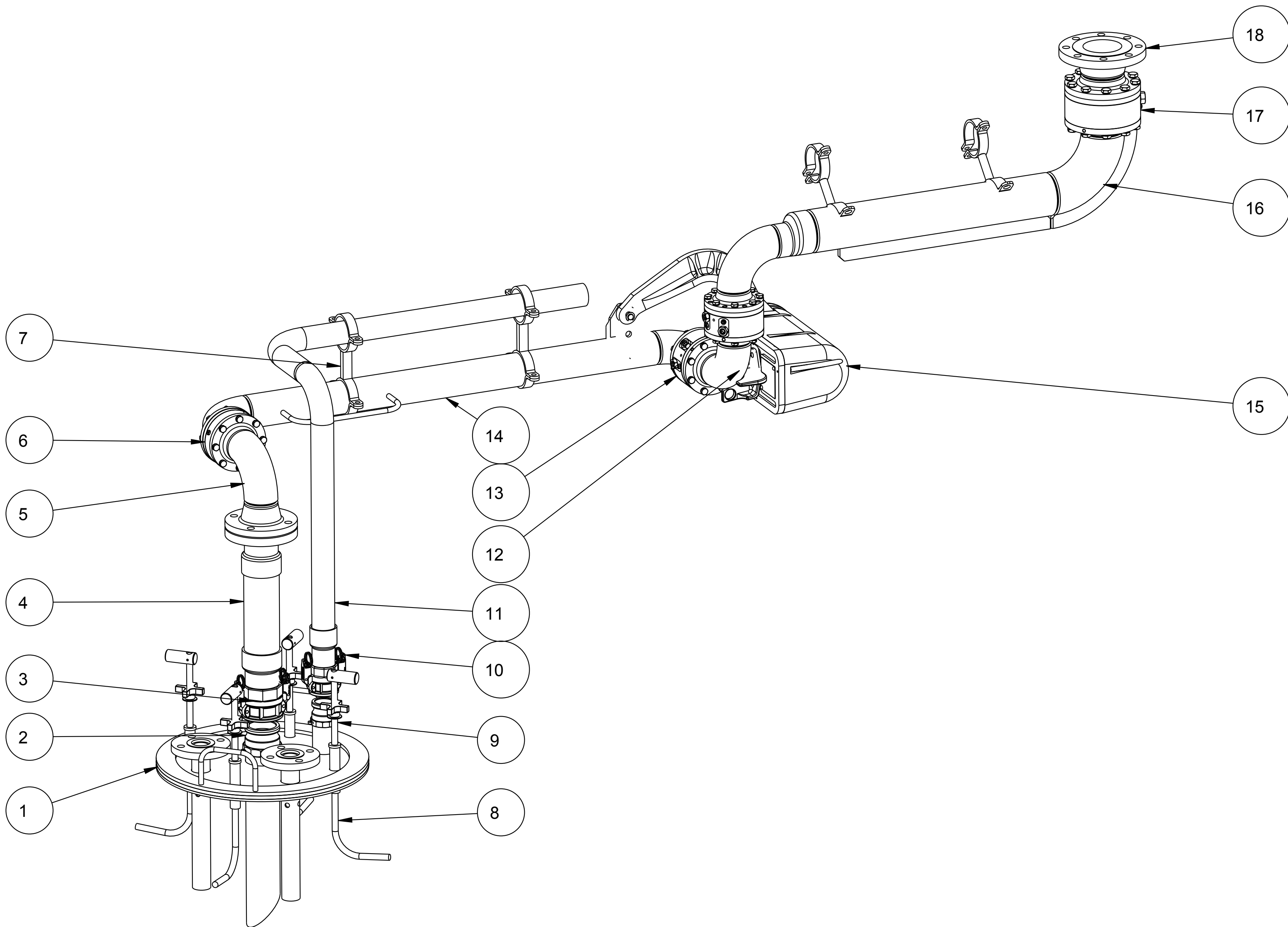
B

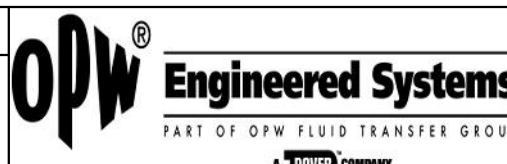
C

D

E

THIS DRAWING IS NOT TO BE SCALED. FOR ADDITIONAL INFORMATION, PLEASE CONTACT OUR ENGINEERING DEPT.



CONFIDENTIAL THIS DOCUMENT CONTAINS INFORMATION WHICH IS PROPRIETARY TO OPW, AND SHOULD BE PROTECTED ACCORDINGLY.		DESCRIPTION: 4" X 3" TOP LOADING ARM, DFRH	
SIGNATURES		MO-DA-YR	REV:
DRAWN:	BJB	1/14/11	-
CHECKED:	-	-	SIZE:
MATERIAL:	WEIGHT:	-	D
		PART NUMBER: EGT33F-J440	
		SCALE: 0.133	SHEET 2 OF 7
		 <small>PART OF OPW FLUID TRANSFER GROUP</small> <small>A DOVER COMPANY</small>	
		3D GENERATED DRAWING	

A

B

C

D

E

A

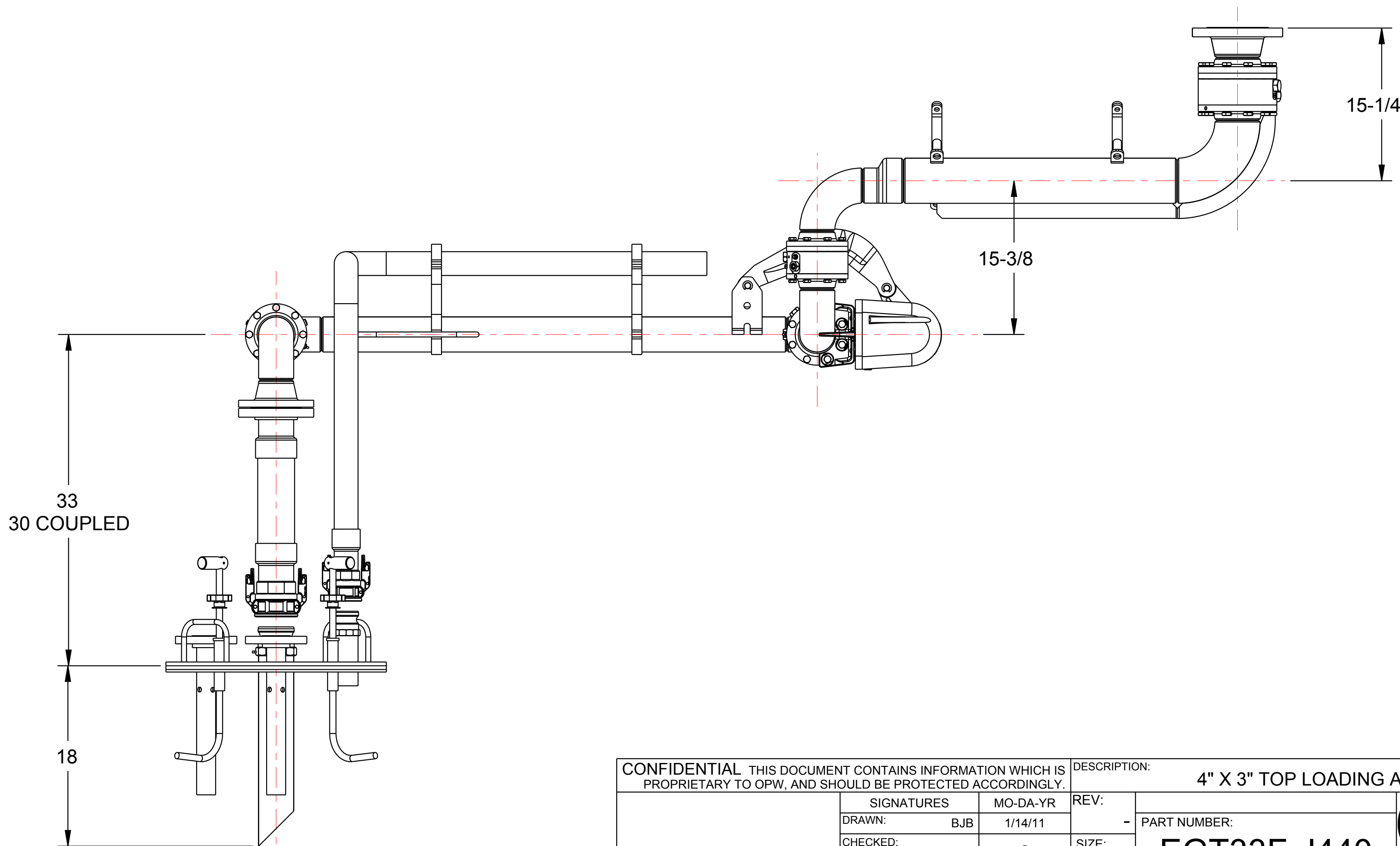
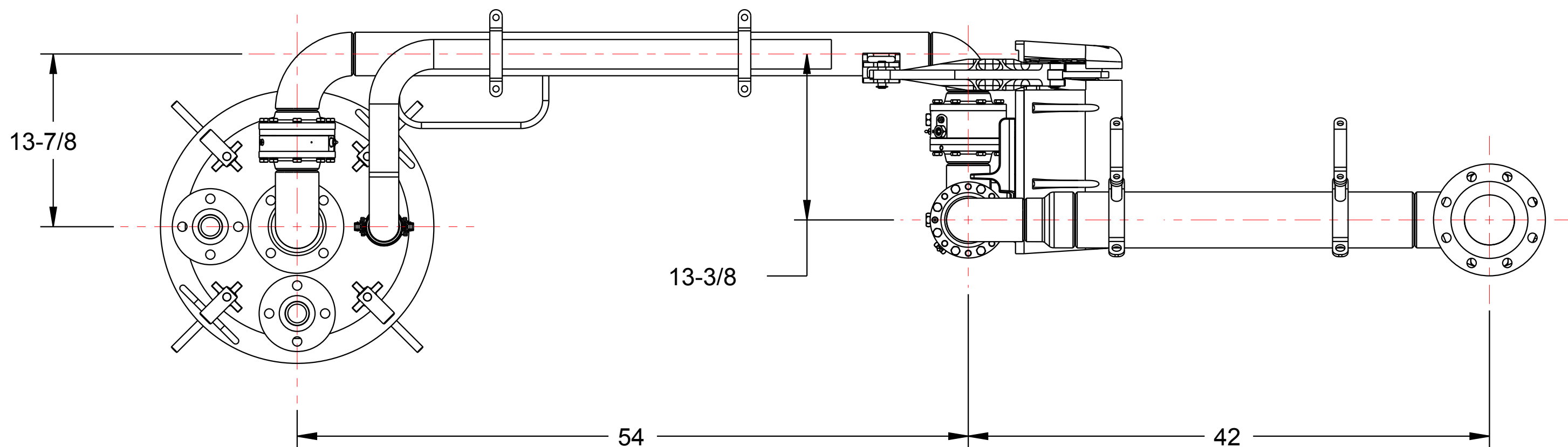
B

C

D

E

THIS DRAWING IS NOT TO BE SCALED. FOR ADDITIONAL INFORMATION, PLEASE CONTACT OUR ENGINEERING DEPT.



CONFIDENTIAL THIS DOCUMENT CONTAINS INFORMATION WHICH IS PROPRIETARY TO OPW, AND SHOULD BE PROTECTED ACCORDINGLY.

DESCRIPTION: 4" X 3" TOP LOADING ARM, DFRH

SIGNATURES		MO-DA-YR
DRAWN:	BJB	1/14/11
CHECKED:	-	-
MATERIAL:	WEIGHT:	

REV:	-	PART NUMBER:	EGT33F-J440
SIZE:	D	SCALE: 0.120	
		SHEET 3 OF 7	3D GENERATED DRAWING



A

B

C

D

E