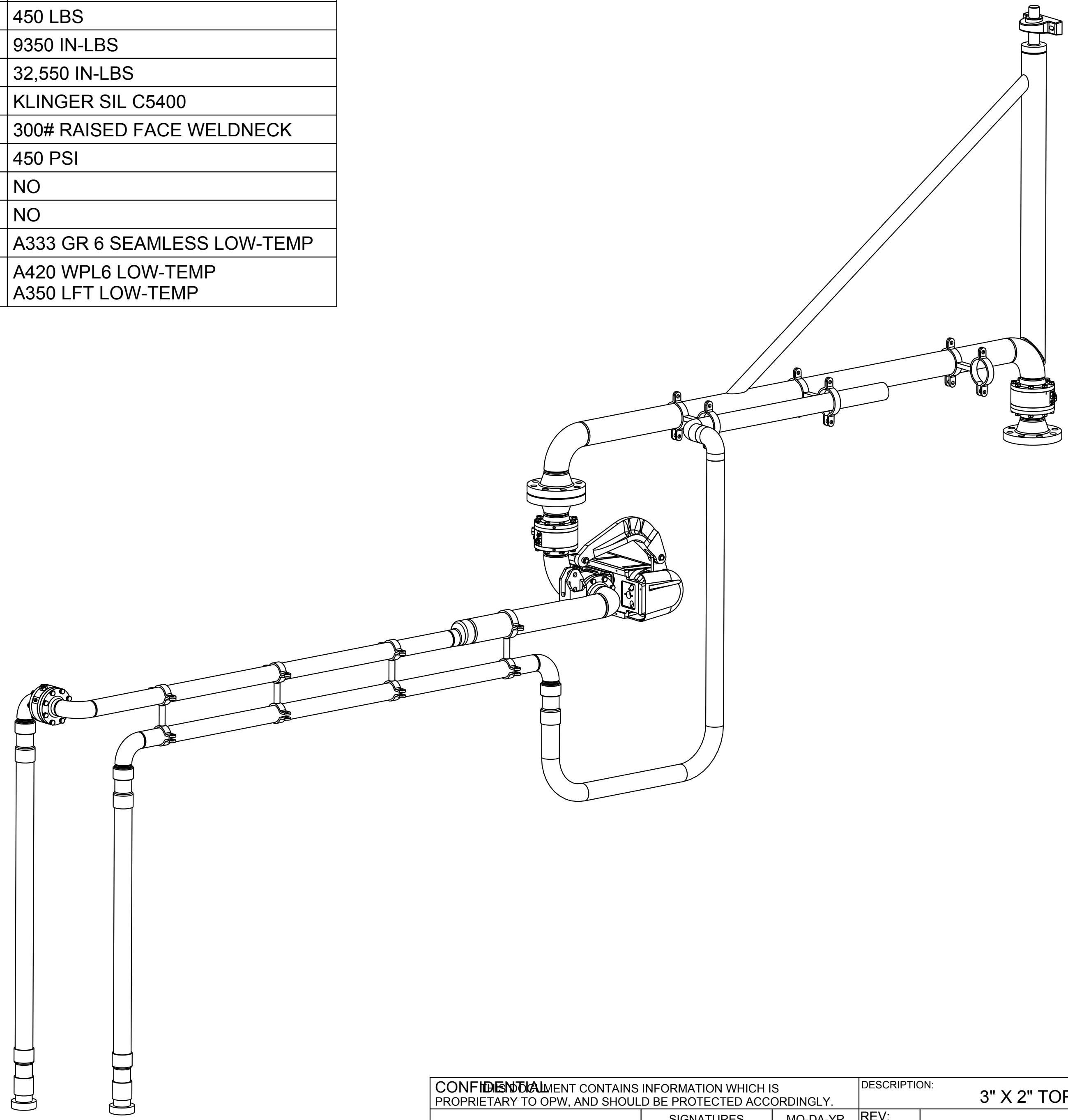


|                           |   |
|---------------------------|---|
| MATERIALS OF CONSTRUCTION | LOW-TEMP CARBON STEEL                   |
| SWIVEL JOINT SEALS        | LOW-TEMP BUNA                           |
| PRODUCT                   | Y-GRADE HYDROCARBON                     |
| ESTIMATED WEIGHT          | 450 LBS                                 |
| 1 MOMENT LOAD AT SPRING   | 9350 IN-LBS                             |
| MOMENT LOAD AT INLET      | 32,550 IN-LBS                           |
| FLANGE GASKETS            | KLINGER SIL C5400                       |
| FLANGED CONNECTIONS       | 300# RAISED FACE WELDNECK               |
| TEST PRESSURE             | 450 PSI                                 |
| PRODUCT RETENTION         | NO                                      |
| WEIGHT BY OTHERS          | NO                                      |
| FLOW PASSAGE PIPE         | A333 GR 6 SEAMLESS LOW-TEMP             |
| 2 PIPE FITTINGS           | A420 WPL6 LOW-TEMP<br>A350 LFT LOW-TEMP |

THIS DRAWING IS NOT TO BE SCALED. FOR ADDITIONAL INFORMATION, PLEASE CONTACT OUR ENGINEERING DEPT.

| REVISIONS |       |             |       |          |      |
|-----------|-------|-------------|-------|----------|------|
| LTR       | ECN # | DESCRIPTION | DRAWN | APPROVED | DATE |
| -         | -     | -           | -     | -        | -    |



~~CONFIDENTIAL~~ THIS DOCUMENT CONTAINS INFORMATION WHICH IS PROPRIETARY TO OPW, AND SHOULD BE PROTECTED ACCORDINGLY.

DESCRIPTION: 3" X 2" TOP LOADING ARM, DFLH

|            |         |          |
|------------|---------|----------|
| SIGNATURES |         | MO-DA-YR |
| DRAWN:     | BJB     | 11/2/10  |
| CHECKED:   | -       | -        |
| MATERIAL:  | WEIGHT: |          |

|              |                   |
|--------------|-------------------|
| REV:         | -                 |
| SIZE:        | D                 |
| PART NUMBER: | <b>EB33F-J330</b> |
| SCALE:       | 0.090             |
| SHEET        | 1 OF 8            |

**OPW** *Engineered Systems*  
 Lebanon, Ohio 45036 USA  
 3D GENERATED DRAWING

A

B

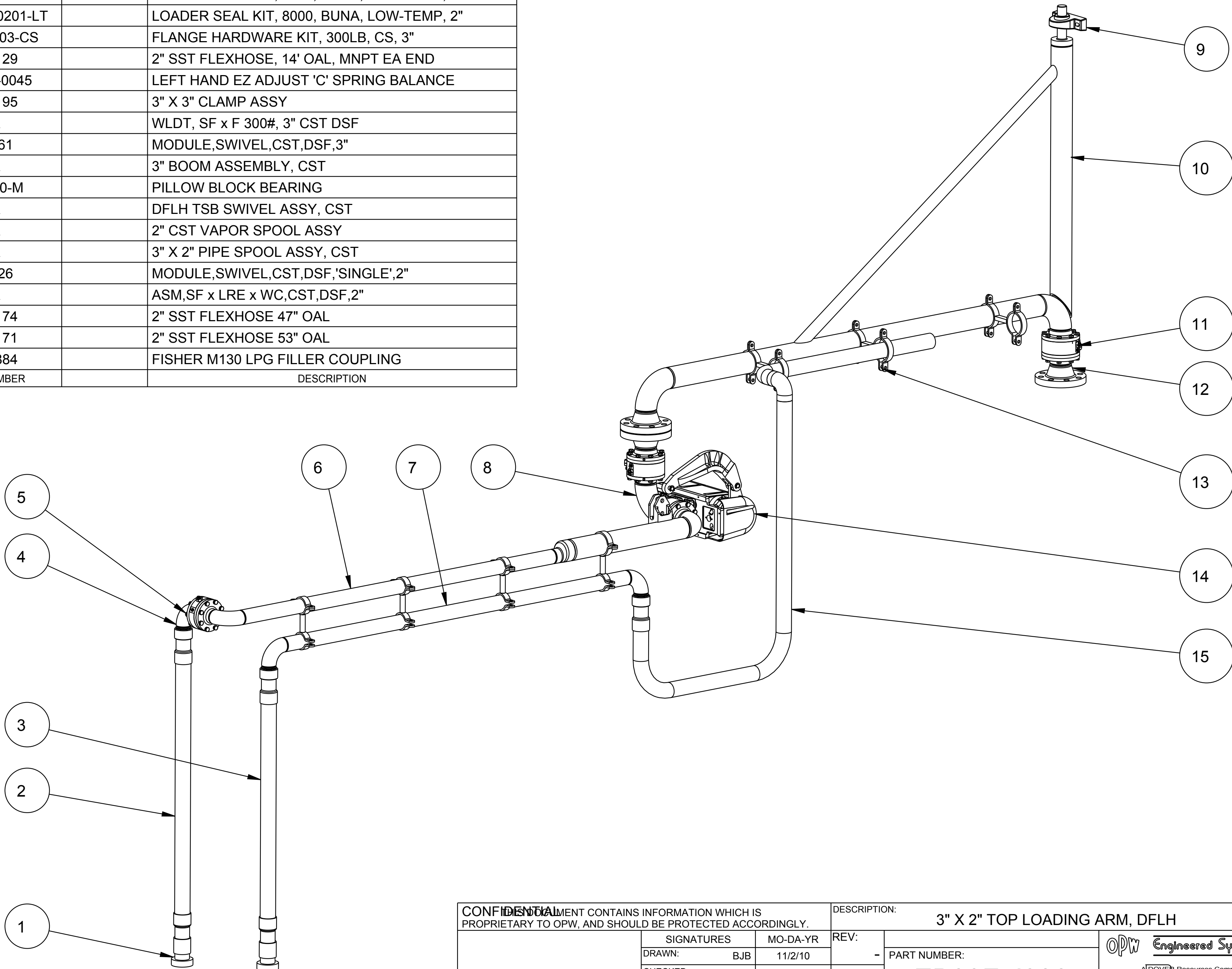
C

D

E

THIS DRAWING IS NOT TO BE SCALED. FOR ADDITIONAL INFORMATION, PLEASE CONTACT OUR ENGINEERING DEPT.

|      |     |    |                  |  |   |
|------|-----|----|------------------|--|---|
| 21   | 1   | EA | H31782PA         |  | RADIOGRAPHIC INSPECTION REQUIRED, 5%      |
| 20   | 1   | EA | LADOC-STD        |  | LOADING ARM, NAME TAG AND HARDWARE        |
| 19   | 3   | EA | LSK-8000-0301-LT |  | LOADER SEAL KIT, 8000, BUNA, LOW-TEMP, 3" |
| 18   | 1   | EA | LSK-8000-0201-LT |  | LOADER SEAL KIT, 8000, BUNA, LOW-TEMP, 2" |
| 16   | 1   | EA | FHK-300-03-CS    |  | FLANGE HARDWARE KIT, 300LB, CS, 3"        |
| 15   | 1   | EA | HX99129          |  | 2" SST FLEXHOSE, 14' OAL, MNPT EA END     |
| 14   | 1   | EA | 790CLH-0045      |  | LEFT HAND EZ ADJUST 'C' SPRING BALANCE    |
| 13   | 3   | EA | HX80195          |  | 3" X 3" CLAMP ASSY                        |
| 12   | 2   | EA | N/A              |  | WLDT, SF x F 300#, 3" CST DSF             |
| 11   | 3   | EA | C20561           |  | MODULE, SWIVEL, CST, DSF, 3"              |
| 10   | 1   | EA | N/A              |  | 3" BOOM ASSEMBLY, CST                     |
| 9    | 1   | EA | H-01180-M        |  | PILLOW BLOCK BEARING                      |
| 8    | 1   | EA | N/A              |  | DFLH TSB SWIVEL ASSY, CST                 |
| 7    | 1   | EA | N/A              |  | 2" CST VAPOR SPOOL ASSY                   |
| 6    | 1   | EA | N/A              |  | 3" X 2" PIPE SPOOL ASSY, CST              |
| 5    | 1   | EA | C21226           |  | MODULE, SWIVEL, CST, DSF, 'SINGLE', 2"    |
| 4    | 1   | EA | N/A              |  | ASM, SF x LRE x WC, CST, DSF, 2"          |
| 3    | 1   | EA | HX99174          |  | 2" SST FLEXHOSE 47" OAL                   |
| 2    | 1   | EA | HX99171          |  | 2" SST FLEXHOSE 53" OAL                   |
| 1    | 2   | EA | HX78884          |  | FISHER M130 LPG FILLER COUPLING           |
| ITEM | QTY | UM | PART NUMBER      |  | DESCRIPTION                               |



|   |  |  |  |
|---|--|--|--|
| <p><b>CONFIDENTIAL</b> - THIS DOCUMENT CONTAINS INFORMATION WHICH IS PROPRIETARY TO OPW, AND SHOULD BE PROTECTED ACCORDINGLY.</p> |  | <p>DESCRIPTION: <b>3" X 2" TOP LOADING ARM, DFLH</b></p> |  |
| SIGNATURES  |  | MO-DA-YR   | REV:   |
| DRAWN: BJB  |  | 11/2/10  | -  |
| CHECKED: -  |  | -  | SIZE: D  |
| MATERIAL:   |  | WEIGHT:  | PART NUMBER: <b>EB33F-J330</b>   |
|   |  |  | SCALE: 0.090 SHEET 2 OF 8  |
|   |  |  | <b>Engineered Systems</b><br>Lebanon, Ohio 45036 USA<br>3D GENERATED DRAWING |

A

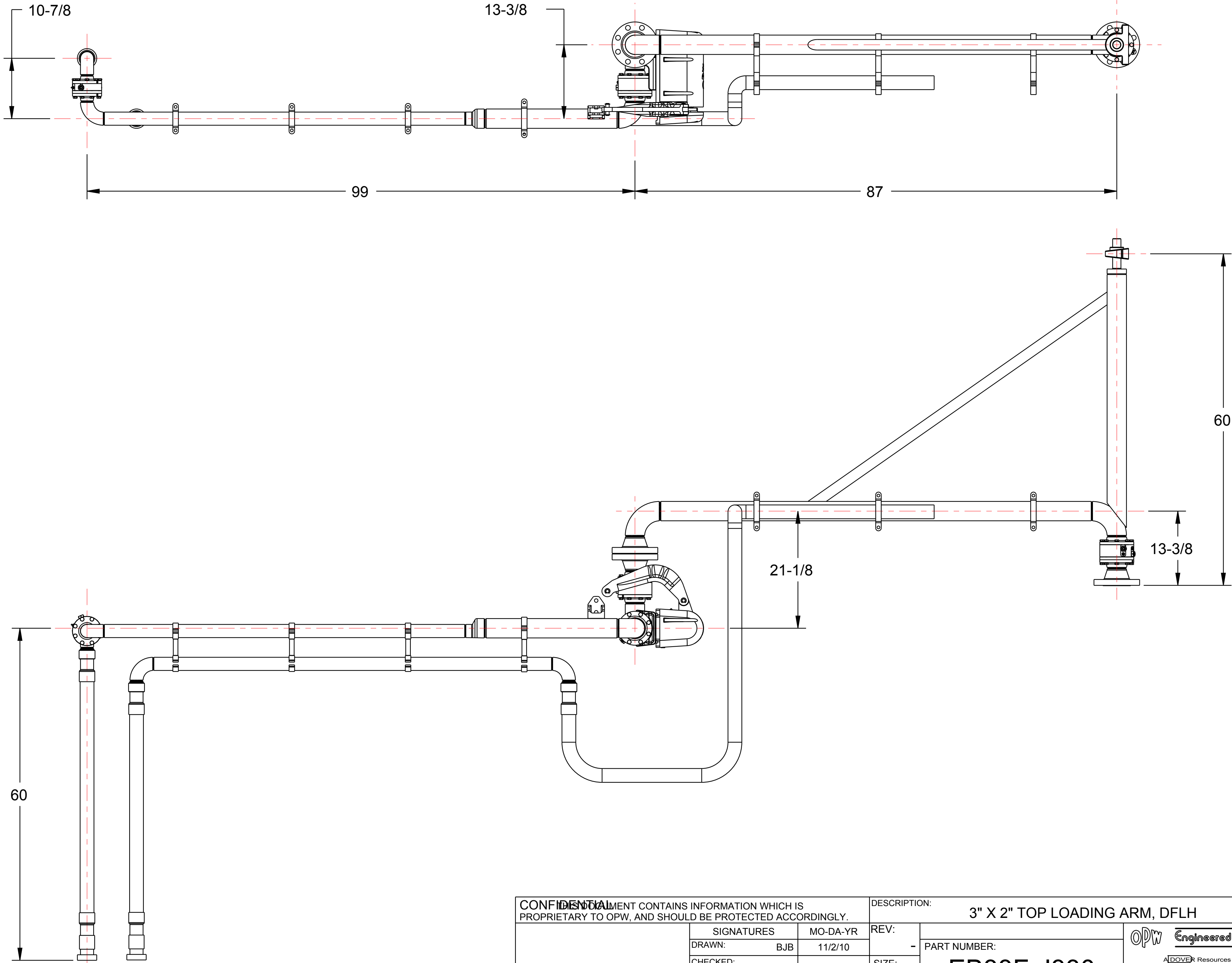
B

C

D

E

THIS DRAWING IS NOT TO BE SCALED. FOR ADDITIONAL INFORMATION, PLEASE CONTACT OUR ENGINEERING DEPT.



**CONFIDENTIAL** THIS DOCUMENT CONTAINS INFORMATION WHICH IS PROPRIETARY TO OPW, AND SHOULD BE PROTECTED ACCORDINGLY.

DESCRIPTION: **3" X 2" TOP LOADING ARM, DFLH**

|            |         |          |
|------------|---------|----------|
| SIGNATURES |         | MO-DA-YR |
| DRAWN: BJB |         | 11/2/10  |
| CHECKED: - |         | -        |
| MATERIAL:  | WEIGHT: | -        |

|                |                   |
|----------------|-------------------|
| REV: -         | PART NUMBER:      |
| SIZE: <b>D</b> | <b>EB33F-J330</b> |
| SCALE: 0.085   | SHEET 3 OF 8      |

**OPW Engineered Systems**  
 Lebanon, Ohio 45036 USA  
 3D GENERATED DRAWING

A

B

C

D

E

1

2

3

4

5

1

2

3

4

5