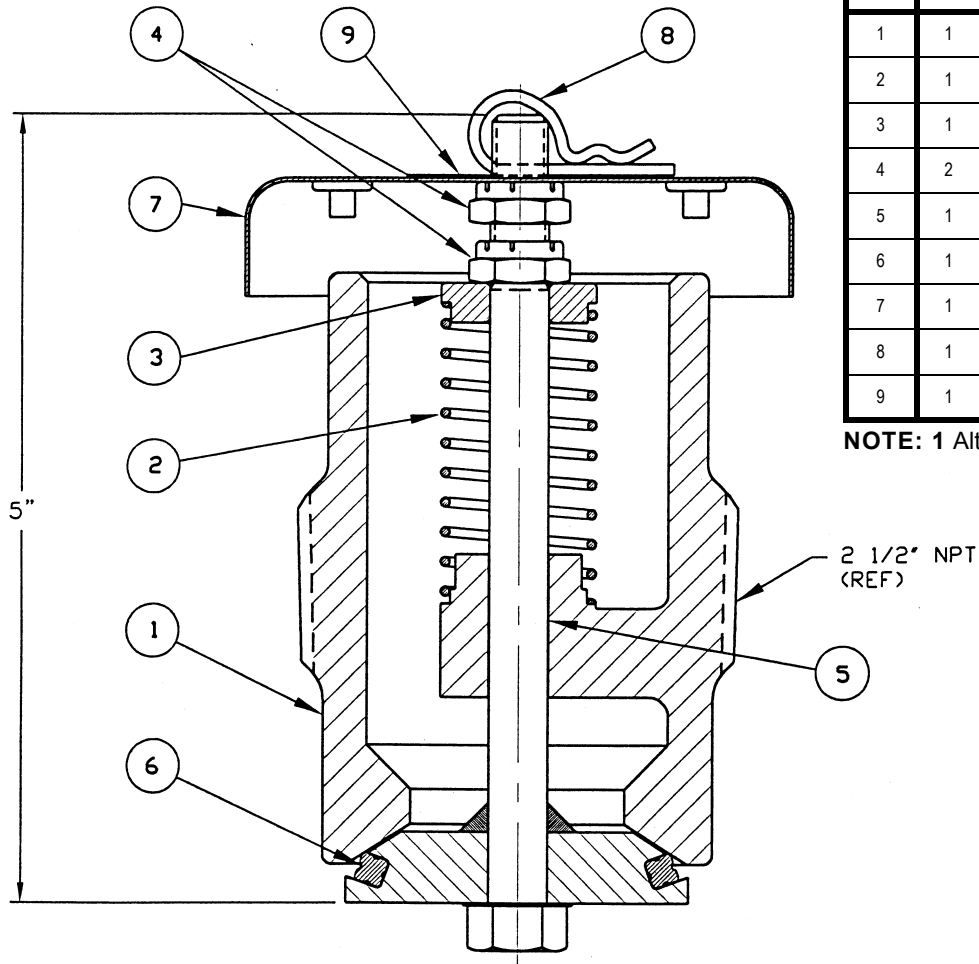


ITEM NO.	QTY.	PART NAME	A-208-WH		A-209-WH		A-209-WH-MO	
			MATERIAL	PART NO.	MATERIAL	PART NO.	MATERIAL	PART NO.
1	1	BODY	STEEL	208-1-CS	STAINLESS	209-1-SS	STAINLESS	209-1-MO
2	1	SPRING	STAINLESS	205-23-MO	STAINLESS	205-23-MO	STAINLESS	205-23-MO
3	1	SPRING SEAT	STAINLESS	207-3-SS	STAINLESS	207-3-SS	STAINLESS	207-3-SS
4	2	LOCK NUT	STEEL	205-4-CS	STAINLESS	207-4-SS	STAINLESS	207-41-SS
5	1	STEM	STAINLESS	207-51-SS	STAINLESS	207-51-SS	STAINLESS	207-51-MO
6	1	PRESSURE SEAL	BUNA-N ⁽¹⁾	205-6-BN	BUNA-N ⁽¹⁾	205-6-BN	BUNA-N ⁽¹⁾	205-6-BN
7	1	WEATHER CAP	STAINLESS	205-7-SS	STAINLESS	205-7-SS	STAINLESS	205-7-SS
8	1	HAIRPIN COTTER	STAINLESS	217-8-SS	STAINLESS	217-8-SS	STAINLESS	217-8-SS
9	1	NAMEPLATE	STAINLESS	209-87-SS	STAINLESS	209-87-SS	STAINLESS	209-87-SS

NOTE: 1 Alternate material available



Standard minimum start to discharge pressure setting is 4.0 PSI vacuum.
Alternate start to discharge pressure settings are available.

Net flow area: 1.12 square inches