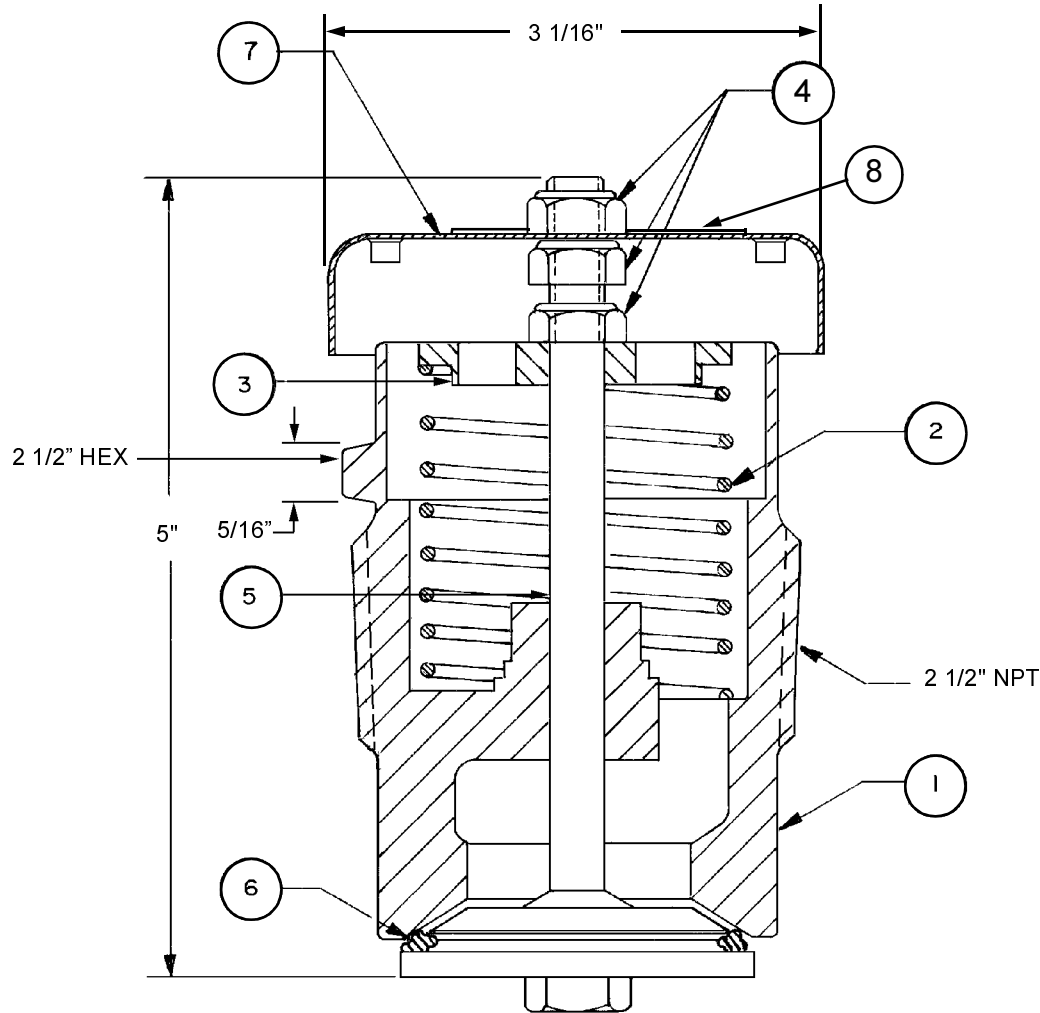


© 2002 Midland Manufacturing Corp.

All designs subject to change without notice. Installation dimensions and mounting arrangements are for general information. Certified drawings are available upon request.

2 1/2" NPT, 10 PSI



ITEM NO.	QTY.	PART NAME	A-208-W-10		A-209-W-10	
			MATERIAL	PART NO.	MATERIAL	PART NO.
1	1	BODY	STEEL	208-11-CS	STAINLESS	209-11-SS
2	1	SPRING	STAINLESS	612-5-SS	STAINLESS	612-5-SS
3	1	SPRING SEAT	STEEL	208-31-CS	STAINLESS	209-31-SS
4	3	LOCK NUT	STEEL	205-4-CS	STAINLESS	207-4-SS
5	1	STEM	STAINLESS	207-5-SS	STAINLESS	207-5-SS
6	1	PRESSURE SEAL	BUNA-N ⁽¹⁾	205-6-BN	BUNA-N ⁽¹⁾	205-6-BN
7	1	WEATHER CAP	STAINLESS	205-7-SS	STAINLESS	205-7-SS
8	1	NAMEPLATE	STAINLESS	209-87-SS	STAINLESS	209-87-SS

NOTE: 1 Alternate material available

Specify 10 PSI setting when ordering.

Net flow area: 1.12 square inches



TO PLACE AN ORDER, OR JUST ASK A QUESTION, CALL (847) 677 - 0333 OR FAX (847) 677 - 0138

REVISION 4.0

4/14/00