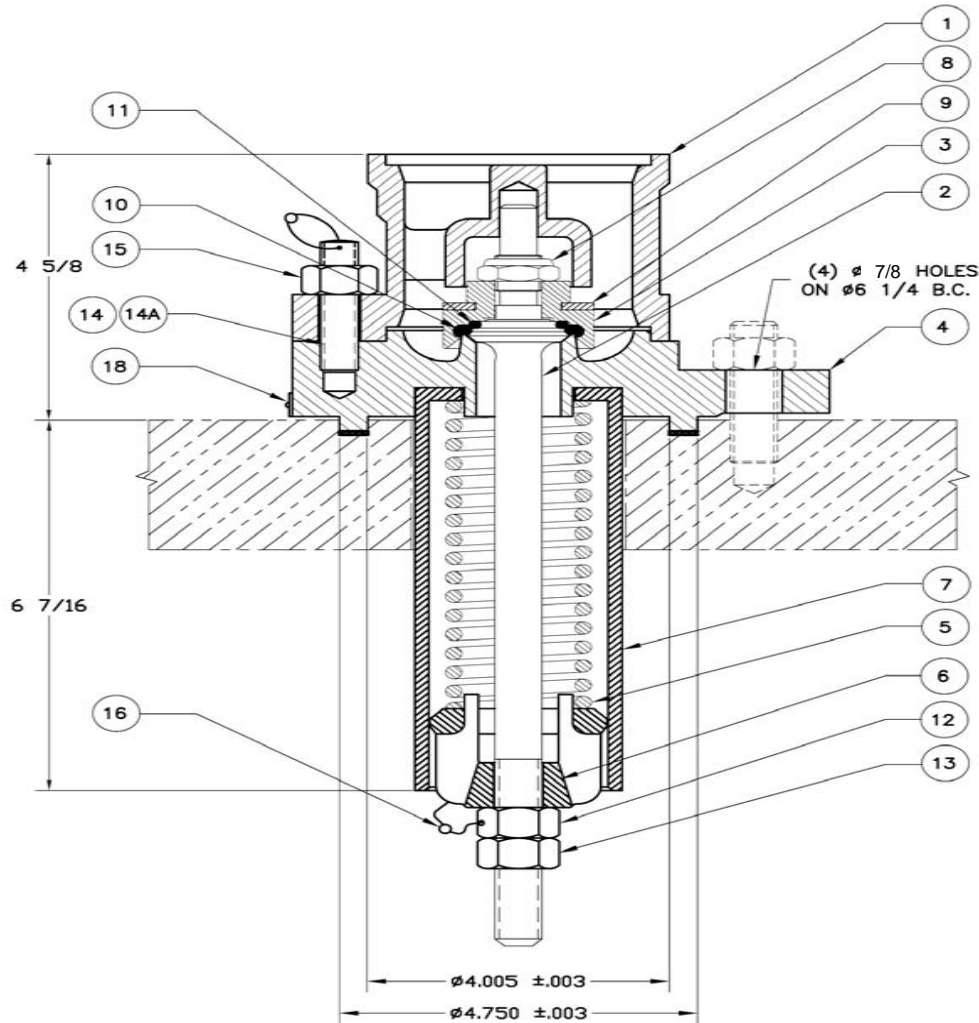


© 2002 Midland Manufacturing Corp.

All designs subject to change without notice. Installation dimensions and mounting arrangements are for general information. Certified drawings are available upon request.



NOTES:

1 FLANGE HOLES: Four 7/8" dia. holes are standard on all valves, except 3/4" dia. holes on A-1035 and A-1039. For 7/8" dia. holes on A-1039 or 3/4" dia. holes on A-1075 through A-1450 use suffix "H". For any other, use suffix "J" and specify.

2 BOLT CIRCLE: 6 1/4" dia. is standard on all valves. For a 6 1/2" dia., use suffix "B". For any other use suffix "C" and specify.

3 MOUNTING: The standard mounting on all valves, except A-1035 and A-1039, is the AAR standard tongue with an O.D. of 4.745"±.003" and an I.D. of 4.005"±.003". For the A-1035 and A-1039, the standard mounting is a flat face flange. If a special tongue of 4.995" x 4.255" is desired, use suffix "M". If a flat face flange is desired for any valve (other than A-1035 and A-1039) use suffix "F". For any other mounting, use suffix "P" and specify.

EXAMPLE OF ORDERING FOR SPECIAL REQUIREMENTS:

An A-1150-HBM valve is an A-1150 valve with (4) 3/4" dia. holes on a 6 1/2" dia. bolt circle and a 4.995" x 4.255" tongue.

NET FLOW AREA : 0.687 SQUARE INCHES

WEIGHT OF VALVE 25 LBS.





TO PLACE AN ORDER, OR JUST ASK A QUESTION, CALL (847) 677 - 0333 OR FAX (847) 677 - 0138

REVISION 4.0

7/28/05

ITEM NO.	QTY.	PART NAME	A-1035 Thru A-1450 STAINLESS TRIM		A-1039 Thru A-1379 STAINLESS STEEL	
			MATERIAL	PART NO.	MATERIAL	PART NO.
1	1	TOP GUIDE	STEEL W/SS INSERT	10-1-XS	STAINLESS	10-1-SS
2	1	STEM	STAINLESS	10-2-SS	STAINLESS	10-2-SS
3	1	RETAINER	STEEL, PLATED ⁽⁶⁾	10-3-CS	STAINLESS	10-3-SS
4	1	BODY	STEEL	10-4-CS	STAINLESS	10-4-SS
5	1	SPRING	ALLOY STEEL, PLATED ⁽⁷⁾	SEE TABLE	STAINLESS	SEE TABLE
6	1	FOLLOWER	STEEL, PLATED ⁽⁶⁾	10-6-CS	STAINLESS	10-6-SS
7	1	SPRING GUIDE	STEEL, PLATED ⁽⁶⁾	10-7-CS	STAINLESS	10-7-SS
8	1	TOP LOCK NUT	STEEL, PLATED ⁽⁶⁾	10-8-CS	STAINLESS	10-8-SS
9	1	WASHER	NEOPRENE	10-9-NE	NEOPRENE	10-9-NE
10	1	SEAT "O" RING	BUNA-N ⁽⁴⁾	10-10-BN	BUNA-N ⁽⁴⁾	10-10-BN
11	1	STEM "O" RING	BUNA-N ⁽⁴⁾	10-11-BN	BUNA-N ⁽⁴⁾	10-11-BN
12	1	ADJUSTMENT NUT	STEEL, PLATED ⁽⁶⁾	10-12-CS	STAINLESS	10-12-SS
13	1	LOCK NUT	STEEL, PLATED ⁽⁶⁾	10-13-CS	STAINLESS	10-13-SS
14	2	STUD	ALLOY STEEL, PLATED ⁽⁶⁾	10-14-AS	STAINLESS	10-14-SS
14A	2	STUD W/HOLE	ALLOY STEEL, PLATED ⁽⁶⁾	10-141-AS	STAINLESS	10-141-SS
15	4	NUT	STEEL, PLATED ⁽⁶⁾	10-15-CS	STAINLESS	10-15-SS
16	2	WIRE SEAL	SS/LEAD	10-16-PB	SS/LEAD	10-16-PB
17						
18	1	NAMEPLATE	STAINLESS	SEE TABLE	STAINLESS	SEE TABLE

NOTES: 4 Alternate material available. 5 For valve with stack see A-1000-S series.
 6 Standard plating is zinc or cadmium. Plating on parts can be changed or eliminated per customer's specifications.
 7 Standard plating is zinc with dichromate. For aluminum coated spring, specify AS/AL. For stainless steel spring, specify SS.

NET FLOW AREA : 0.687 SQUARE INCHES
WEIGHT OF VALVE : 25 LBS.

VALVE P/N	A-1035 Thru A-1450 STAINLESS TRIM			
	PRESSURE SETTING (PSIG)	FLOW RATE (SCFM AIR)	SPRING P/N	NAMEPLATE P/N
A-1035	35	661	10-35-AS	12-35-SS
A-1075	75	1109	10-75-AS	12-75-SS
A-1100	100	1374	10-100-AS	12-100-SS
A-1150	150	2004	10-150-AS	12-150-SS
A-1165	165	2329	10-150-AS	12-165-SS
A-1225	225	2884	10-225-AS	12-225-SS
A-1247	247.5	3070	10-225-AS	12-247-SS
A-1255	255	3477	10-225-AS	12-255-SS
A-1280	280.5	3576	10-300-AS	12-280-SS
A-1300	300	3516	10-300-AS	12-300-SS
A-1330	330	4322	10-300-AS	12-330-SS
A-1375	375	4220	10-375-AS	12-375-SS
A-1450	450	4705	10-450-AS	12-450-SS

VALVE P/N	A-1039 Thru A-1379 STAINLESS STEEL			
	PRESSURE SETTING (PSIG)	FLOW RATE (SCFM AIR)	SPRING P/N	NAMEPLATE P/N
A-1039	35	661	10-39-SS	12-39-SS
A-1079	75	1113	10-79-SS	12-79-SS
A-1104	100	1371	10-104-SS	12-104-SS
A-1154	150	1940	10-154-SS	12-154-SS
A-1169	165	2611	10-165-SS	12-169-SS
A-1229	225	2670	10-229-MO	12-229-SS
A-1251	247.5	3245	10-229-MO	12-251-SS
A-1259	255	3344	10-229-MO	12-255-SS
A-1284	280.5	3697	10-304-SS	12-284-SS
A-1304	300	3695	10-304-SS	12-304-SS
A-1334	330	4262	10-304-SS	12-334-SS
A-1379	375	4615	10-379-SS	12-379-SS

PRESSURE RELIEF VALVES

A-1035 Thru A-1450

© 2002 Midland Manufacturing Corp.
 All designs subject to change without notice. Installation dimensions and mounting arrangements are for general information. Certified drawings are available upon request.