

FL-SERIES GASKET REPLACEMENT INSTRUCTIONS

Multi-ridge Gasket Removal and Replacement

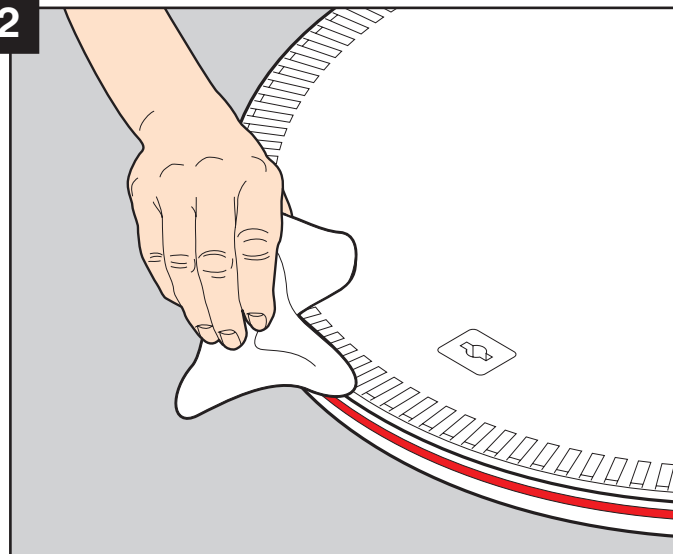


1



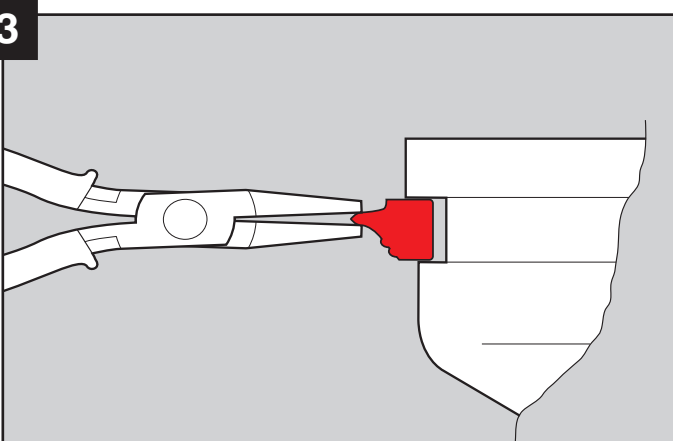
To replace the existing gasket, you will require an FL7A lifting handle, a pair of needle nose pliers and a can of white lithium spray grease. To begin, remove the cover from the frame using the FL7A lifting handle.

2



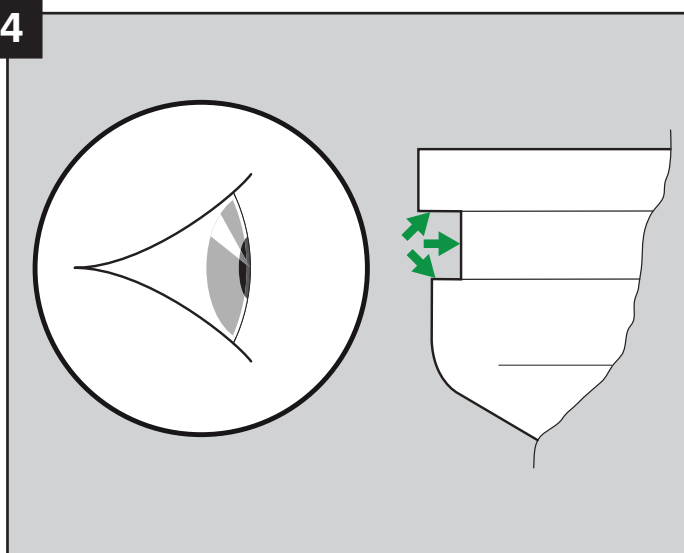
Clean/remove any dirt from the cover and gasket.

3



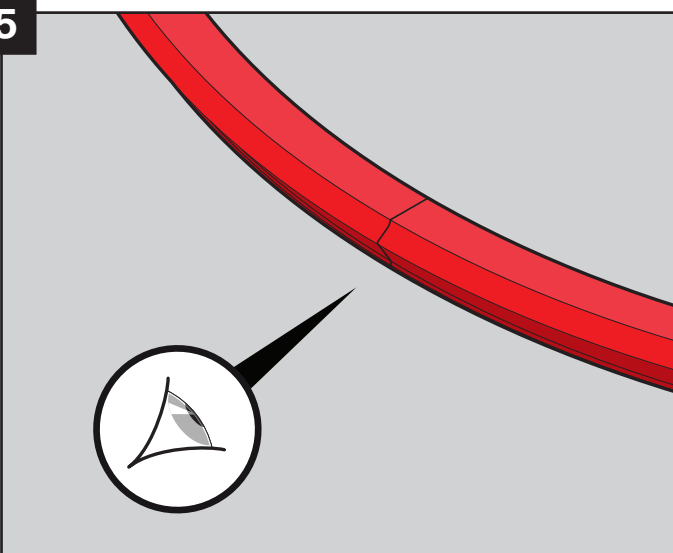
Using a suitable pair of pliers carefully remove the gasket from the cover housing.

4



Ensure that the cover gasket recess is clean and free from any grit and residue.

5



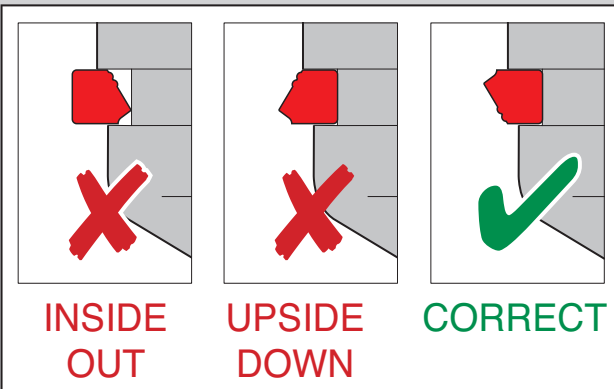
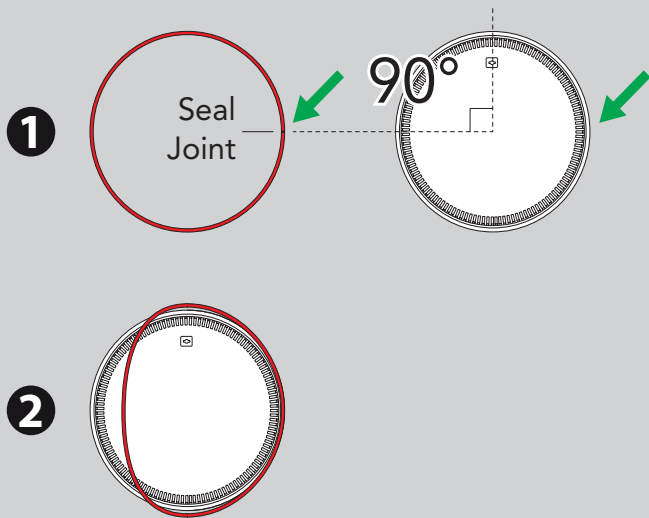
Visually examine the gasket to locate the gasket joint.

FL-SERIES GASKET REPLACEMENT INSTRUCTIONS

Multi-ridge Gasket Removal and Replacement

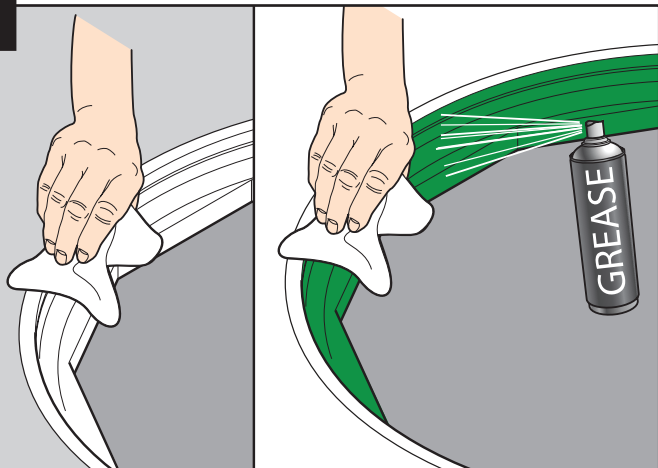


6



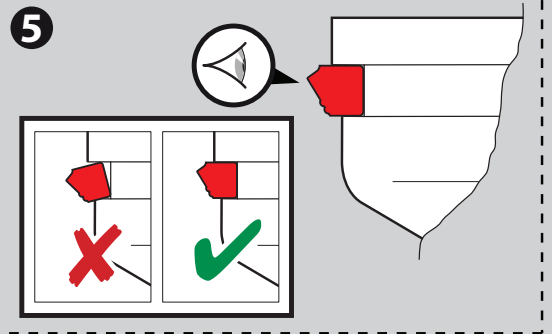
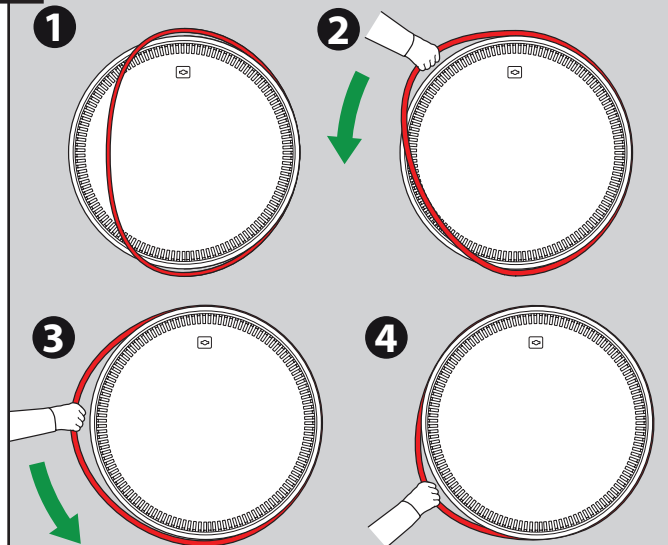
Starting with the gasket joint at 90° to the cover Key Housing, insert the gasket into the cover for approximately 50% of the cover circumference.

8



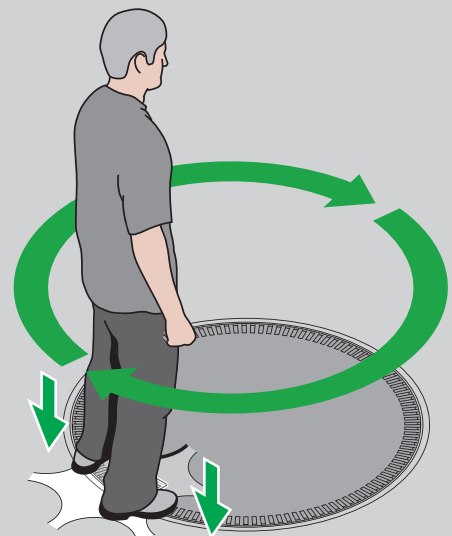
Thoroughly clean the frame. Apply a light film of white lithium spray grease to the upper frame section (where the gasket will mate with the frame) and wipe down to spread evenly.

7



It will be necessary to stretch the remaining length of the gasket for it to fit in the cover recess. Visually check to ensure that the gasket is correctly fitted.

9



Replace cover into frame and step on edges of cover to seat properly – cover should seat easily into frame so that the top edge of the cover is even with the top of the frame. If cover does not seat properly, ensure that frame is free from residue and that the gasket is properly seated in the gasket channel.