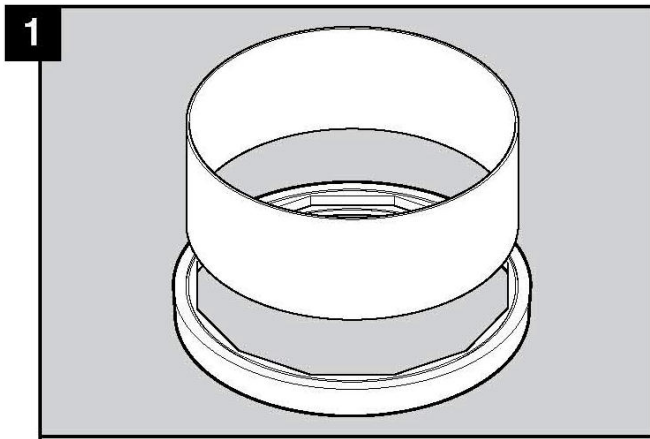
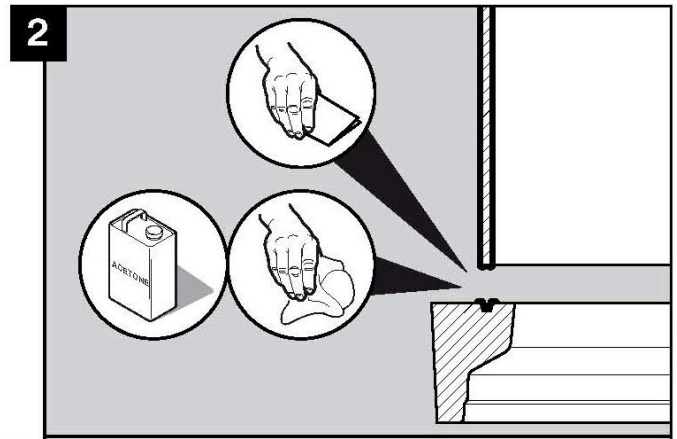


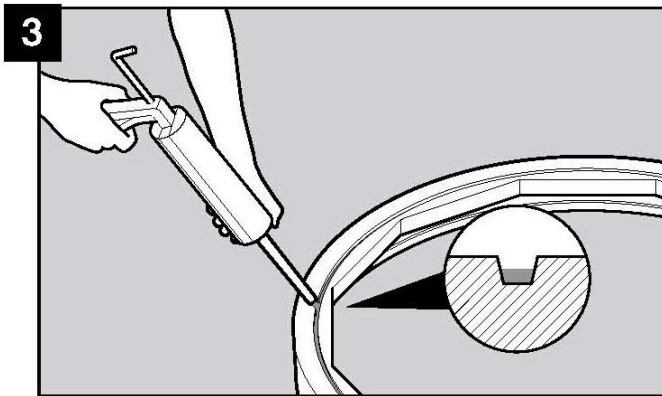
INSTALLATION OF FIBRELITE FL-SERIES SKIRTS



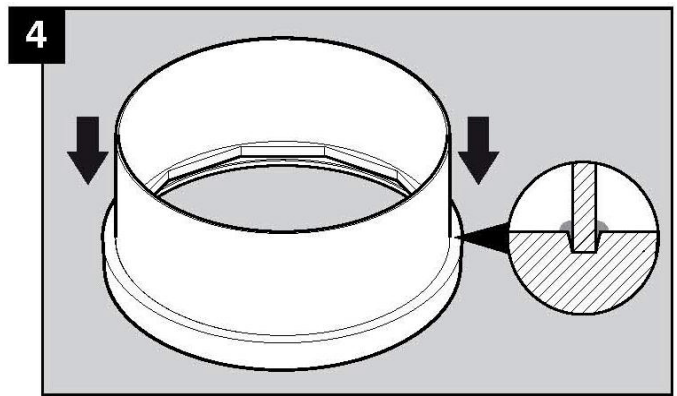
Turn the frame upside down and “dry fit” the skirt into the channel to ensure proper fit. Notify Fibrelite if skirt does not fit properly or another size is needed. Do not bond skirt unless correct.



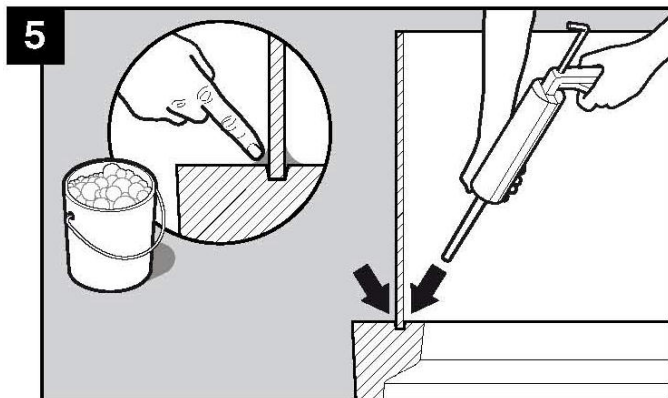
Thoroughly sand the channel and the top edge of the skirt. After sanding, clean both surfaces using acetone to remove any dust or debris that remains in the channel.



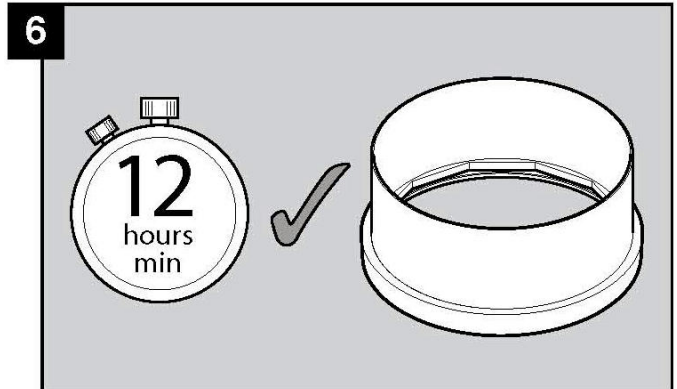
Invert the frame so channel is facing up and apply a continuous bead of adhesive sealant in the frame channel – use Soudaflex, Bostik 1100FS or similar adhesive.



Push the skirt into the frame channel so that it seats into the channel. **Only one side of the skirt will fit the channel – the smaller diameter side of the skirt.**



Apply a bead of adhesive sealant to both the inside and outer edge (as shown) and smooth off with wet finger.



Allow for a minimum 12-hour cure time before proceeding with the frame installation.