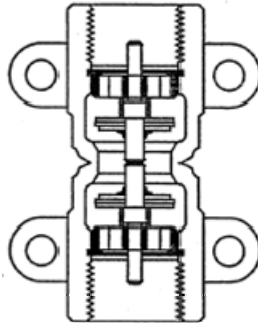


IMPORTANT

Read these assembly and installation instructions completely and carefully prior to starting. Check to make sure all parts have been provided. Use only the parts supplied, substitution of parts may cause product failure.

The OPW 60V-DEF Shear Valve is an emergency breakaway designed for DEF. The valve, intended for installation at the base of the dispenser pedestal, is designed to break at the shear groove in the event of severe impact, helping to minimize the loss of product and damage to underground piping.

Failure to follow these instructions or to provide a rigid mounting to both structures may result in a failure of the valve to break at the shear groove. This may result in a loss of product or damage to underground piping, which could lead to a potentially hazardous condition.



60V-DEF 1" Vapor Valve
(Popped)
Figure 1

WARNING

Proper operation is dependent on proper installation. The following instructions are provided to assist you in properly installing your 60V-DEF Valve. The valve body must be rigidly anchored to a structural member within the island and also to the dispenser to insure breakage at the shear groove in the event of severe impact. Failure to follow these instructions or to provide a rigid mounting to both structures may result in a failure of the valve to break at the shear groove. This may result in a loss of product or damage to underground piping, which could lead to a potentially hazardous condition.

STEP 1

HOW TO ATTACH VALVE TO RISER STUB

Thread valve tightly onto riser stub by grasping inlet end surface "A".

Since the threads used are straight BSPP, there should be no interference and the body will thread on easily until there is contact with the gasket. Once there is contact, half turn to create a sealed surface.

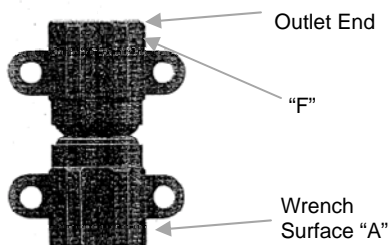


Figure 2

STEP 2

HOW TO ATTACH OUTLET END OF VALVE TO DISPENSER PIPING:

Remove Dirt Protector.

Hold valve steady with one wrench on hex surface "F" (See Figure 2). **Note: If the wrench is turned, the Shear Section will break.**

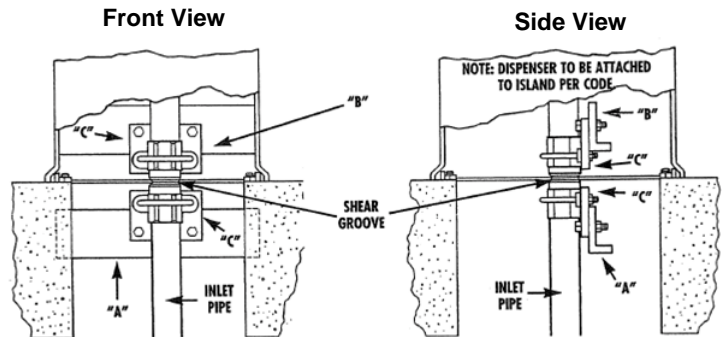
The second wrench is used to tighten the pipe being attached.

Threads are straight BSPP, so pipe should turn easily until contact with the seal. When contact with the seal is made, tighten until sealed.

STEP 3

OPW RECOMMENDED INSTALLATIONS:

The shear groove must be at the same level or a maximum of 1/2" above or below the top of the pedestal island. Failure to install the shear groove at this level may prevent the valve from breaking-off in the event of severe impact, resulting in a hazardous condition.



Angle iron "A" is rigidly supported within the island form by embedding it in concrete. Angle iron "B" is rigidly supported to the pedestal. Short brackets "C" are each bolted to the valve using U-bolt kit 60VK (1002) or bolt and nut kit 60VK (1003). Angle brackets "C" are then bolted to angle brackets "A" and "B" using four (4) 3/8" 16 bolts and nuts to insure the valve and inlet piping are rigid.

OPW STANDARD PRODUCT WARRANTIES

NOTICE: FlexWorks by OPW, Inc., VAPORSAVER™ and all other OPW products must be used in compliance with all applicable federal, state, provincial and local laws, rules and regulations. Product selection must be based on physical specifications and limitations, compatibility with the environment and material to be handled. All illustrations and specifications in this literature are based on the latest production information available at the time of publication. Prices, materials and specifications are subject to change at any time, and models may be discontinued at any time, in either case, without notice or obligation.

OPW warrants solely to its customer that the following products sold by OPW will be free from defects in materials and workmanship under normal use and conditions for the periods indicated:

Product	Warranty Period
FlexWorks Primary Pipe	10 years from date of manufacture
All Products Certified to California 2001 Standards*	1 year from date of manufacture or from date of installation registration (not to exceed 15 months from date of manufacture)
All other Products	1 year from date of manufacture
* Products certified to California 2001 Standards will have an OPW registration card enclosed/attached to the product.	

OPW's exclusive obligation under this limited warranty is, at its option, to repair, replace or issue credit (in an amount not to exceed the list price for any defective product) for future orders for any product that may prove defective within the applicable warranty period (repairs or replacements are subject to prorated warranty coverage for remainder of the original warranty period). Complete and proper warranty claim documentation and proof of purchase required. All warranty claims must be made in writing and delivered during the applicable warranty period to OPW at 9393 Princeton Glendale Rd., Hamilton, Ohio 45011, Attention: Customer Service Manager. No products may be returned to OPW without its prior written authority.

This limited warranty shall not apply to any FlexWorks or VAPORSAVER™ product unless it is installed by an OPW attested installer. This limited warranty also shall not apply to any FlexWorks, VAPORSAVER™ or other OPW product: unless all required site and warranty registration forms are completed and received by OPW within 60 days of installation; unless all piping connections are installed with a nationally-recognized or state-approved leak detection device in each tank and dispenser sump (which are not for storage and from which all discharge hydrocarbons must be removed, and the systems completely cleaned, within 24 hours); unless testable sumps utilize FlexWorks pipe and access fittings; unless a sump inspection log or an EPA recommended/required checklist is maintained and the results are furnished to OPW upon request; and unless OPW is notified within 24 hours of any known or suspected product failure and is provided with unrestricted access to the product and the site. This limited warranty also shall not apply to any product which has been altered in any way, which has been repaired by anyone other than a service representative authorized by OPW, or when failure or defect is due to: improper installation or maintenance (including, without limitation, failure to follow FlexWorks Manuals and Installation Guides and all product warning labels); abuse or misuse; violation of health or safety requirements; use of another manufacturer's, or otherwise unauthorized substances or components; soil or other surface or subsurface conditions; or fire, flood, storm, lightning, earthquake, accident or any other conditions, events or circumstances beyond OPW's control.

THIS LIMITED WARRANTY IS IN LIEU OF ALL OTHER WARRANTIES, EXPRESS OR IMPLIED, AND ALL OTHER WARRANTIES INCLUDING, WITHOUT LIMITATION, THE WARRANTIES OF MERCHANTABILITY AND FITNESS FOR A PARTICULAR PURPOSE, ARE HEREBY EXCLUDED. OPW shall have no other liability whatsoever, whether based on breach of contract, negligence, gross negligence, strict liability or any other claim, including, without limitation, for special, incidental, consequential or exemplary damages or for the cost of labor, freight, excavation, clean-up, downtime, removal, reinstallation, loss of profit, or any other cost or charges. No person or entity is authorized to assume on behalf of OPW any liability beyond this limited warranty. This limited warranty is not assignable.



OPW Fueling Containment Systems
 3250 US 70 Business West
 Smithfield, NC 27577
 Customer Service: 1-(800) 422-2525



Notice: OPW-FCS products must be used in compliance with applicable federal, state, provincial and local laws and regulations. Product selection should be based on physical specifications and limitations and compatibility with the environment and material to be handled. OPW-FCS makes no warranty of fitness for a particular use. All illustrations and specifications in this literature are based on the latest production information available at the time of publication. Prices, materials and specifications are subject to change at any time, and models may be discontinued at any time, in either case, without notice or obligation. For complete OPW-FCS warranty information, visit our web site at www.opwglobal.com.