

# 68EZR RECONNECTABLE BREAKAWAY FOR THE 68EZR SERIES

## IMPORTANT SAFEGUARDS:

- For your protection, please read these safety instructions completely before installing and operating this equipment.
- Keep this manual on file for future reference.
- This manual contains material that may be required to be on site at all times to comply with various authorities.
- Carefully observe and adhere to all warnings, precautions and instructions for this equipment.

## WARNINGS:



Failure to comply with the following warnings could result in property damage, injury or death.

- Dispensing system must be tested to determine if a separation force of 350 pounds would damage it.



- Dispenser must be securely attached to the dispensing island.
- Keep gasoline / fuel away from your eyes and skin.
- Keep gasoline / fuel out of reach of children
- Do not use power tools (Class I Division I and Class I Division II) during installation process and maintenance of equipment.
- **CHEMICAL EXPOSURE HAZARD:** Always wear appropriate safety equipment during installation or maintenance of equipment.
- **FIRE HAZARD:** Do not install an unlisted ad/billboard or other unlisted after-market device on any breakaway. Doing so may interfere with proper operation of the breakaway. Breakaway may not separate properly, causing a fuel spill, property damage, injury or death. Reference: sensitivity test per Underwriters Laboratories specification UL842.

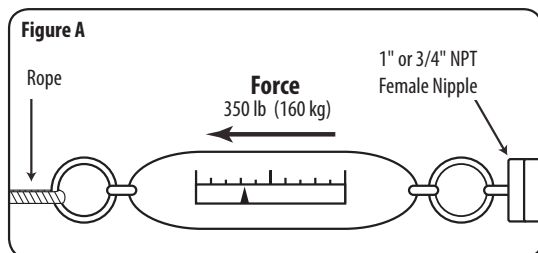
## INSTALLATION

The OPW 68EZR is manufactured to properly function up to a disengagement force of 350 lb (160 kg). Per U.L. requirements, after installation of the new OPW 68EZR, it must be tested to verify that a pull force of 350 pounds will not damage the hose assembly or dispensing device (See **Figure A** for test). The dispensing device must be securely bolted to the dispensing island.

Valve should be installed according to the directional “flow-arrows” located on the wrench-flats.

### PULL FORCE TEST: (SEE FIGURE A)

Attach a spring scale to the location where the breakaway will be installed. Apply a 350 lb (160 kg) pull force at various angles and check the emergency valves, dispenser and hose assembly.



Although the valve can be installed with flow in either direction, it is very important that the OPW 68EZR be installed according to the directional “flow-arrows” located on the wrench-flats of the inlet and discharge ports of the OPW 68EZR breakaway bodies. This is suggested for ease of reconnection and weather protection. Dispensers with high hanging-hose and low-hose applications are also suitable for this method.

### SIDE HOSE CONNECTION: (SEE FIGURE B)

Install the OPW 68EZR downstream of the hose retractor clamp. Install a 9” (230 mm) minimum length hose or OPW 66H-0075 between OPW 68EZR and nozzle. Total length of hoses and breakaway valve is not to exceed local, state or federal codes.

### OVERHEAD HOSE CONNECTION: (SEE FIGURE C)

Install the OPW 68EZR with a 9” (230 mm) minimum length hose or OPW 66H-0075 onto dispenser as shown. Install hose between OPW 68EZR and nozzle. Total length of hoses and breakaway valve is not to exceed local, state or federal codes. If dispenser is equipped with a hose retractor, install the OPW 68EZR downstream of the hose retractor clamp.

## IMPORTANT

- Use wrench on wrench-flats to attach breakaway to the hose.
- DO NOT use wrench or clamp on the upstream cover to install the breakaway.
- DO NOT use the upstream cover to thread breakaway on the hose. Doing so may interfere with proper operation of the breakaway.
- DO NOT use thread or Teflon® tape. Use U.L. recognized pipe sealant on threaded connections.

## IMPORTANT SAFEGUARDS

Some residual pressure may be present on the dispenser side of the separated breakaway—use caution when reconnecting the breakaway. A small amount of fuel may leak out of the breakaway during reconnection if the required reconnection steps are not followed. To prevent the occurrence of this, follow the reconnection instruction guidelines and procedures, along with proper alignment of breakaway halves below.

# STEPS FOR RECONNECTION

## AFTER A SEPARATION HAS OCCURRED:

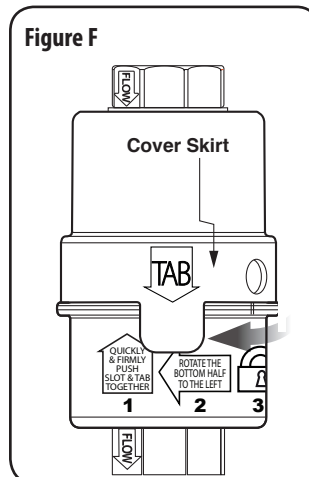
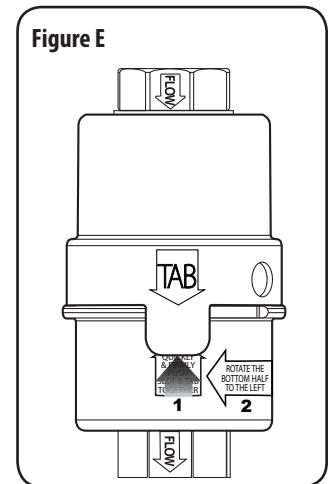
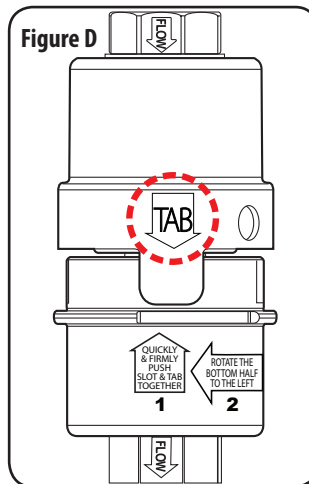
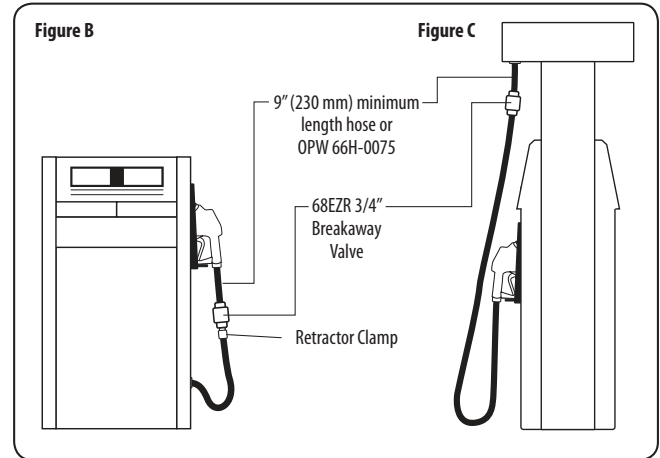
### Breakaway Reconnection Procedure:

- 1) Verify the dispenser is not authorized/activated.
- 2) Implement all applicable safety measures to prevent accidental discharge of fuel such as removing power for the dispenser, closing the emergency shear valve, etc. Implement proper Lock Out Tag Out (LOTO) procedures as needed.
- 3) Inspect the entire dispensing system including piping, emergency valves, hoses, nozzles, swivels and the OPW 68EZR breakaway for any damage or noticeable leaking. Replace any damaged components in the system.
- 4) Clean and lubricate the seal and valve halves with light oil or silicone grease.
- 5) **PLEASE NOTE:** For easier reconnection, be sure to relieve any pressure in the separated hose length by opening the nozzle and draining a small amount of fuel into an approved container.
- 6) Without the upper and lower halves of the breakaway touching, align the “Tab” label on the upper valve cover with the arrow pointing to the slot in the lower valve cover. **(Figure D)**

**Note:** Perform steps 7 and 7a simultaneously

- 7) Once aligned, QUICKLY and FIRMLY push the bottom half up toward the top half of the breakaway. **(Figure E)**
- 7a) Holding the top half of the valve tightly, rotate the bottom half approximately 30 degrees to the left until a click is heard. **(Figure F)**
- 8) Once the “click” is heard and the “green” indicator appears in the round hole in the cover’s skirt, a positive lock completes reconnection. **(Figure G)**

Your OPW 68EZR is now reconnected. Pressurize the dispensing system and check for leakage as described in step 3. If the system was not damaged and a proper reconnection has been made, you may resume normal operation of the dispensing unit. However, should leakage occur, or if there is doubt about a proper connection made, remove the unit from service and call your local maintenance company.



**THIS MANUAL MUST BE LEFT WITH FACILITY MANAGEMENT**

**OPW STANDARD PRODUCT WARRANTY / OPW TERMS & POLICIES**

Notice: FlexWorks by OPW, Inc., VAPORSAVER™ and all other OPW products must be used in compliance with all applicable federal, state, provincial and local laws, rules and regulations. Product selection is the sole responsibility of the customer and/or its agents and must be based on physical specifications and limitations, compatibility with the environment and material to be handled. All illustrations and specifications in this literature are based on the latest production information available at the time of publication. Prices, materials and specifications are subject to change at any time, and models may be discontinued at any time, in either case, without notice or obligation.

OPW warrants solely to its customer that the following products sold by OPW will be free from defects in materials and workmanship under normal use and conditions for the periods indicated:

Product	Warranty Period
FlexWorks Primary Pipe	10 years from date of manufacture
All Products Certified to California 2001 Standards*	1 year from date of manufacture or from date of installation registration (not to exceed 15 months from date of manufacture)
All Other Products	1 year from date of manufacture
*Products certified to California 2001 Standards will have an OPW registration card enclosed/attached to the product.	

OPW's exclusive obligation under this limited warranty is, at its option, to repair, replace or issue credit (in an amount not to exceed the list price for the product) for future orders for any product that may prove defective within the applicable warranty period (repairs or replacements are subject to prorated warranty coverage for remainder of the original warranty period). Complete and proper warranty claim documentation and proof of purchase required. All warranty claims must be made in writing and delivered during the applicable warranty period to OPW at OPW 9393 Princeton-Glendale Road Hamilton, Ohio, USA 45011, Attention: Customer Service Manager. No products may be returned to OPW without its prior written authority.

This limited warranty shall not apply to any FlexWorks or VAPORSAVER™ product unless it is installed by an OPW attested installer. This limited warranty also shall not apply to any FlexWorks, VAPORSAVER™ or other OPW product: unless all required site and warranty registration forms are completed and received by OPW within 60 days of installation; unless all piping connections are installed with a nationally-recognized or state-approved leak detection device in each tank and dispenser sump (which are not for storage and from which all discharge hydrocarbons must be removed, and the systems completely cleaned, within 24 hours); unless testable sumps utilize FlexWorks pipe and access fittings; unless a sump inspection log or an EPA recommended/required checklist is maintained and the results are furnished to OPW upon request; and unless OPW is notified within 24 hours of any known or suspected product failure and is provided with unrestricted access to the product and the site. This limited warranty also shall not apply to any product which has been altered in any way, which has been repaired by anyone other than a service representative authorized by OPW, or when failure or defect is due to: improper installation or maintenance (including, without limitation, failure to follow FlexWorks Quick Reference Manual Installation Guide and all product warning labels); abuse or misuse; violation of health or safety requirements; use of another manufacturer's, or otherwise unauthorized, substances or components; soil or other surface or subsurface conditions; or fire, flood, storm, lightning, earthquake, accident or any other conditions, events or circumstances beyond OPW's control.

THIS LIMITED WARRANTY IS IN LIEU OF ALL OTHER WARRANTIES, EXPRESS OR IMPLIED, AND ALL OTHER WARRANTIES INCLUDING, WITHOUT LIMITATION, THE WARRANTIES OF MERCHANTABILITY AND FITNESS FOR A PARTICULAR PURPOSE, ARE HEREBY EXCLUDED. OPW shall have no other liability whatsoever, whether based on breach of contract, negligence, gross negligence, strict liability or any other claim, including, without limitation, for special, incidental, consequential or exemplary damages or for the cost of labor, freight, excavation, clean-up, downtime, removal, reinstallation, loss of profit, or any other cost or charges. No person or entity is authorized to assume on behalf of OPW any liability beyond this limited warranty. This limited warranty is not assignable.

<b>SITE NAME:</b>	
<b>ADDRESS:</b>	
<b>BREAKAWAY SERIAL NUMBER:</b>	
<b>DATE OF INSTALLATION:</b>	
<b>CONTRACTOR IN CHARGE OF THE FACILITY:</b>	