

Installation Instructions

H-11487-PA
JULY, 1991
REV. A, 4-02

OPW 66-CL Coaxial Breakaway Installation Instructions

Caution

The OPW 66-CL has a maximum disengagement force of 250 pounds. It shall be determined that such pull force will not damage the hose assembly or dispensing device (Figure A for test set-up). Dispensing device must be securely bolted to the dispensing island.

Pull Force Test

Attach a spring scale to the location where the breakaway will be installed. Apply a 250 pound pull force at various angles and check the EMERGENCY VALVES, DISPENSER and HOSE ASSEMBLY. Release the load and complete the installation.

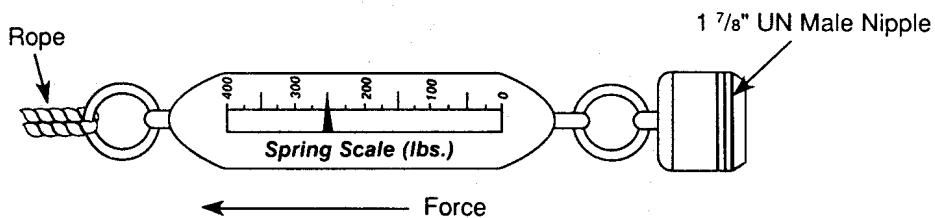


Figure A

Installation

The OPW 66-CL is to be installed between two pieces of coaxial hose. On dispensers with fueling hose retractors, installation of the OPW 66-CL must be between the hose retractor and nozzle. Install as shown in Figure B.* Total length of hoses and breakaway valve is not to exceed local, state, or federal codes.

* with flow in direction of arrow

The OPW 66-CL is designed to be recoupled after a separation. Follow the OPERATION INSTRUCTIONS before reconnecting.

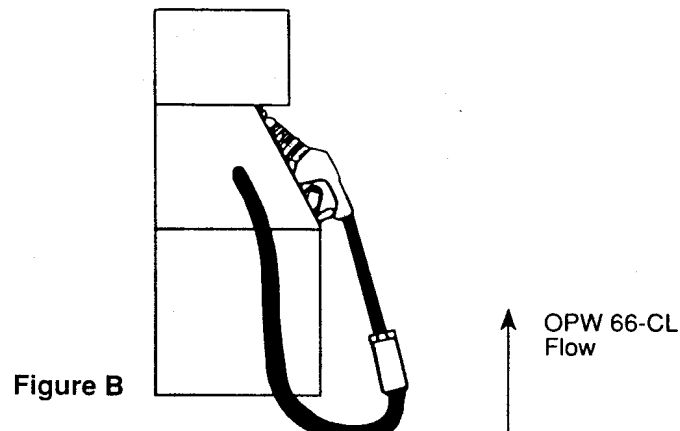
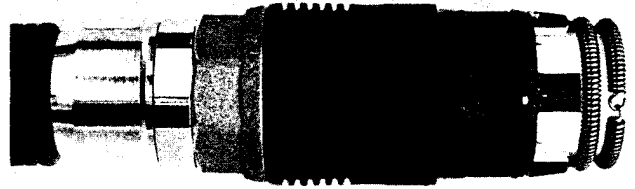
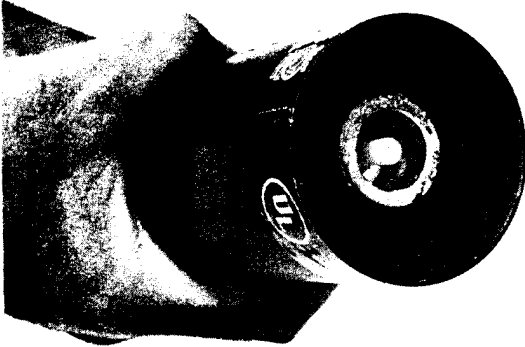


Figure B

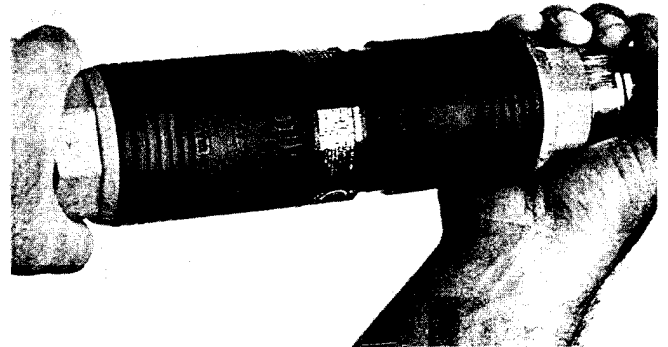
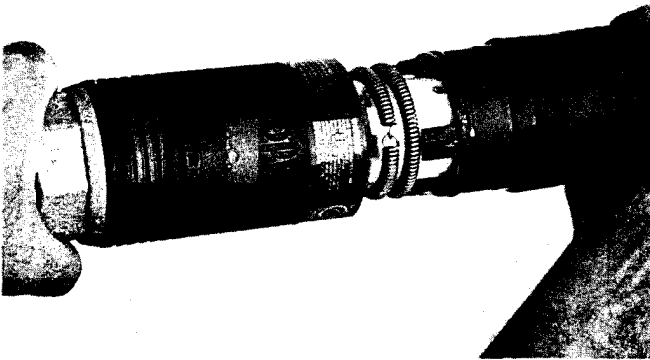
Operation

After separation:

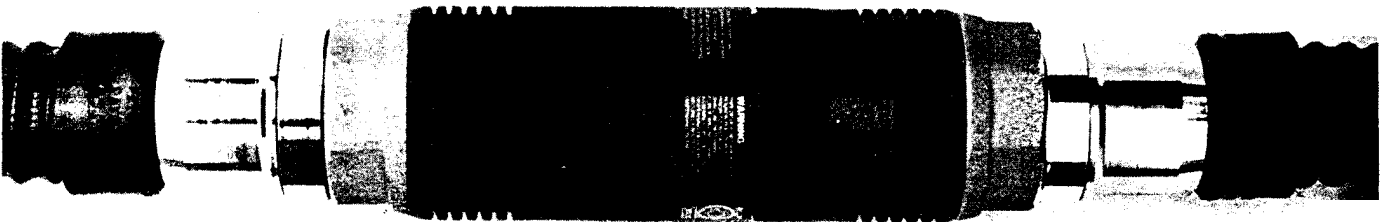
- 1) Turn off dispenser.
- 2) Inspect the entire dispensing system including piping, emergency valves, hoses, nozzles, swivels and the 66-CL breakaway for any damage or noticeable leaking. Replace any damaged parts in the system.
- 3) Clean and lubricate the O-rings and valve halves with light oil or silicone grease. (See Figure 3A and 3B.)



- 4) Push the top and bottom valve halves of the 66-CL firmly together (Figure 4A) Holding the top of the valve half tightly, rotate the bottom half approximately 30 degrees until a click is heard, indicating a positive lock. (Figure 4B.)



- 5) Your OPW 66-CL is now re-installed. Pressurize the dispensing system and check for leakage as in step 2. Your dispensing system is now ready for service.



A DOVER COMPANY

P.O. Box 405003 - Cincinnati, Ohio 45240-5003
(513) 870-3219 - (800) 422-2525 (orders only)
(513) 870-3100 (other calls)

OPW warrants that products sold by it are free from defects in materials and workmanship for a period of one year from the date of manufacture by OPW (ECO products two years from date of manufacture.) Proof of purchase may be required. As the exclusive remedy under this limited warranty, OPW will at its sole discretion, repair, replace, or issue credit for future orders on any product that may prove defective within the one year date of manufacture period (repairs, replacements, or credits may be subject to prorated warranty for remainder of the original warranty period, complete proper warranty claim documentation required.) This warranty shall not apply to any product that has been altered in any way, which has been repaired by any other than a service representative authorized by OPW, or when failure is due to misuse, or improper installation or maintenance. OPW shall have no liability whatsoever for special, incidental, or consequential damages to any party, and shall have no liability for the cost of labor, freight, excavation, clean-up, downtime, removal, reinstallation, loss of profit, or any other cost or charges.

THIS WARRANTY IS IN LIEU OF ALL OTHER WARRANTIES, EXPRESSED OR IMPLIED, AND SPECIFICALLY THE WARRANTIES OF MERCHANTABILITY AND FITNESS FOR A PARTICULAR PURPOSE. THERE ARE NO WARRANTIES WHICH EXTEND BEYOND THE DESCRIPTION ON THE FACE HEREOF.