



OPW Installation and Maintenance Instructions

OPW 301 Series Above Ground Storage Tank Emergency Vent

IMPORTANT: Please read these warnings and use the assembly instructions completely and carefully before starting. Failure to do so may cause product failure, or result in environmental contamination due to liquid leakage into the soil, creating hazardous spill conditions.

IMPORTANT: The OPW 301 Series Emergency Vent is pre-assembled for your convenience and ease of installation. Check to make sure the unit is intact and undamaged and all parts have been supplied. Never substitute parts for those supplied. Doing so may cause product failure.

WARNING-DANGER: Using electrically operated equipment near gasoline or gasoline vapors may result in a fire or explosion, causing personal injury and property damage. Be sure that the working area is free from such hazards, and always use proper precautions.

NOTE: At all times when product is in the storage tank keep the riser pipe capped, so the vapors cannot escape into the environment.

Notice: OPW products must be used in compliance with applicable federal, state, and local laws and regulations. Product selection should be based on physical specifications and limitations and compatibility with the environment and material to be handled. All illustrations and specifications in this literature are based on the latest production information available at the time of publication. Prices, materials, and specification are subject to change at any time, and models may be discontinued at any time, in either case, without notice or obligation.

Standard Product Warranty

OPW warrants that products sold by it are free from defects in materials and workmanship for a period of one year from the date of manufacture by OPW (ECO products two years from date of manufacture.) Proof of purchase may be required. As the exclusive remedy under this limited warranty, OPW, will at its sole discretion, repair, replace, or issue credit for future orders for any product that may prove defective within the one year date of manufacture period (repairs, replacements, or credits may be subject to prorated warranty for remainder of the original warranty period, complete proper warranty claim documentation required.) This warranty shall not apply to any product that has been altered in any way, which has been repaired by any party other than a service representative authorized by OPW, or when failure is due to misuse, or improper installation or maintenance. OPW shall have no liability whatsoever for special, incidental or consequential damages to any party, and shall have no liability for the cost of labor, freight, excavation, clean up, downtime, removal, reinstallation, loss of profit, or any other cost or charges.

For any product certified to California 2001 standards, OPW warrants that product sold by it are free from defects in material and workmanship for a period of one year from date of manufacture or one year from date of registration of installation not to exceed 15 months from date of manufacture by OPW.

THIS WARRANTY IS IN LIEU OF ALL OTHER WARRANTIES, EXPRESS OR IMPLIED, AND SPECIFICALLY THE WARRANTIES OF MERCHANTABILITY AND FITNESS FOR A PARTICULAR PURPOSE. THERE ARE NO WARRANTIES, WHICH EXTEND BEYOND THE DESCRIPTION ON THE FACE HEREOF.

OPW 301 Series Emergency Vent (PATENT PENDING)

Torque Specifications:
125 ft-lbs minimum to 250 ft-lbs maximum

Tools Recommended:
Pipe Wrench or Strap Wrench

For flange models, OPW recommends the use of flange gaskets that are certified to meet the listed specifications: MIL-G-12803A/B/C, ASTM F 104 or ASTM D2000.

Bolt torque values for ASME B 16.5 Class 150#

Nom. Pipe Size (Inches)	No. of Bolts	Size of Bolts (Inches)	Minimum Torque (ft.-lbs)	Preferred Torque (ft.-lbs.)
8	8	0.75	115	200
10	12	0.88	125	320

**OPW 301 SERIES EMERGENCY VENT
INSTALLATION INSTRUCTIONS:****Step 1:**

Apply pipe dope to pipe threads. Pipe dope to be a non-hardening, gasoline resistant pipe thread seal compound.

Note: Do not use Teflon tape.

Step 2:

Thread the OPW 301 Series Emergency Vent onto the pipe nipple. Tighten using a pipe wrench or strap wrench.

Step 3:

Check to be sure the lid raises and lowers once installation has been completed. Make sure the seal is completely seated in the machined groove in the body.

Operation and Maintenance:

Periodic maintenance is required for all OPW 301 Emergency Vents. If the vent has been activated, inspect the seal for damage or debris and clean the seal and sealing area. The lid should be raised and lowered once a year to assure no binding or obstruction. Inspect the seal for damage or debris and clean the seal and sealing area.

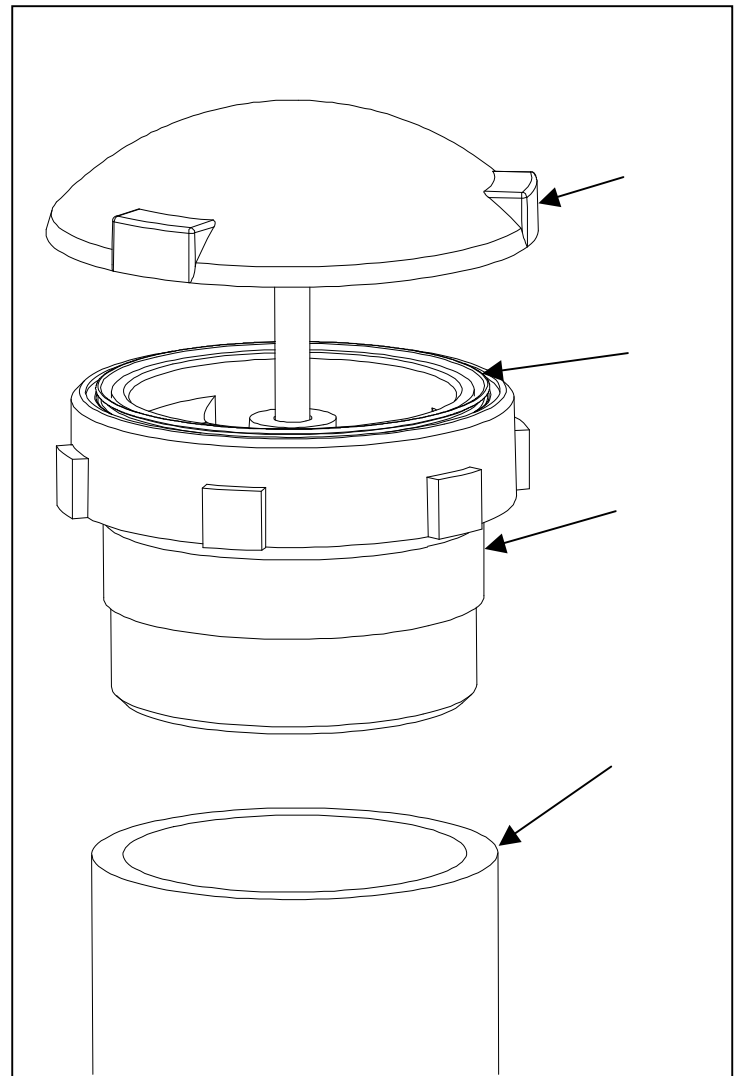


Figure 1



9393 Princeton Glendale Road, Hamilton, OH 45011
1-800-422-2525 Domestically
513-870-3315 Internationally
www.opw-fc.com

Copyright, 2009 - OPW Fueling Components Inc. Hamilton, OH
Printed in U.S.A. p/n 203568 – 05/09