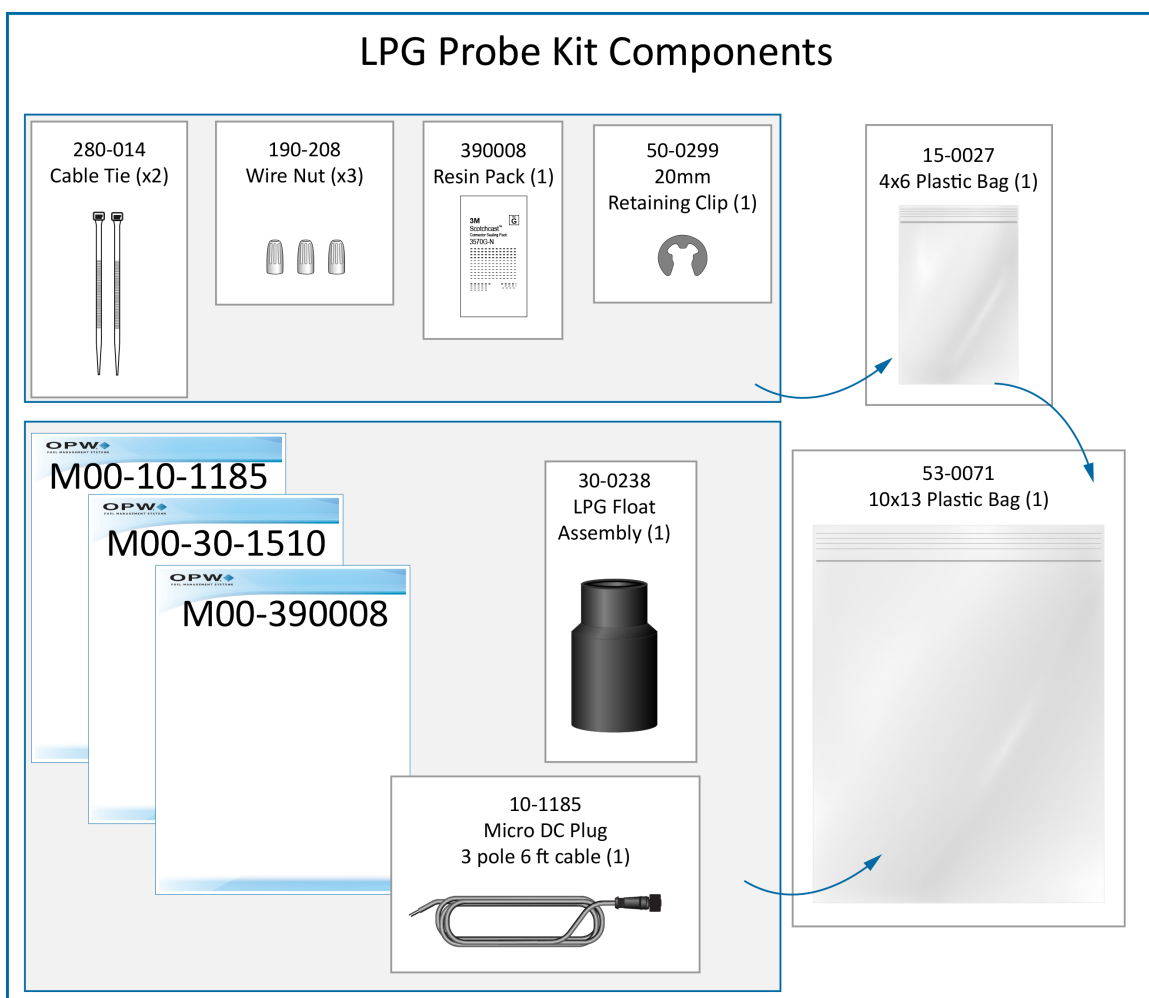


M00-30-1510 LPG Probe Installation

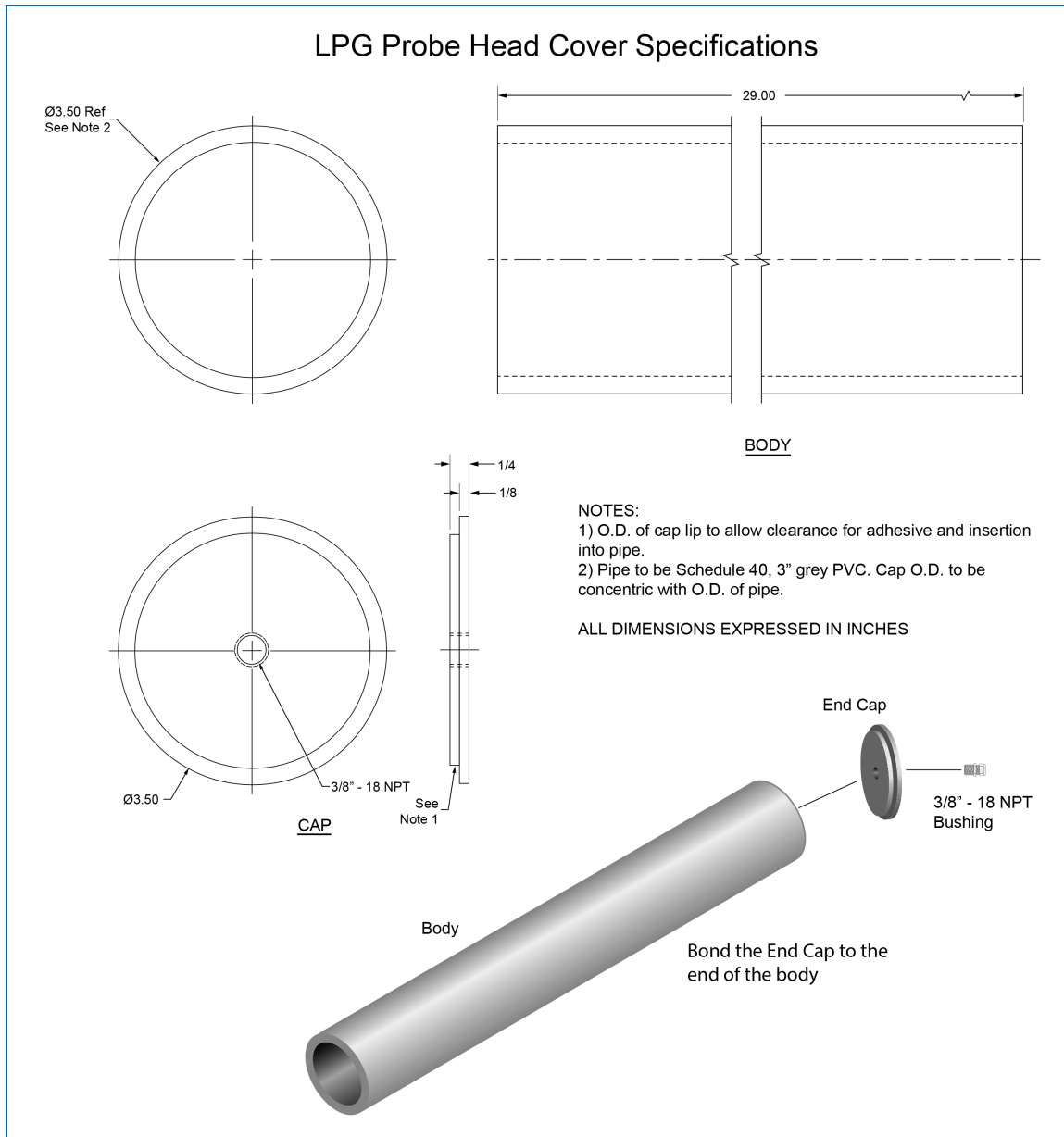
Components:

- LPG Probe Kit (P/N 30-1510) - See image below for components included in the kit. Make sure all of the components shown are included.
- LPG Probe Head Cover and Bushing (not supplied) - See specifications and assembly instructions for a Probe Head Cover below.
- LPF Flange and Sheath assembly. This should be supplied by the tank manufacturer. The sheath material should be equivalent to 316L austenitic (non-magnetic) stainless steel.



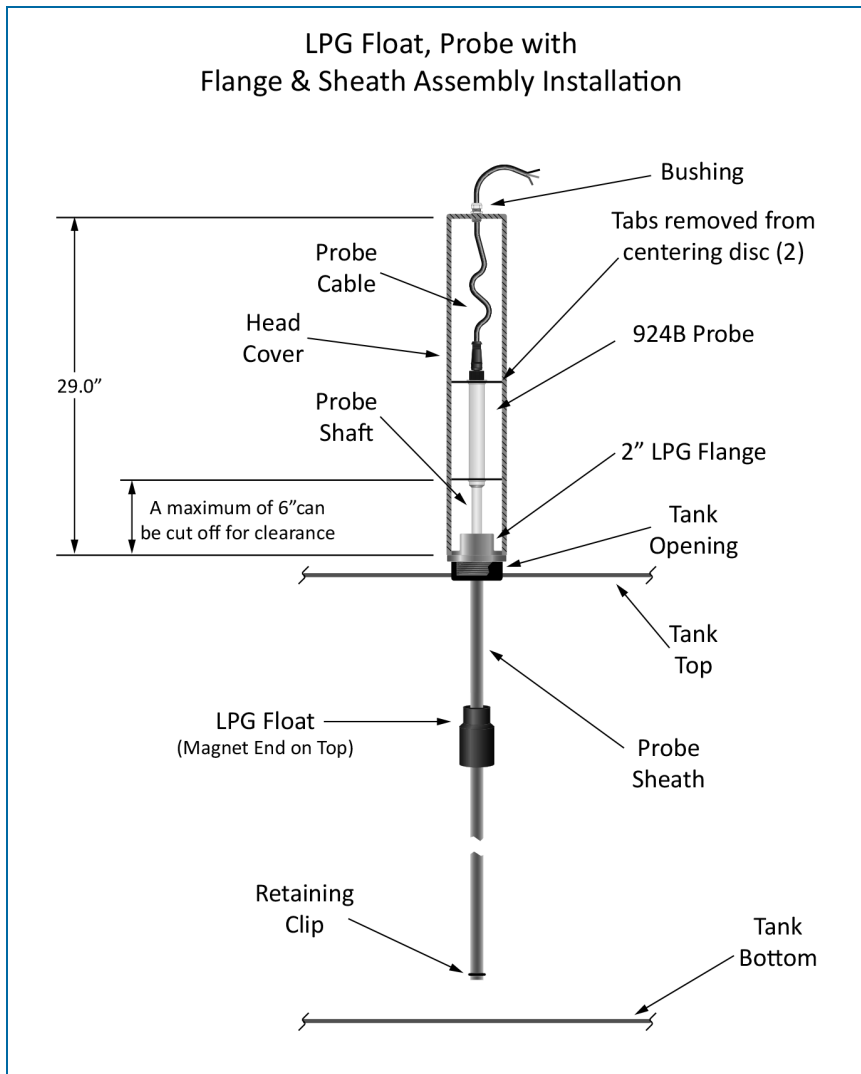
LPG Probe Head Cover (not supplied)

Assemble a PVC probe head cover. See the dimensions and specifications in the drawing below.



It will be necessary to drill and tap a hole in the cap to accommodate a $3/8"$ - 18 NPT Bushing (not supplied).
Bond the Cap to the Body with an applicable PVC adhesive.

Flange/Sheath and Float Installation



1. Slide the Probe Float onto the bottom of the Probe Sheath.



IMPORTANT: The magnet in the float must point to the top of the assembly.

2. Place the Retaining Clip into the slot on the bottom of the probe sheath shaft.



NOTICE: To prevent damage to the assembly, two (2) people are required for the next step in the procedure.



3. With another person to help, lift and carefully put the assembly into the threaded tank opening.



NOTICE: Do not cause damage to the float! Be careful when the float is near the threads in the tank opening to prevent scrapes or cuts in the float body.



IMPORTANT: You must obey all local regulations and the tank manufacturer's recommendations when doing the last steps in this procedure.

4. Apply a sealant (not included) approved for LPG use, to the threads of the flange.
5. Tighten the flange to the LPG tank opening to make a good seal.

Prepare the Probe

1. Snap off the tabs of both the top and bottom centering disks at the inner score marks.



NOTE: The steps that follow are applicable only when it is necessary to convert a regular 924B probe in the field to an LPG probe. LPG probes purchased from OPW Fuel Management Systems are assembled with shrink tubing.

2. Carefully slide the shrink tubing (contact OPW Fuel Management Systems for order information) over the probe outer shaft. Make sure that it covers the full probe shaft.
3. Cut the tubing. Keep an extra one (1) inch (2.5cm) extended at the bottom of the probe.
4. Carefully heat the shrink tubing using a heat gun or similar approved device until the tubing seals around the probe. Make sure you do not overheat the tubing and cause it to split.



NOTE: When you shrink the tubing at the bottom of the probe, carefully bend the tubing towards the bottom of the probe. This will keep the bottom of the probe covered.

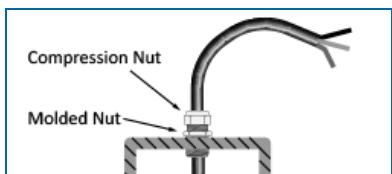
Prepare the LPG Head Cover Assembly



TIP: The head cover can be cut (to a maximum of six [6] inches [15.2cm]) to keep sufficient clearance. Make sure to keep enough space for the cable and connection.

1. Loosen the nut on the 3/8" bushing (not supplied; use HEYCO #3459 or similar). Push the probe cable through the large opening on the bottom of the bushing and through the gasket.
2. Insert the connector end of probe cable into the hole in the top of the head cover.
3. Turn the bushing into the threads of the hole in the top of the head cover.

4. Tighten the bushing with the lower molded nut (not with the top compression nut). See the illustration below.



NOTE: Do not over-tighten the nut! it is not necessary for the bushing to be flush with the top of the head cover.

5. Pull the cable through the bushing so that approximately two (2) inches (5cm) of cable extend from the bottom of the head cover.
6. Tighten the compression nut to seal the fitting to the cable.

Install the Probe into the Sheath Assembly

1. Remove the protective cap from the open end of the flange/sheath assembly.
2. Carefully insert the probe into the sheath opening. Make sure to prevent damage to the shrink tubing.



IMPORTANT: Make sure the probe is completely seated in the bottom of the sheath.

3. Attach the probe cable to the probe. Slide the cover down over the flange until it is fully seated. The cover is held in place by a friction fit with the flange.
4. Make all electrical connections. See the instructions supplied with the probe.